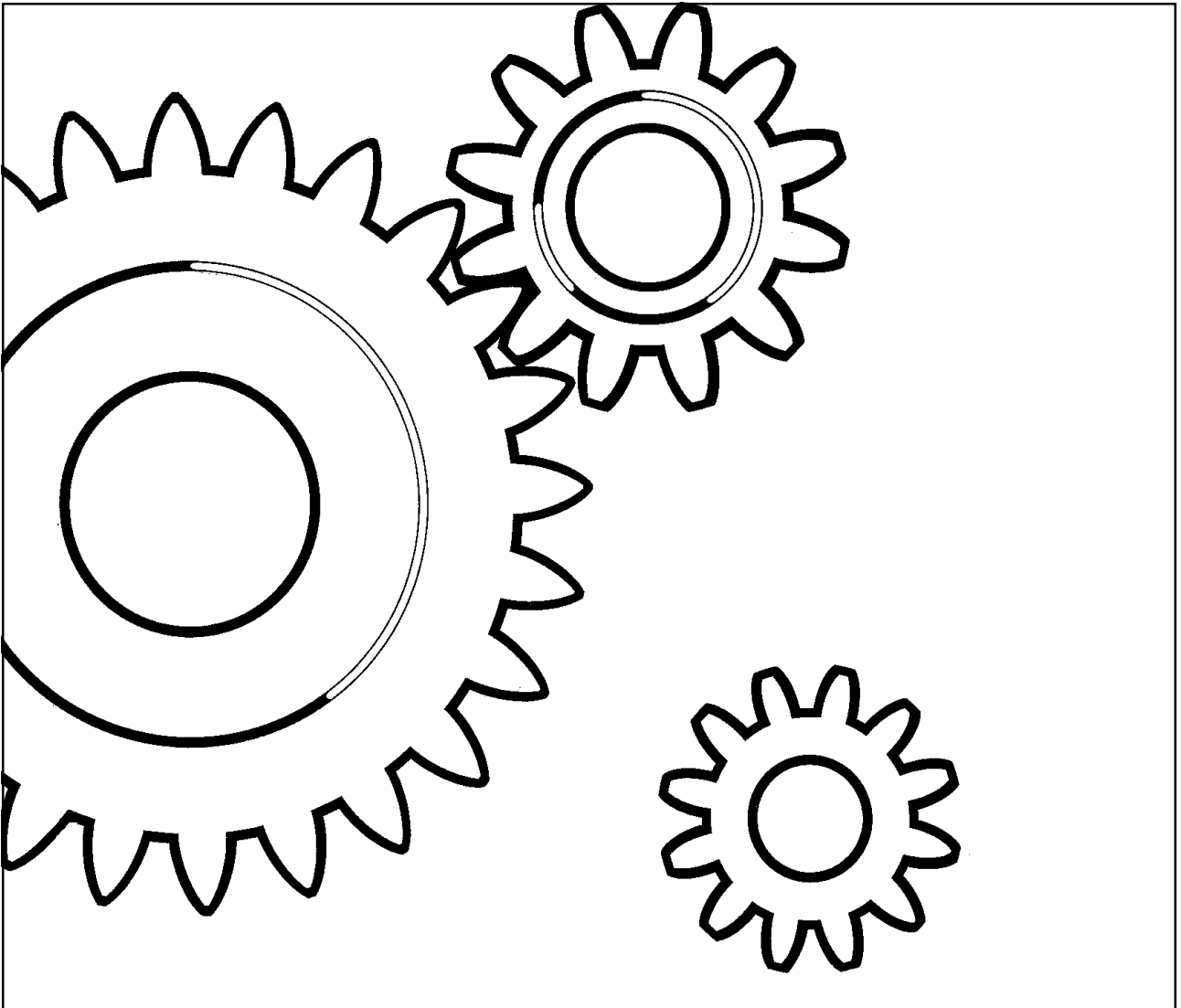


# DYNAPAC LG400 SPARE PARTS CATALOGUE

SLG400-1EN1



***DYNAPAC***

Part of the Atlas Copco Group

Atlas Copco Construction Tools AB

SE-105 23 Stockholm, Sweden



## **Forward/Reverse Vibratory Plate Compactor LG400**

### **Spare Parts Catalogue**

#### **SLG400-1EN1**

*Valid from serial number:*

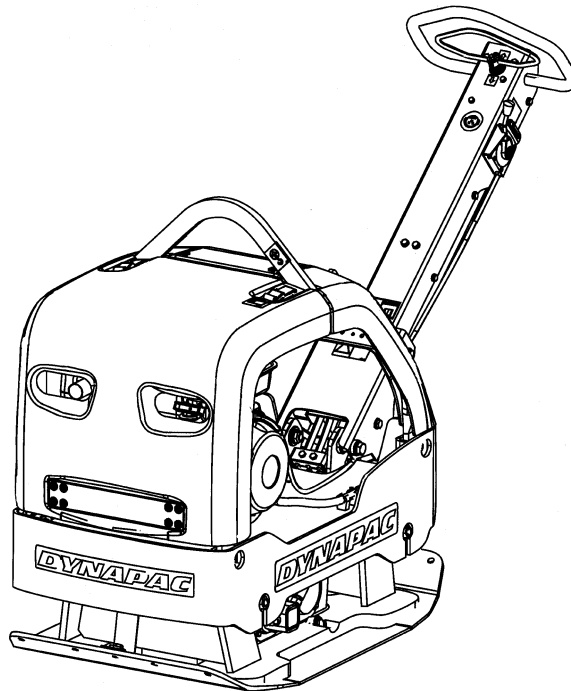
*\*34000001\*-*

*Engines:*

*Honda GX390  
Lombardini 15LD 440*

*Published catalogue issues valid for these plates:*

<i>Catalogue</i>	<i>Issue date</i>	<i>Replaced by</i>
SLG400-1EN1	2009 - 12	



**RESERVDLSBESTÄLLNING**

Följande uppgifter ska lämnas vid beställning av reservdelar för att undvika leveransfel:

1. Maskintyp.
2. Vältens serienummer.
3. Antal av önskad reservdel.
4. Reserdelens artikelnummer.
5. Reservdelens benämning.
6. Måttuppgifter vid beställning av metervara.

**ERSATZTEILBESTELLUNG**

Zur Vermeidung von Fehllieferungen sind bei der Bestellung von Ersatzteilen folgende Angaben zu machen:

1. Maschinentyp.
2. Herstellungsnummer.
3. Bestellmenge. (Quantity)
4. Ersatzteilnummer. (Part N°)
5. Ersatzteilbenennung. (Denomination)
6. Massangaben bei Bestellung von Meterware.

**PEDIDO DE RECAMBIOS**

Para evitar errores en las entregas, deberán indicarse los siguientes datos al hacer un pedido de recambios:

1. Tipo de máquina.
2. Número de serie.
3. Cantidad de piezas deseadas. (Quantity)
4. Número de artículo de la pieza de recambio. (Part N°)
5. Denominación de la pieza. (Denomination)
6. Indíquese la medida al solicitar un artículo que se expide por metros.

**ORDERING SPARE PARTS**

To avoid errors in delivery, please give the following information when ordering spare parts:

1. Type of machine.
2. Roller serial number.
3. Quantity required.
4. Part number.
5. Parts denomination.
6. Dimensions when ordering per length.

**ORDINI DI RICAMBI**

Per evitare errori nelle consegne di ricambi, Vi preghiamo di comunicarci le seguenti informazioni al momento dell'ordinazione:

1. Tipo di macchina.
2. Numero di serie della macchina.
3. Quantità dei pezzi desiderati. (Quantity)
4. Numero di codice del pezzo. (Part N°)
5. Descrizione del pezzo di ricambio. (Denomination)
6. Misura, in caso di ordine per metro.

**COMMANDE DE PIÉCES DE RECHANGE**

Les indications suivantes doivent être fournies lors de la commande de pièces de rechange, afin d'éviter toute erreur de livraison:

1. Type de machine.
2. Numéro de série.
3. Quantité désirée de pièce de rechange. (Quantity)
4. Numéro de la pièce de rechange. (Part N°)
5. Dénomination de la pièce de rechange. (Denomination)
6. Longueur en cas de commande au mètre.

**YOUR AGENT/DEALER:**

# DYNAPAC

## Text pages

The text pages is structured as the picture on the right.

1. This is the remarks for specific items and the descriptions of the remarks is at the bottom of the parts list.

2. Parts indicated by a dot and moved to the right are included when buying the assembled unit above.

3. Spare parts and service code for a specific part, mainly for internal use at Dynapac. "A" = Service part, "B" = Fast moving part, "C" = Suggested exchanged part and "D" = Regular spare part.

<b>DYNAPAC</b>					
Cooling system					
Ref. No.	Part No.	Rem.	Qty	Description	Code
1	223047		1	Water cooler	③ C
2	935852		1	Radiator cap	D
3	935851	①	1	Cock	
4	373263	A	1	Radiator hose	D
5	313009		6	Clamp	
6	205058	B	1XL	Rubber clutch	
7	373261	C	1	Radiator hose	D
8			1	Oil cooler	D
9	223289		1	Plate	
10	902166	D	1XL	Edge trim	
11	223287	E	1	Holder	
12	223288	F	1	Holder	
13	908168		1	Fan guard	
14	908170		1	Fan shroud	
15	908171		2	Mounting bar	
16	908169		1	Fan guard	
17	500021		14	Screw	
18	902286		14	Nut	
19	600006		14	Washer	
20	313102		2	Cable strap	

A) Upper  
 B) L=060MM  
 C) Lower  
 D) L=2280MM  
 E) Left  
 F) Right

## Changes

PARTS INFO	SERVICE INFO	GROUP	PAGE	NOTES

## Notes

---



---



---



---



---



---



---



---



---



---

Notes

Lined area for writing notes, consisting of multiple horizontal lines.

## PÄRMETIKETT

För att undvika fel vid reservdelsbeställning finns här nedan två etiketter som passar i fickorna på pärmarnas ryggar. På dessa kan man se från vilket vältnummer av aktuell maskin reservdelskatalogen gäller. Gör så här:

1. Tag denna sida ur pärmen.
2. Klipp ut etiketten till **VÄNSTER** (1) och sätt in den i fickan på **DENNA** pärmens rygg.
3. Finns det en etikett till **HÖGER** (2), kan denna användas på pärmen för **FÖREGÅENDE** utgåva av denna katalog.
4. Kasta detta papper.

## KATALOG-BESCHRIFTUNG

Zur Vermeidung von Fehlern bei der Ersatzteilbestellung benutzen Sie bitte die unteren Beschriftungen, um die Kataloge auf der Rückseite zu kennzeichnen. Auf der Beschriftung ist angegeben, für welche Maschinennummern der jeweilige Katalog gültig ist. Ablauf:

1. Nehmen Sie dieses Blatt aus dem Katalog.
2. Schneiden Sie die **LINKE** Beschriftung (1) aus. Schieben Sie die Beschriftung in die tasche auf **DEM** Katalogrücke.
3. Sollte die Beschriftung unten **RECHTS** (2) mitgeliefert werden, kennzeichnen Sie damit bitte die **ÄLTERE** Ausführung dieses Kataloges.
4. Den Rest dieses Blattes bitte vernichten.

## ETIQUETA PARA LA CARPETA

Para evitar errores al pedir repuestos utilicen las etiquetas abajo descritas para identificar los catálogos en la parte trasera de la carpeta. En la etiqueta se ven los números de referencia de la serie para la cual es válido el catálogo. Instrucciones:

1. Quitar esta página de la carpeta.
2. Corta la etiqueta **IZQUIERDA** (1) y ponerla en **ESTA** carpeta en la parte trasera.
3. Si hay una etiqueta en la parte **DERECHA** (2) se puede utilizar en la carpeta para el catálogo que **PRECEDE** a esta.
4. Tirar esta hoja.

## BINDER LABEL

To avoid errors when ordering spare parts use the labels below to identify the catalogues on the back of the binder. The label contain the serial number range for which the catalogue is valid. Do like this:

1. Remove this page from the binder.
2. Cut out the **LEFT** label (1) and put it on **THIS** binders back.
3. If there is a label to the **RIGHT** (2), it can be used on the binder for **PRECEDING** issue of this catalogue.
4. Throw away this paper.

## ETICHETTAPOSTASULRACCOGLITORE

Per evitare errori quando ordinate pezzi di ricambio, usate le etichette in calce che servono ad identificare i cataloghi sul retro del raccoglitore. L'etichetta indica il numero di matricola delle macchine prese in considerazione nel catalogo.

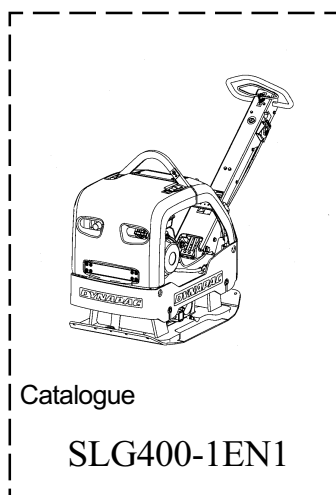
1. Rimuovete questa pagina dal raccoglitore.
2. Ritagliate l'etichetta posta a **SINISTRA** (1) e ponetela sul retro **DEL** raccoglitore.
3. Se trovate anche un'etichetta sulla **DESTRA** (2), ritagliatela e ponetela sul raccoglitore relativo alla **PRECEDENTE** edizione del catalogo.
4. Distruggete questo foglio.

## ETIQUETAGE DU CATALOGUE

Afin d'éviter des erreurs lors de commandes de pièces de rechange, nous vous conseillons d'apposer les marquages ci-dessous à l'arrière du classeur, pour identifier les catalogues. Ce marquage indique les numéros de série pour lesquels le catalogue est adapté. Il convient de procéder de la façon suivante:

1. Retirez cette page du classeur.
2. Découpez l'étiquette de **GAUCHE** (1), et apposez-la à l'arrière de **CE** catalogue.
3. Si il y a une étiquette à **DROITE** (2), vous pourrez l'apposer sur le classeur de l'édition **PRECEDENTE** du catalogue.
4. Détruire cette feuille.

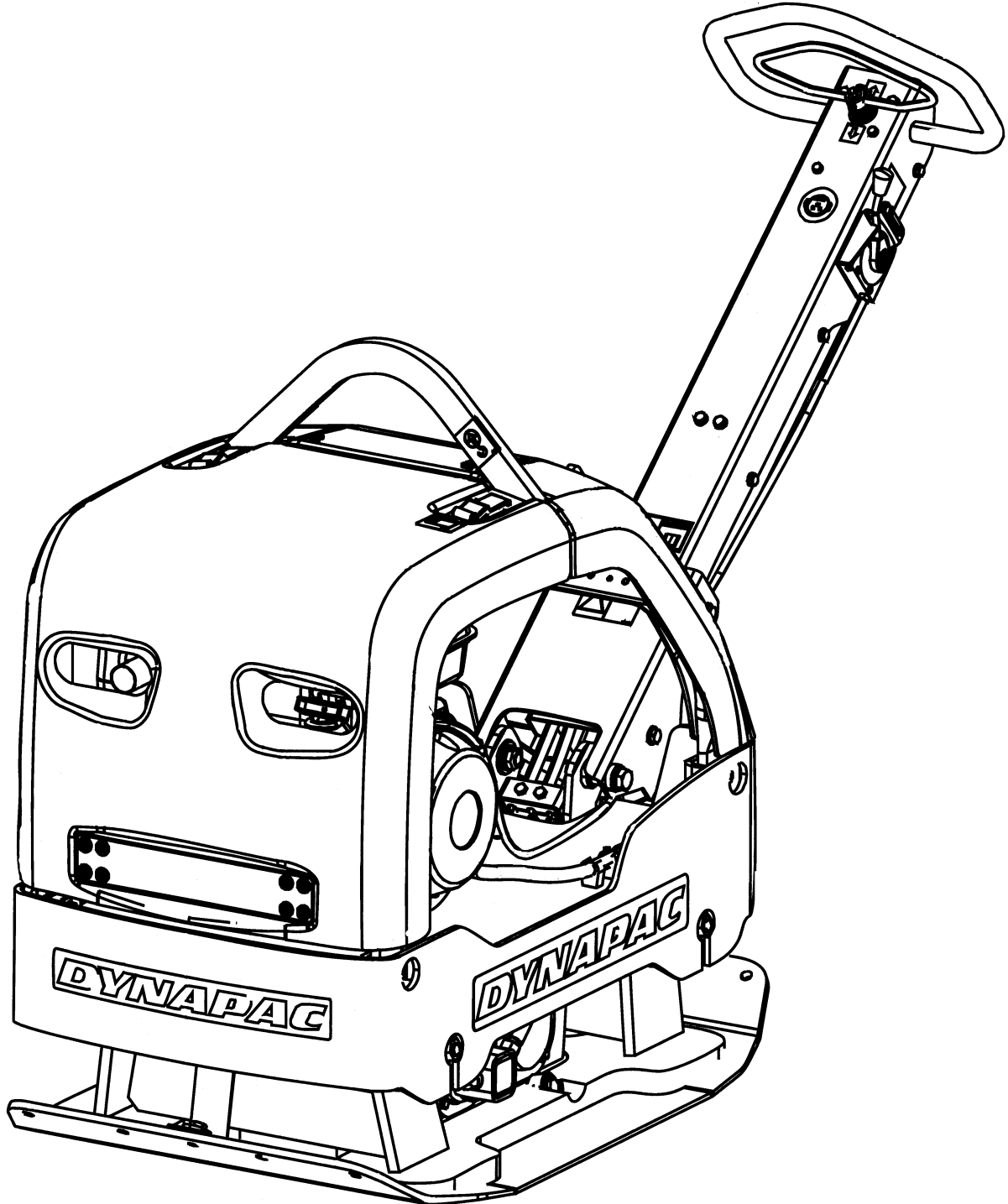
1.







<b>LG400 SN: *34000001*-</b> .....	<b>2</b>
<b>Main assy, engine plate and lower part</b> .....	<b>4</b>
Main assy, Honda .....	6
Frame and hoods .....	8
Main assy, Lombardini .....	10
Engine plate and ground plate .....	12
Ground plate and eccentric element .....	14
Frame and hoods .....	8
<b>Eccentric element</b> .....	<b>16</b>
Eccentric element .....	18
Piston, cpl .....	20
<b>Engine and engine installation</b> .....	<b>22</b>
Engine installation, Honda .....	24
Engine, cpl Honda .....	26
Engine installation, Lombardini .....	28
Engine, cpl Lombardini .....	30
<b>Power transmission</b> .....	<b>32</b>
Centrifugal clutch Honda .....	34
Centrifugal clutch Lombardini .....	36
Belt tightner .....	38
<b>Hydraulic system</b> .....	<b>40</b>
Hydraulic oil tank .....	42
Hydraulic pump installation .....	44
<b>Electrical equipment</b> .....	<b>46</b>
Battery installation .....	48
<b>Handle</b> .....	<b>50</b>
Handle .....	52
<b>Decals and documentation</b> .....	<b>54</b>
Decals and documentation .....	56



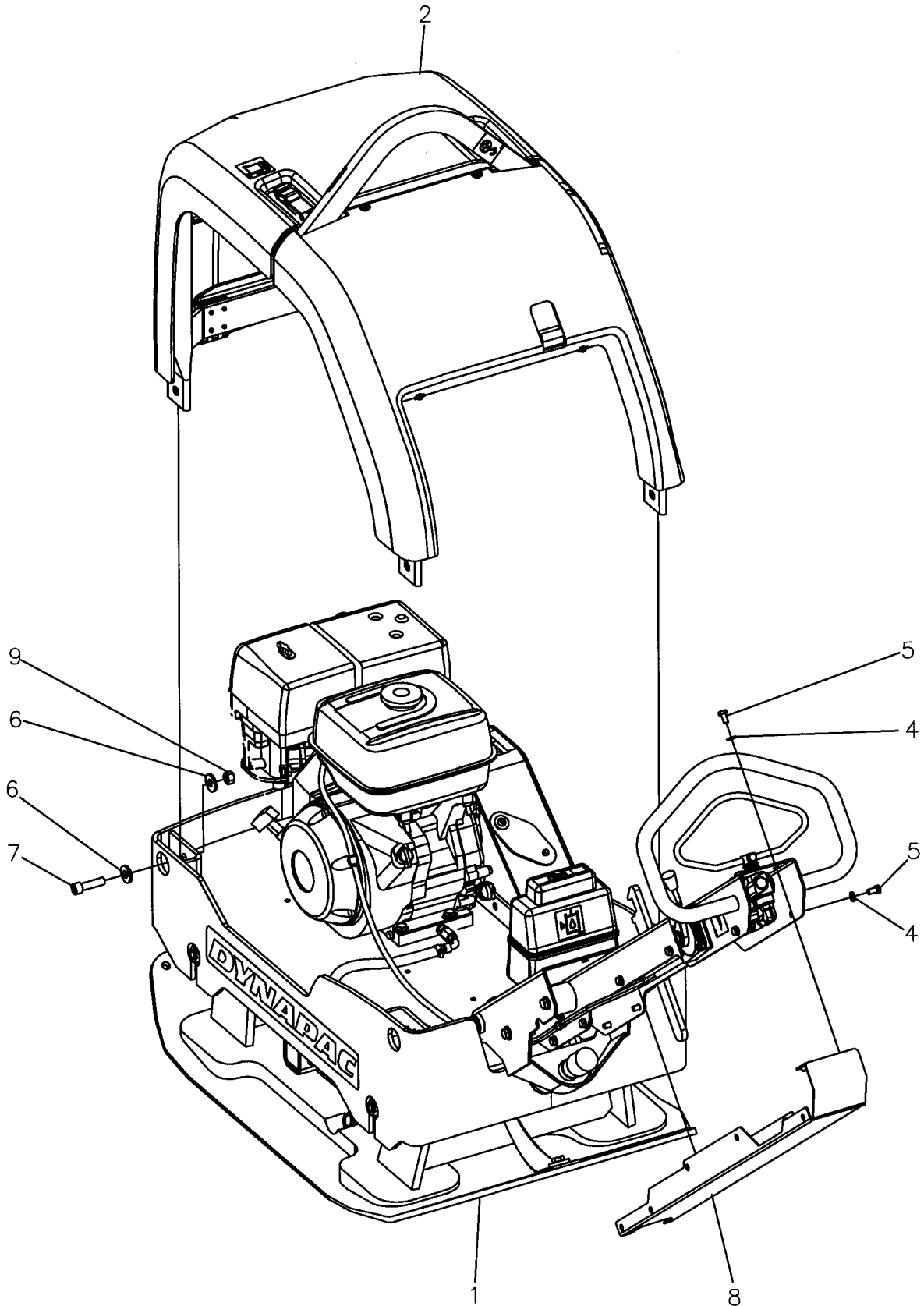
**LG400 SN: \*3400001\*-**

<b>Item</b>	<b>Part No</b>	<b>Rem Qty</b>	<b>Description</b>	<b>Code</b>
10		1	Main assy, engine plate and lower part ( Page 4 )	
20		1	Eccentric element ( Page 16 )	
30		1	Engine and engine installation ( Page 22 )	
40		1	Power transmission ( Page 32 )	
50		1	Hydraulic system ( Page 40 )	
60		1	Electrical equipment ( Page 46 )	
70		1	Handle ( Page 50 )	
80		1	Decals and documentation ( Page 54 )	
		1		

**Main assy, engine plate and lower part**

**Main assy, engine plate and lower part**

<b>Item</b>	<b>Part No</b>	<b>Rem Qty</b>	<b>Description</b>	<b>Code</b>
10			Main assy, Honda ( Page 6 )	
15			Main assy, Lombardini ( Page 10 )	
20			Engine plate and ground plate ( Page 12 )	
30			Ground plate and eccentric element ( Page 14 )	
40			Frame and hoods ( Page 8 )	

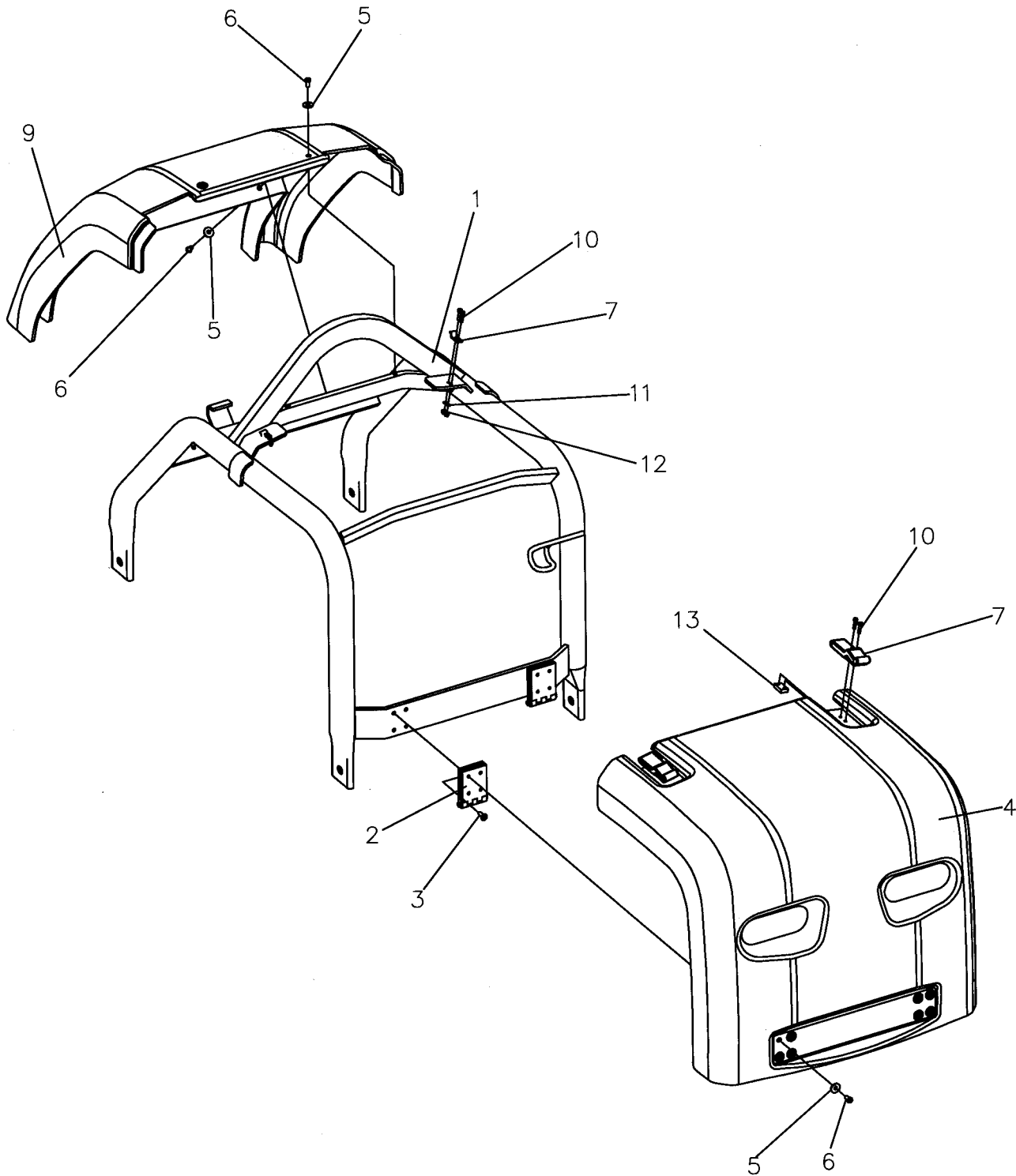


**Main assy, Honda**

<b>Item</b>	<b>Part No</b>	<b>Rem Qty</b>	<b>Description</b>	<b>Code</b>
1			Engine plate and ground plate ( Page 12 )	
2		1	Frame and hoods ( Page 8 )	
4	4700904229	12	Washer	C
5	4700500019	12	Screw	C
6	4700904213	8	Washer	C
7	4700904522	4	Screw	
8	4700397540	1	Cover	
9	4700928849	4	Nut	C

**Frame and hoods**

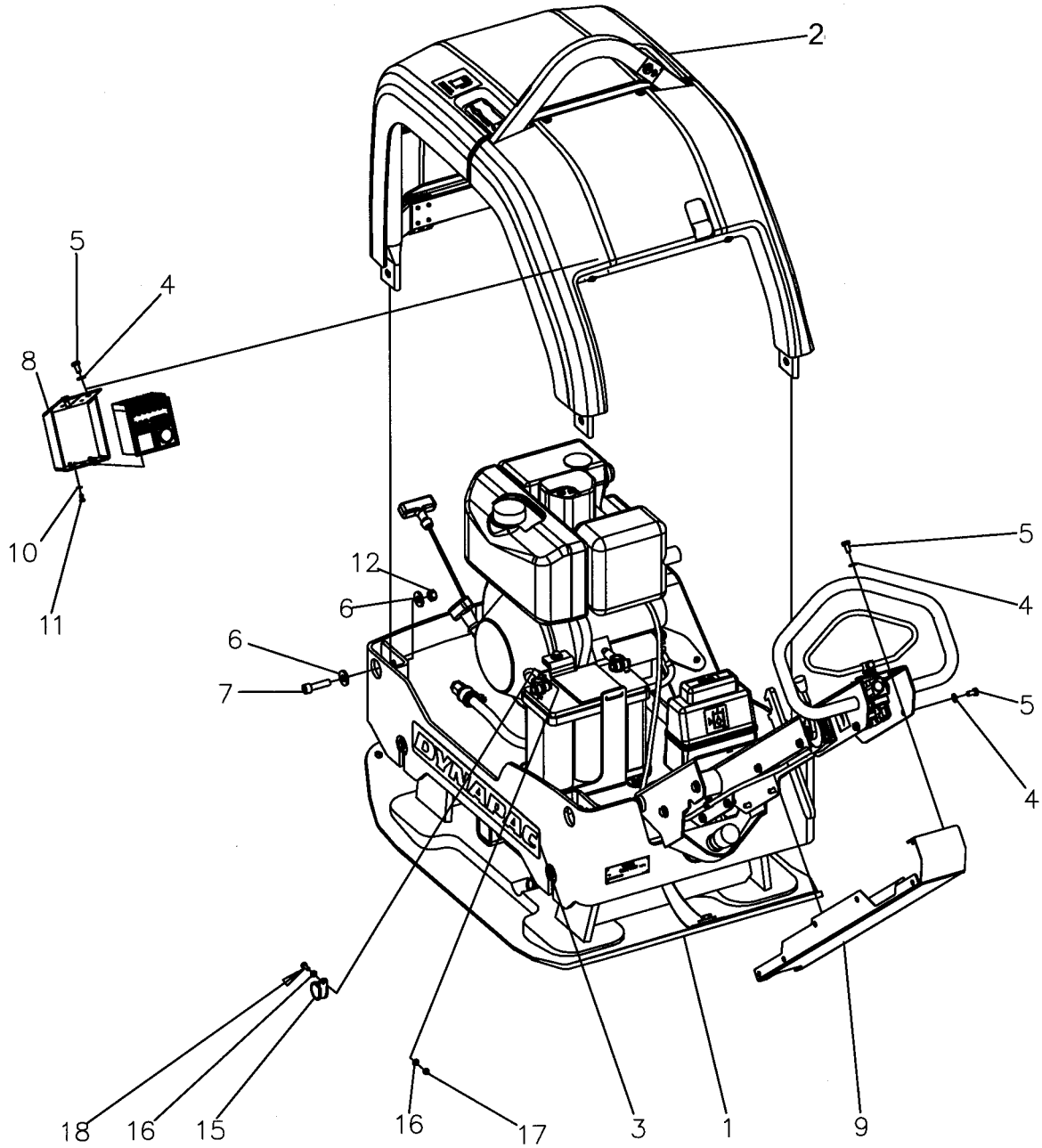
**19048**





**Frame and hoods**

<b>Item</b>	<b>Part No</b>	<b>Rem Qty</b>	<b>Description</b>	<b>Code</b>
1	4700397483	1	Protective frame	
2	4700381882	2	Hinge	
3	4700904649	8	Screw	
4	4700397477	1	Cover	
5	4700904655	12	Washer	
6	4700904650	12	Screw	C
7	4700388846	2	Latch	
9	4700397478	1	Cover	
10	4700508022	8	Screw	M4x16
11	4700904698	4	Washer	C
12	4700923976	4	Nut	C
13	4700387956	2	Stop plate	

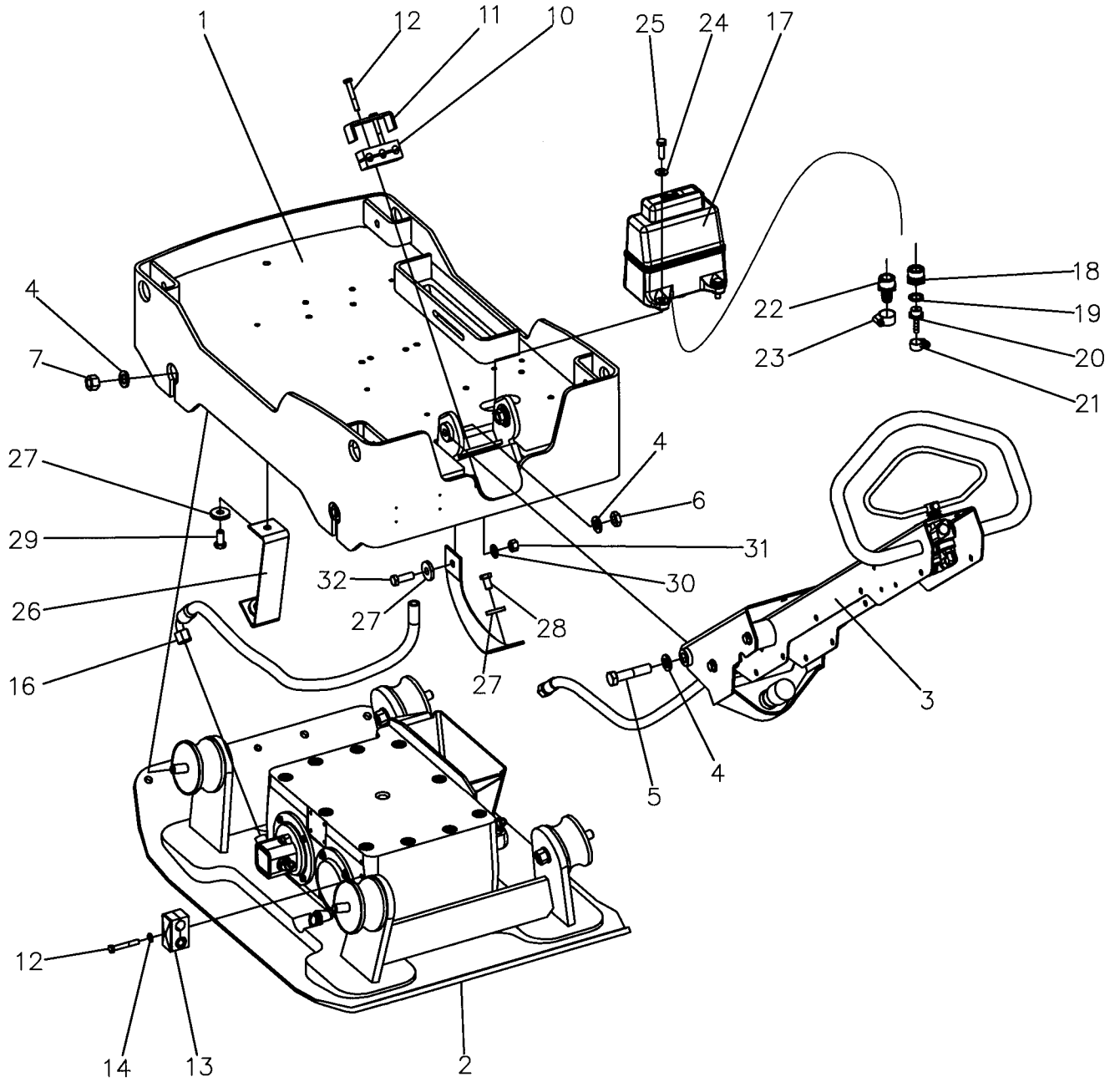


**Main assy, Lombardini**

<b>Item</b>	<b>Part No</b>	<b>Rem Qty</b>	<b>Description</b>	<b>Code</b>
1		1	Engine installation	
2		1	Frame and hoods ( Page 8 )	
4	4700904229	14	Washer	8,4x16x1,5 C
5	4700500019	14	Screw	M8x16H 8.8 A2K C
6	4700904213	8	Washer	C
7	4700904522	4	Screw	
8	4700397254	1	Bracket	
9	4700397540	1	Cover	
10	4700904281	4	Washer	5,3x10x1 300HV C
11	4700500003	4	Screw	C
12	4700928849	4	Nut	M12-1,75 C
15	4700921084	1	Pipe clamp	
16	4700904228	2	Washer	6,4x12x1,5 C
17	4700570004	1	Nut	M6X1,00 -8 A2K C
18	4700500013	1	Screw	M6-1x16 8,8 C

**Engine plate and ground plate**

**19037**

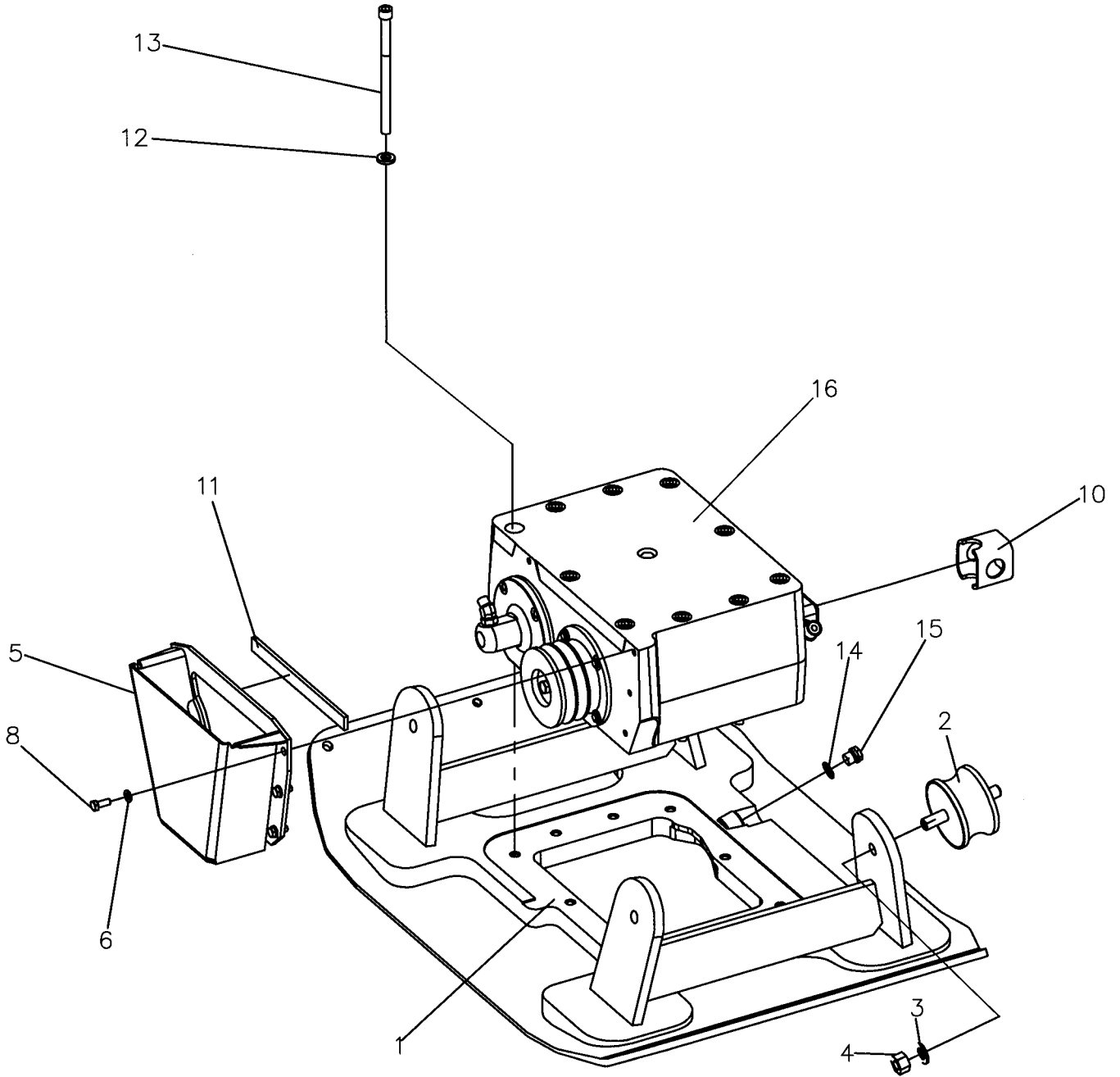


Engine plate and ground plate

Item	Part No	Rem	Qty	Description	Code
1	D397173-01	1		Engine plate	
2				Ground plate and eccentric element ( Page 14 )	
3		1		Handle ( Page 52 )	
4	4700904232	8		Washer	C
5	4700947943	2		Screw	
6	4700573004	2		Nut	C
7	4700570008	4		Nut	C
				M16 -8	
10	4700280534	1		Rubber block	
11	D100505023	1		Bracket	
12	4700500067	3		Screw	
				M8-1,25x55 8,8	
13	4700383458	1		Hose holder	
14	4700904229	1		Washer	C
				8,4x16x1,5	
16	4700378029	1		Hydraulic hose	
17		1		Hydraulic oil tank ( Page 42 )	
18	4700383039	1		Reducer	
19	4700480124	1		Washer	
20	4700383353	1		Hose coupling	
21	4700313108	1		Hose clamp	
22	4700383038	1		Hose coupling	
23	4700313003	1		Hose clamp	D
24	4700904230	4		Steel plain washer	C
25	4700500029	4		Hexagon head screw	C
26	4700395582	2		Strap	
27	4700924543	4		Washer	
28	4700500053	2		Screw	C
				M8x20H 8.8	
29	4700500051	1		Screw	C
				M12x25H 8.8 A3K	
30	4700904231	1		Washer	C
				13x24x2 300 HV	
31	4700570007	1		Hexagon nut	C
				M12	
32	4700500037	1		Screw	C
		1			C

**Ground plate and eccentric element**

19038



**Ground plate and eccentric element**

Item	Part No	Rem	Qty	Description	Code
1	4812070285		1	Ground plate	
2	4700280454		4	Shock absorber	B
3	4700904232		4	Washer	C
4	4700570008		4	Nut	C
				M16 -8	
5	4812070355		1	V-belt cover	
6	4700904229		5	Washer	C
				8,4x16x1,5	
8	4700500053		5	Screw	C
				M8x20H 8.8	
10	4700280540		1	Cover	
11	4700926911	A	1XL	Rubber strip	
12	4700904703		10	Washer	C
13	4700792829		10	Screw	
14	4700162011		1	Washer, sealing	D
15	4700232143		1	Plug	
16			1	Eccentric element ( Page 18 )	

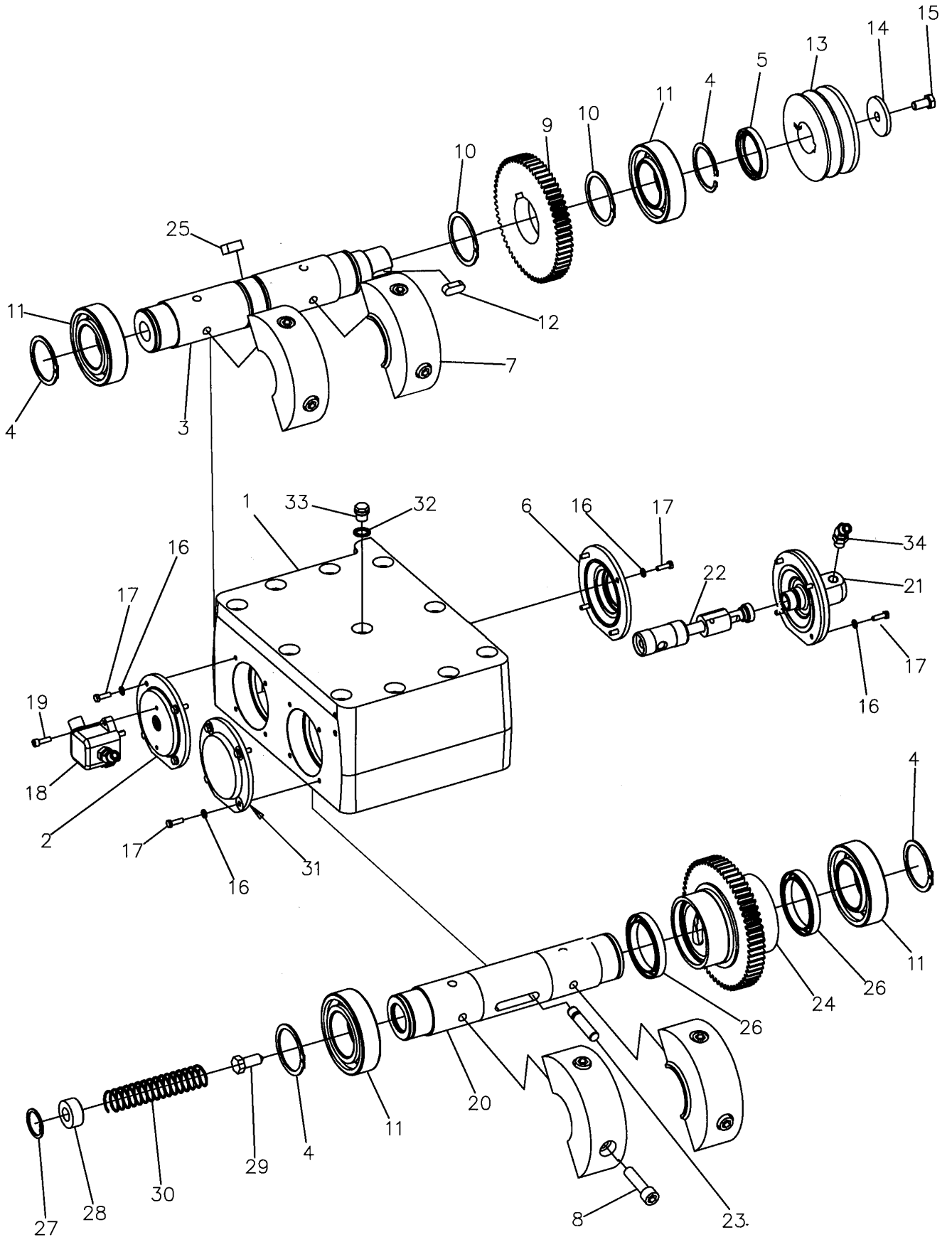
A) L = 0.25 m





**Eccentric element**

<b>Item</b>	<b>Part No</b>	<b>Rem Qty</b>	<b>Description</b>	<b>Code</b>
10		1	Eccentric element ( Page 18 )	
20		1	Piston, cpl ( Page 20 )	
		1		

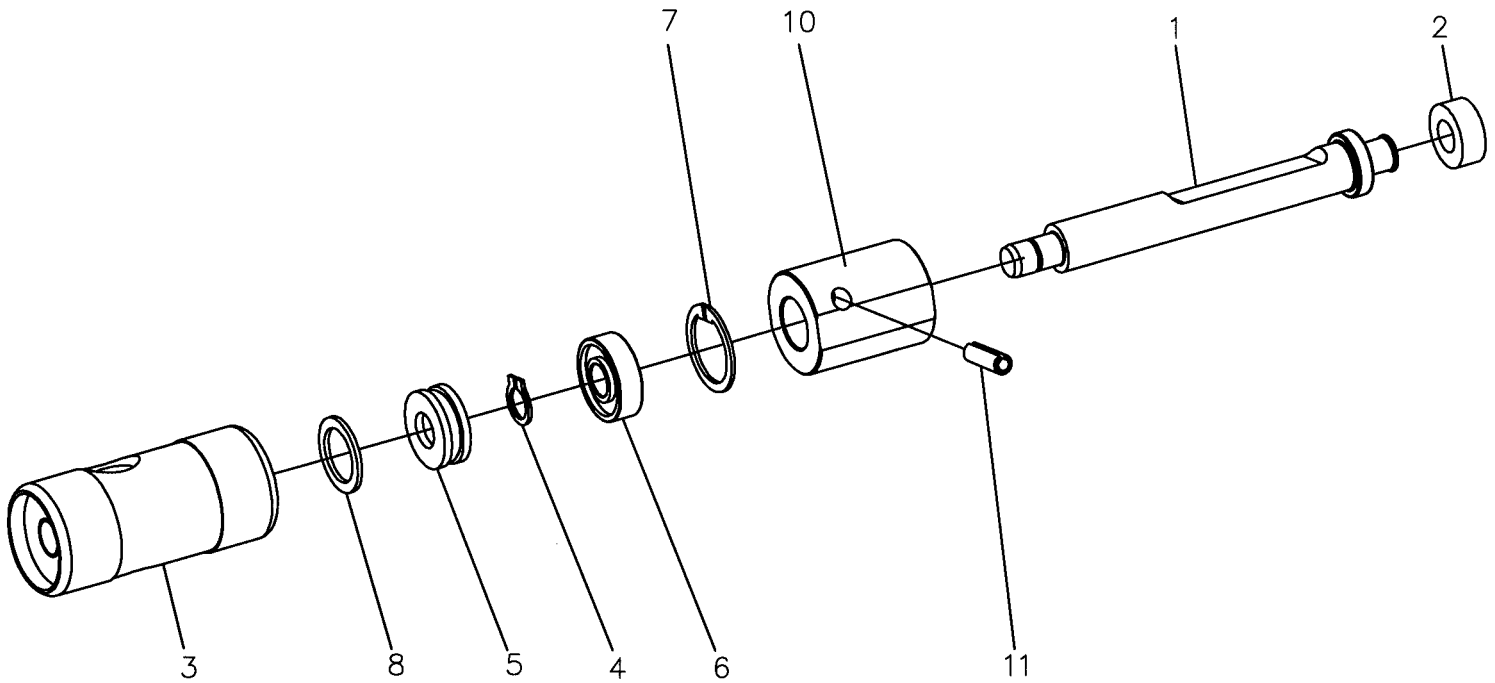


**Eccentric element**

Item	Part No	Rem Qty	Description	Code
1	4700397520	1	Eccentric housing	
2	4700379079	1	Cover	
3	4700377986	1	Shaft, cpl	
4	4700150033	4	Retaining ring	
5	4700928794	1	Sealing ring	D
6	4700379080	1	Cover	
7	4700397522	4	Eccentric weight	
8	4700928791	8	Screw	
9	4700378216	1	Gear	
10	4700150020	2	Snap ring	
11	4700928786	4	Ball bearing	
12	4700928788	1	Key	D
13	4700377776	1	Pulley	
14	4700280432	1	Washer	
15	4700500048	1	Hexagon head screw	C
16	4700904228	16	Washer	6,4x12x1,5 C
17	4700500040	16	Screw	M6-1x20 8,8 C
18		1	Hydraulic pump installation ( Page 44 )	
19	4700508025	2	Screw	M6x20
20	4812070073	1	Eccentric weight	
21	4812070042	1	Hydraulic cylinder	
22		1	Piston, cpl ( Page 20 )	
23	4700280442	1	Pin	
24	4812070093	1	Reverser	
25	4700280450	1	Key	
26	4700928796	2	Ball bearing	
27	4700928787	1	Retaining ring	
28	4700280448	1	Stop	
29	4700280449	1	Stop screw	
30	4700928798	1	Spring	
31	4700379081	1	Cover	
32	4700162011	1	Washer, sealing	D
33	4700232143	1	Plug	
34	4700792443	1	Elbow connector 45	

**Piston, cpl**

**19040**



**Piston, cpl**

<b>Item</b>	<b>Part No</b>	<b>Rem Qty</b>	<b>Description</b>	<b>Code</b>
1	4812070044	1	Piston rod	
2	4700281276	1	Sealing ring	
3	4812070052	1	Piston	
4	4700150002	1	Retaining ring	
5	4812070362	1	Thrust ball bearing	
6	4812070359	1	Ball bearing	
7	4700151039	1	Retaining ring	
8	4812070363	1	Spring washer	
10	4812070043	1	Cap	
11	4700629062	1	Spring pin	

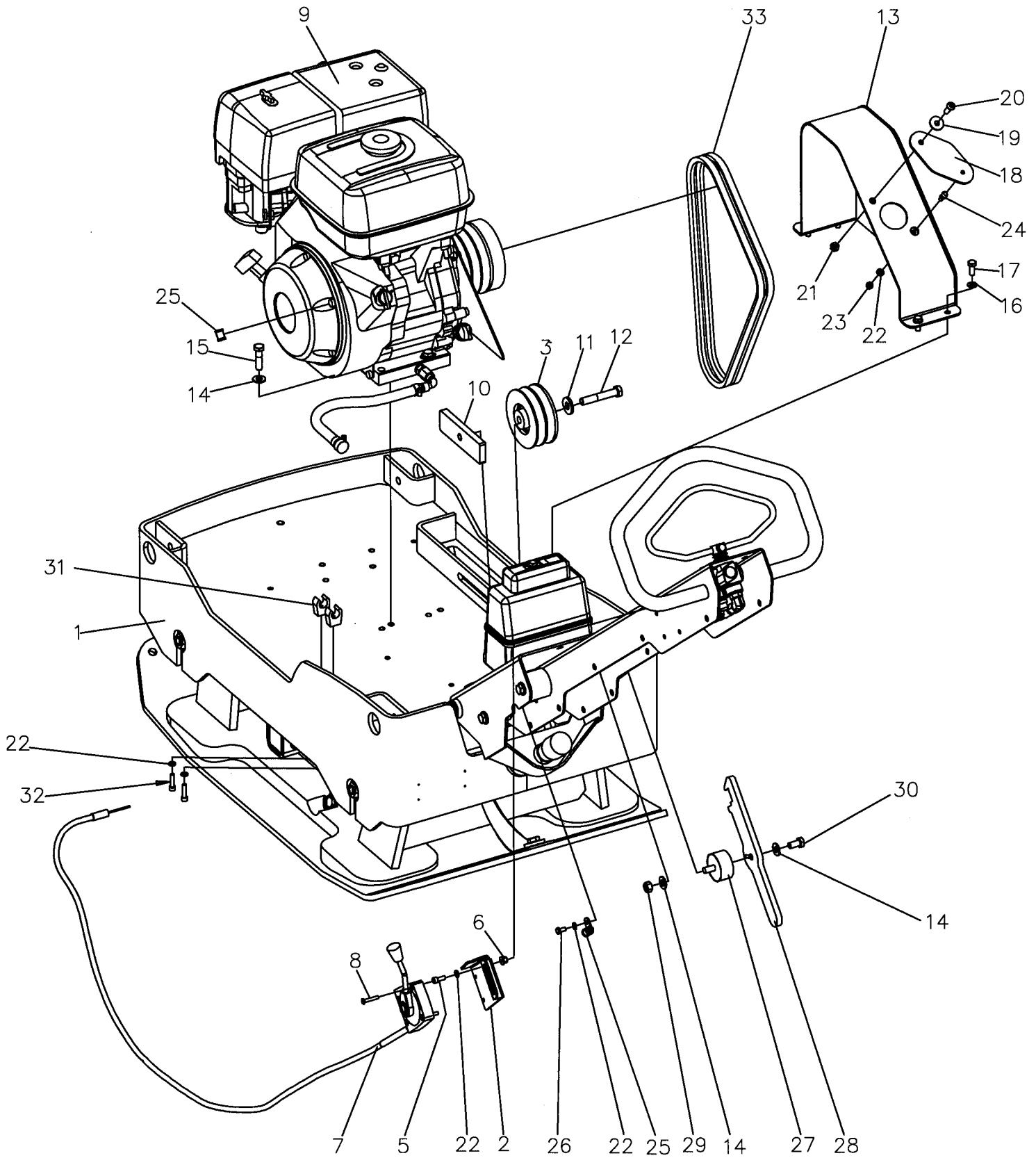


**Engine and engine installation**

<b>Item</b>	<b>Part No</b>	<b>Rem</b>	<b>Qty</b>	<b>Description</b>	<b>Code</b>
10			1	Engine installation, Honda ( Page 24 )	
15			1	Engine, cpl Honda ( Page 26 )	
20			1	Engine installation, Lombardini ( Page 28 )	
25			1	Engine, cpl Lombardini ( Page 30 )	
			1		

**Engine installation, Honda**

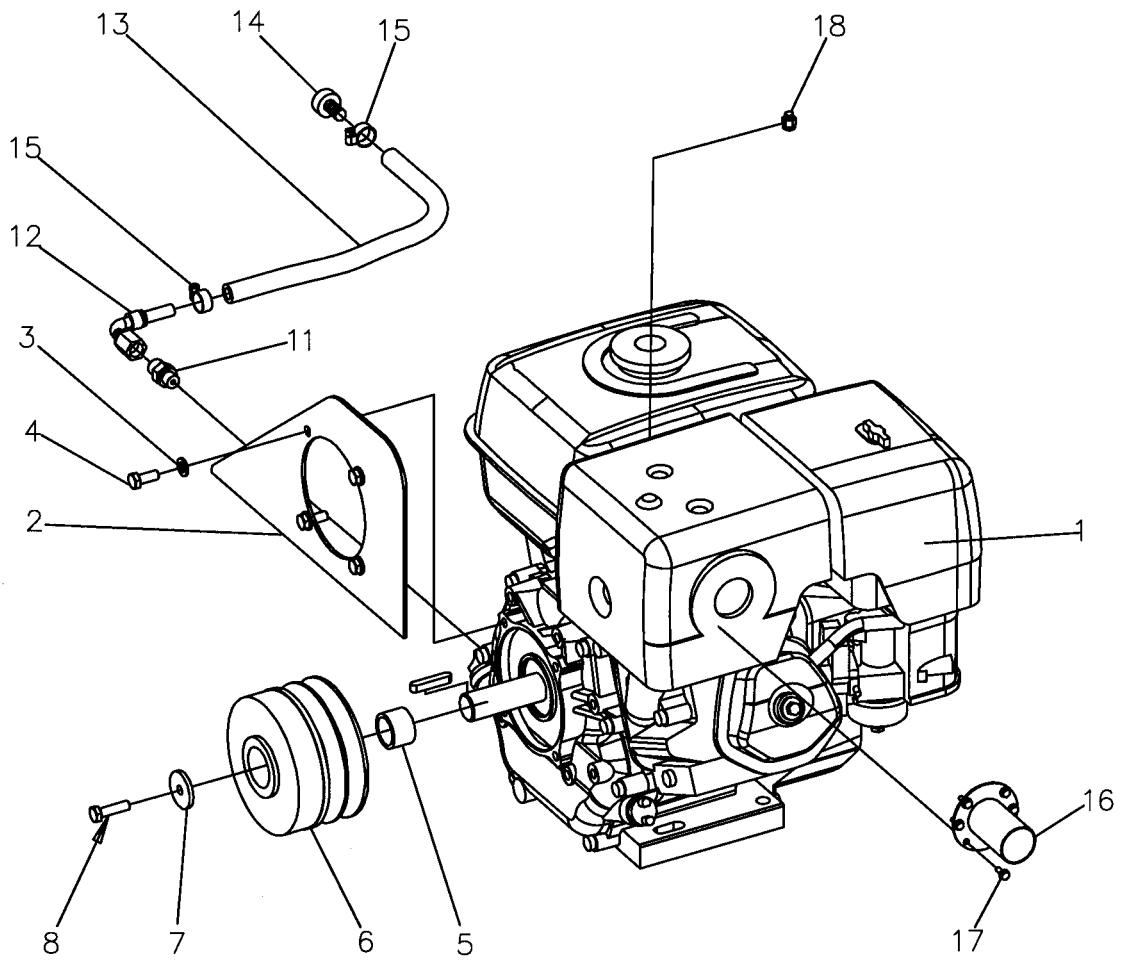
**19035**





Engine installation, Honda

Item	Part No	Rem Qty	Description	Code
1		1	Lower part	
2	4812070115	1	Bracket	
3		1	Belt tightner ( Page 38 )	
5	4700508002	1	Screw	
6	4700902285	1	Nut	C
7	4812070263	1	Throttle control, cpl	
8	4700904747	4	Screw	M5X30
9		1	Engine, cpl Honda ( Page 26 )	
10	4700397281	1	Holder	
11	4700904231	1	Washer	13x24x2 300 HV
12	4700500133	1	Screw	C
13	4812070191	1	V-belt cover	
14	4700904230	6	Steel plain washer	C
15	4700500031	4	Screw	C
16	4700904229	4	Washer	8,4x16x1,5
17	4700500053	4	Screw	M8x20H 8.8
18	4700397282	1	Rubber protection	
19	4700904656	1	Washer	
20	4700904654	1	Screw	
21	4700570005	1	Nut	M8
22	4700904228	5	Washer	6,4x12x1,5
23	4700570004	1	Nut	M6X1,00 -8 A2K
24	4700792824	1	Ball joint	
25	4700921065	2	Clamp	C
26	4700500012	1	Screw	M6x12
27	4700385387	1	Shock absorber	
28	4700379004	1	Hook	
29	4700570006	1	Nut	C
30	4700500048	1	Hexagon head screw	C
31	4700281234	2	Ryw-clips	
32	4700508012	2	Screw	C
33	4811000072	2	V-belt	



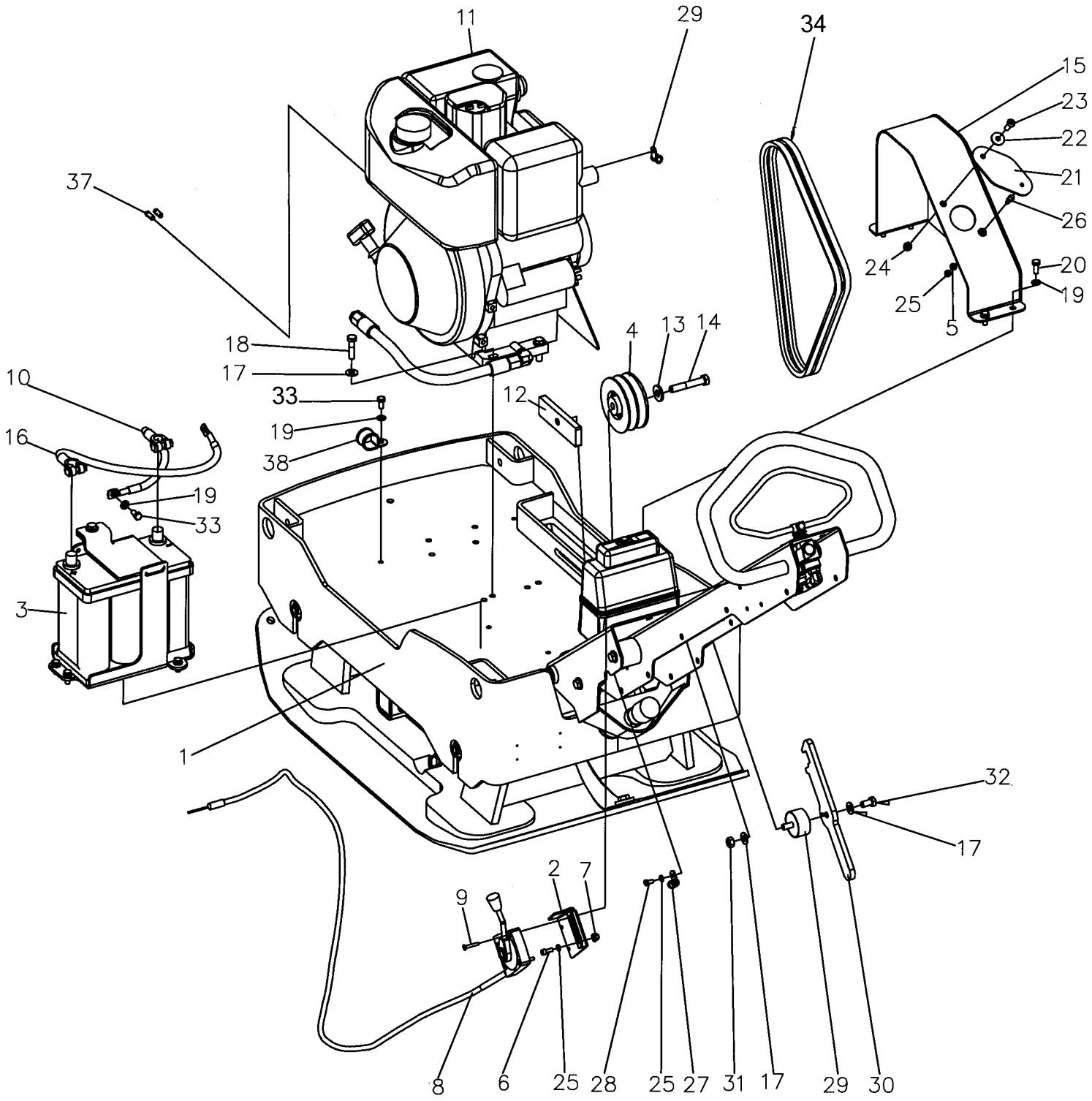
Engine, cpl Honda

Item	Part No	Rem	Qty	Description	Code
1			1	Engine	
2	4812070192		1	Belt guard, inner	
3	4700904229		4	Washer	8,4x16x1,5 C
4	4700500053		4	Screw	M8x20H 8.8 C
5	4812070223		1	Spacer	
6			1	Clutch	
7	4811000108		1	Washer	
8	4700500022		1	Screw	M8x30H 8.8 A2K C
11	4700903268		1	Connector	
12	4700792099		1	Connector	
13	D100901382	A	1XL	Hose	
14	D100504609		1	Plug	
15	4700313001		2	Hose clamp	C
16	4700397476		1	Exhaust pipe	
17	4700901315		6	Screw	C
18	4812070292		1	Holder	

A) L = 0.3 m

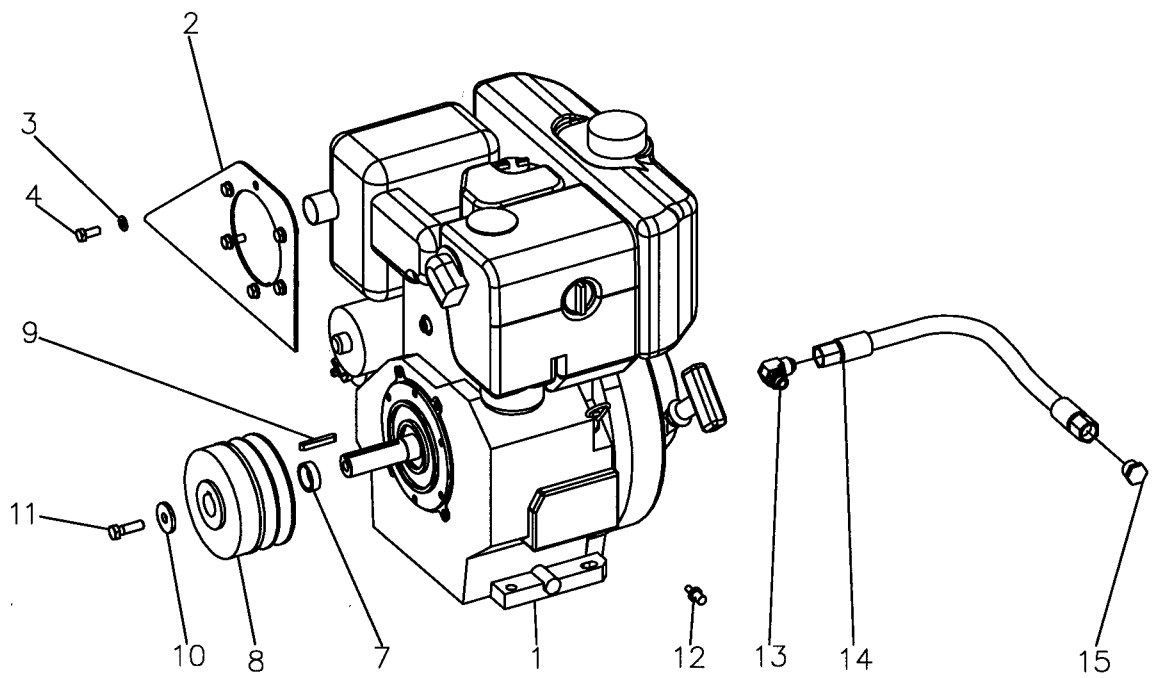
**Engine installation, Lombardini**

**19036**



Engine installation, Lombardini

Item	Part No	Rem Qty	Description	Code
1		1	Lower part	
2	4812070115	1	Bracket	
3		1	Battery installation ( Page 48 )	
4		1	Belt tightner ( Page 38 )	
5	4700904228	3	Washer	6,4x12x1,5 C
6	4700508002	1	Screw	
7	4700902285	1	Nut	C
8	4812070265	1	Throttle control	
9	4700904747	4	Screw	M5X30
10	4700792831	1	Battery cable	
11		1	Engine, cpl Lombardini ( Page 30 )	
12	4700397281	1	Holder	
13	4700904213	1	Washer	C
14	4700500133	1	Screw	C
15	4812070191	1	V-belt cover	
16	4700792830	1	Battry cable	
17	4700904230	6	Steel plain washer	C
18	4700500031	4	Screw	C
19	4700904229	6	Washer	8,4x16x1,5 C
20	4700500053	4	Screw	M8x20H 8.8 C
21	4700397282	1	Rubber protection	
22	4700904656	1	Washer	
23	4700904654	1	Screw	
24	4700570005	1	Nut	M8 C
25	4700570004	1	Nut	M6X1,00 -8 A2K C
26	4700792824	1	Ball joint	
27	4700921065	2	Clamp	C
28	4700500012	1	Screw	M6x12 C
29	4700385387	1	Shock absorber	
30	4700379004	1	Hook	
31	4700570006	1	Nut	C
32	4700500048	1	Hexagon head screw	C
33	4700500019	2	Screw	M8x16H 8.8 A2K C
34	4700904776	2	V-belt	
37	4700281236	2	Nipple	
38	4700921044	1	Clamp	C
		1		C



**Engine, cpl Lombardini**

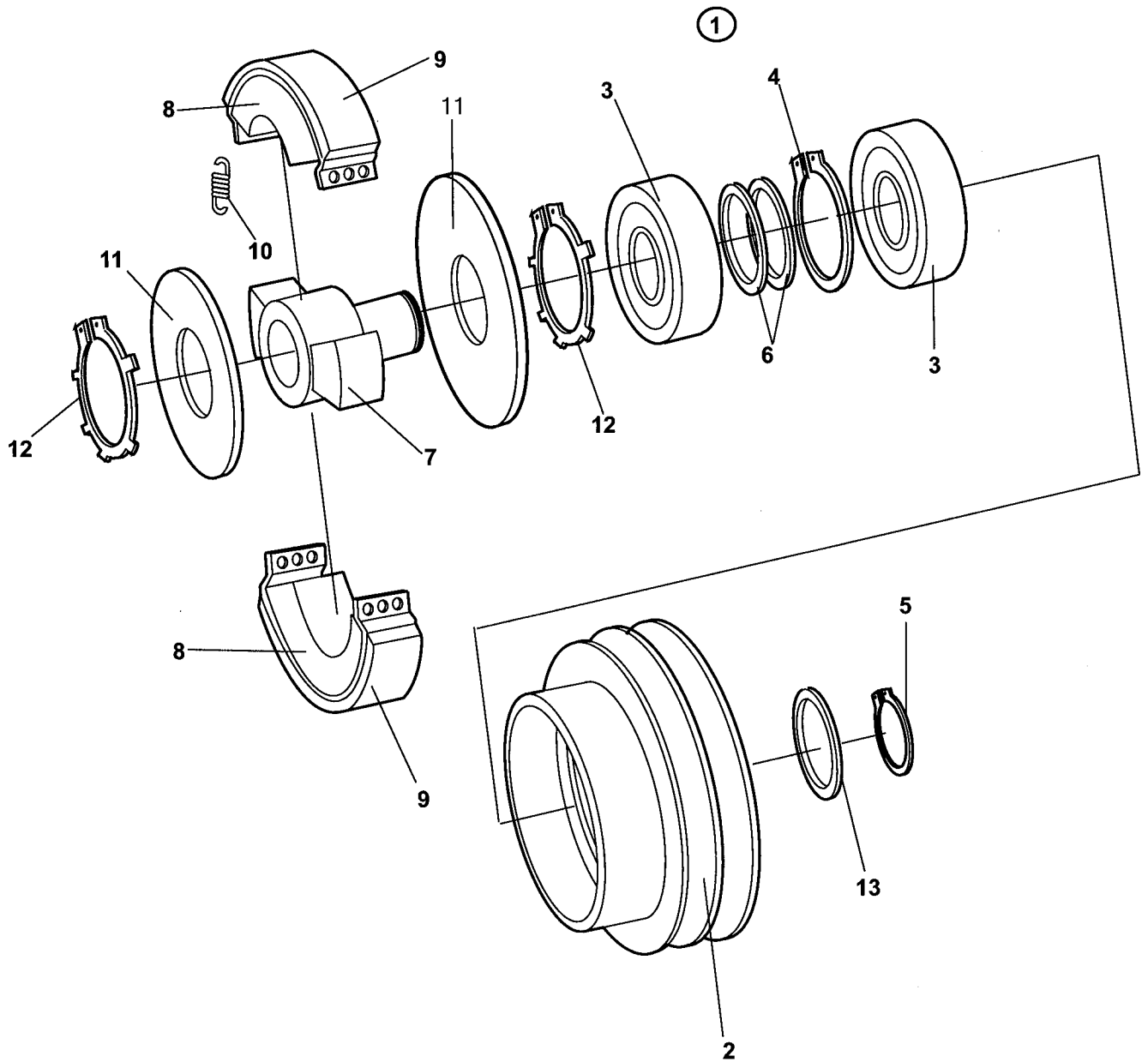
<b>Item</b>	<b>Part No</b>	<b>Rem Qty</b>	<b>Description</b>	<b>Code</b>
1	4700397531	1	Engine, cpl	
2	4812070193	1	Belt guard	
3	4700904229	6	Washer	
4	4700500053	6	Screw	
7	4700397532	1	Spacer	
8		1	Clutch	
9	4700350111	1	Key	
10	4811000126	1	Washer	
11	4700503025	1	Screw	
12	4812070282	1	Nipple	
13	4700904979	1	Elbow	
14	4700482198	1	Hydraulic hose	
15	4700232095	1	Plug	
			8,4x16x1,5	C
			M8x20H 8.8	C





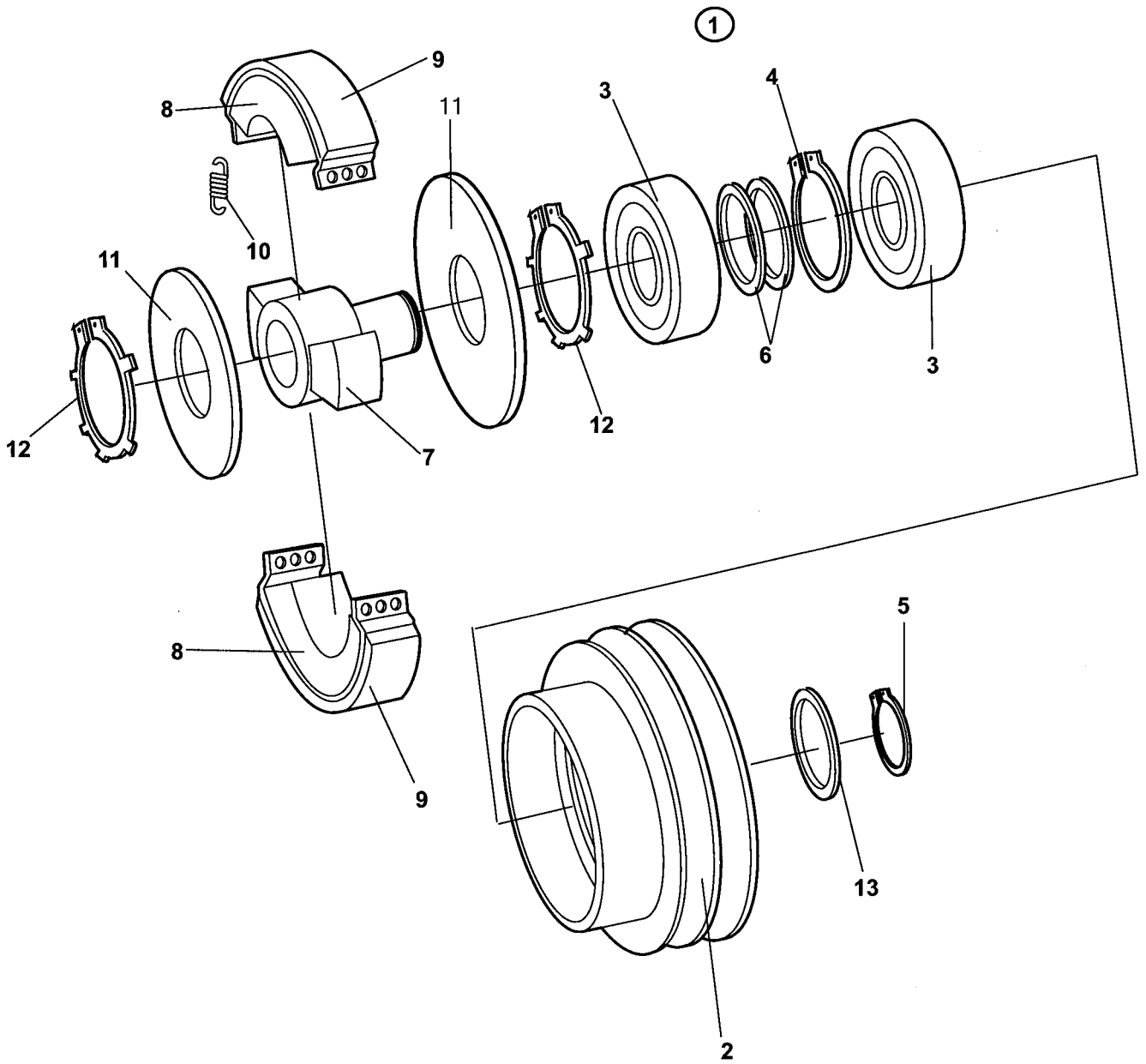
**Power transmission**

<b>Item</b>	<b>Part No</b>	<b>Rem</b>	<b>Qty</b>	<b>Description</b>	<b>Code</b>
10			1	Centrifugal clutch ( Page 34 )	Honda
20			1	Centrifugal clutch ( Page 36 )	Lombardini
30			1	Belt tightner ( Page 38 )	
			1		



**Centrifugal clutch Honda**

<b>Item</b>	<b>Part No</b>	<b>Rem Qty</b>	<b>Description</b>	<b>Code</b>
1	4812070197	1	Centrifugal clutch, cpl	
2	4812155877	1	.V-belt pulley	
3	4700945802	2	.Ball bearing	
4	4700945810	1	.Retaining ring	
5	4700935635	1	.Retaining ring	
6	4700945811	2	.Shim	
7	4812155876	1	.Hub	
8	4700945813	2	.Weight	
9	4700238206	2	.Lining	
10	4812155874	4	.Spring	
11	4700945814	2	.Cover	
12	4700945815	2	.Retaining ring	
13	4700945816	1	.Shim	

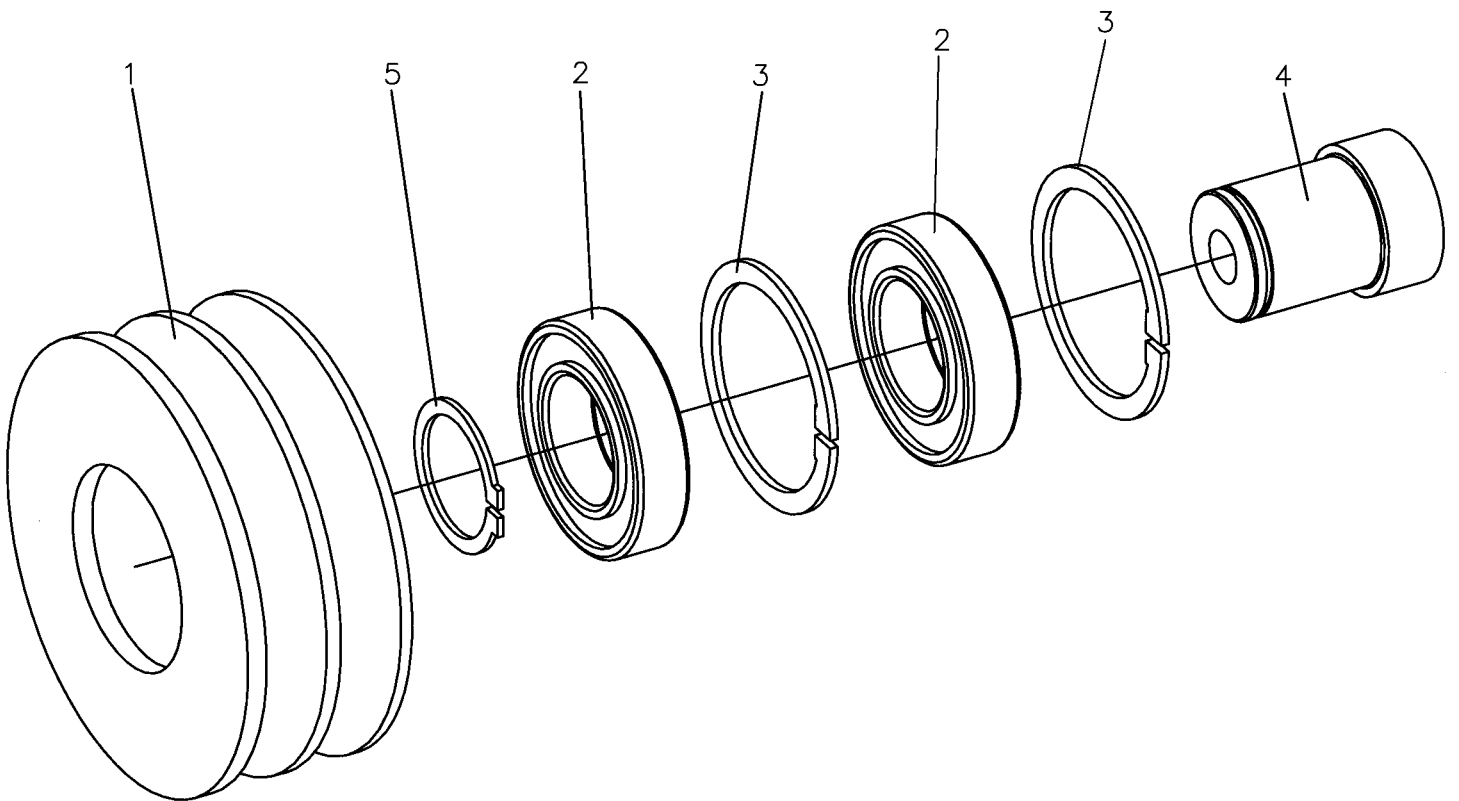


**Centrifugal clutch Lombardini**

<b>Item</b>	<b>Part No</b>	<b>Rem Qty</b>	<b>Description</b>	<b>Code</b>
1	4812070194	1	Centrifugal clutch, cpl	
2	4812155877	1	.V-belt pulley	
3	4700945802	2	Ball bearing	
4	4700945810	1	Retaining ring	
5	4700935635	1	Retaining ring	
6	4700945811	2	Shim	
7	4812155875	1	Hub	
8	4700945813	2	Weight	
9	4700238206	2	Lining	
10	4812155874	4	Spring	
11	4700945814	2	Cover	
12	4700945815	2	Retaining ring	
13	4700945816	1	Shim	
		1		

**Belt tightner**

19044



**Belt tightner**

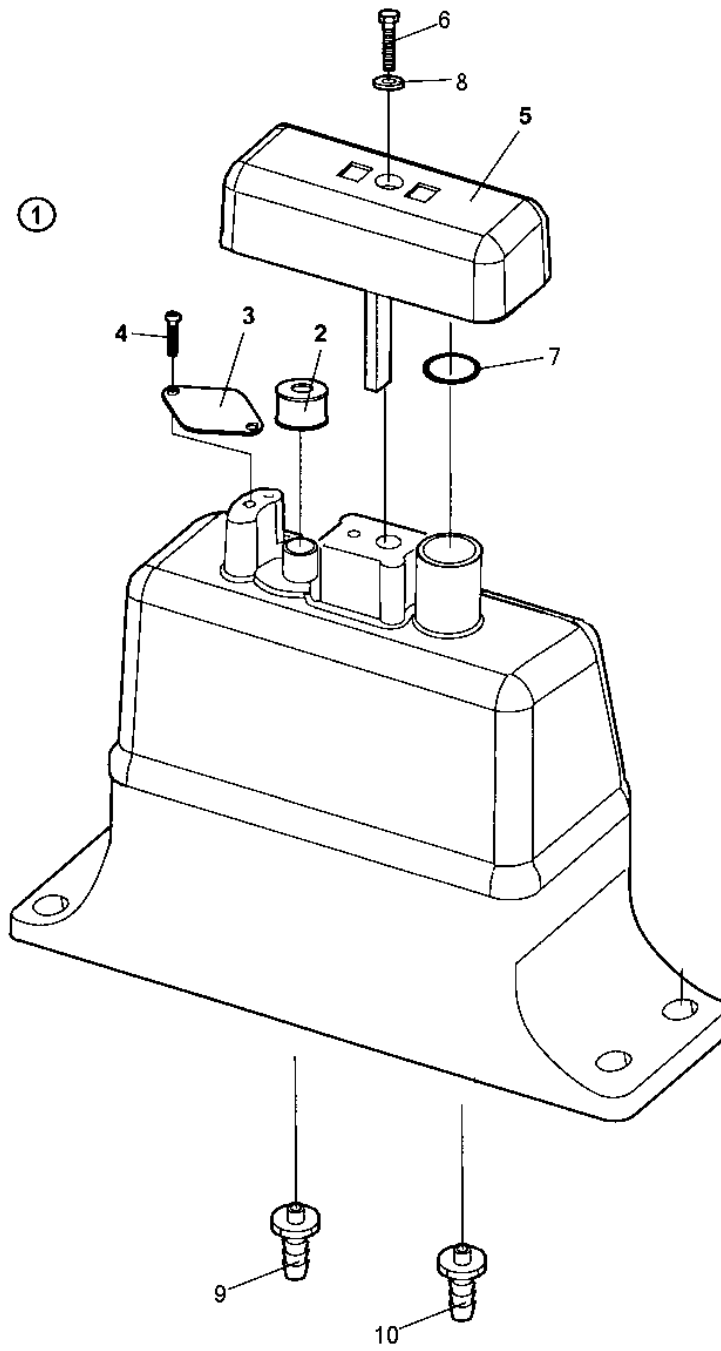
<b>Item</b>	<b>Part No</b>	<b>Rem Qty</b>	<b>Description</b>	<b>Code</b>
1	4700380517	1	V-belt pulley	
2	4700111180	2	Ball bearing	D
3	4700151019	2	Retaining ring	D
4	4700150012	1	Snap ring	D
		1		D





**Hydraulic system**

<b>Item</b>	<b>Part No</b>	<b>Rem Qty</b>	<b>Description</b>	<b>Code</b>
20		1	Hydraulic oil tank ( Page 42 )	
30		1	Hydraulic pump installation ( Page 44 )	



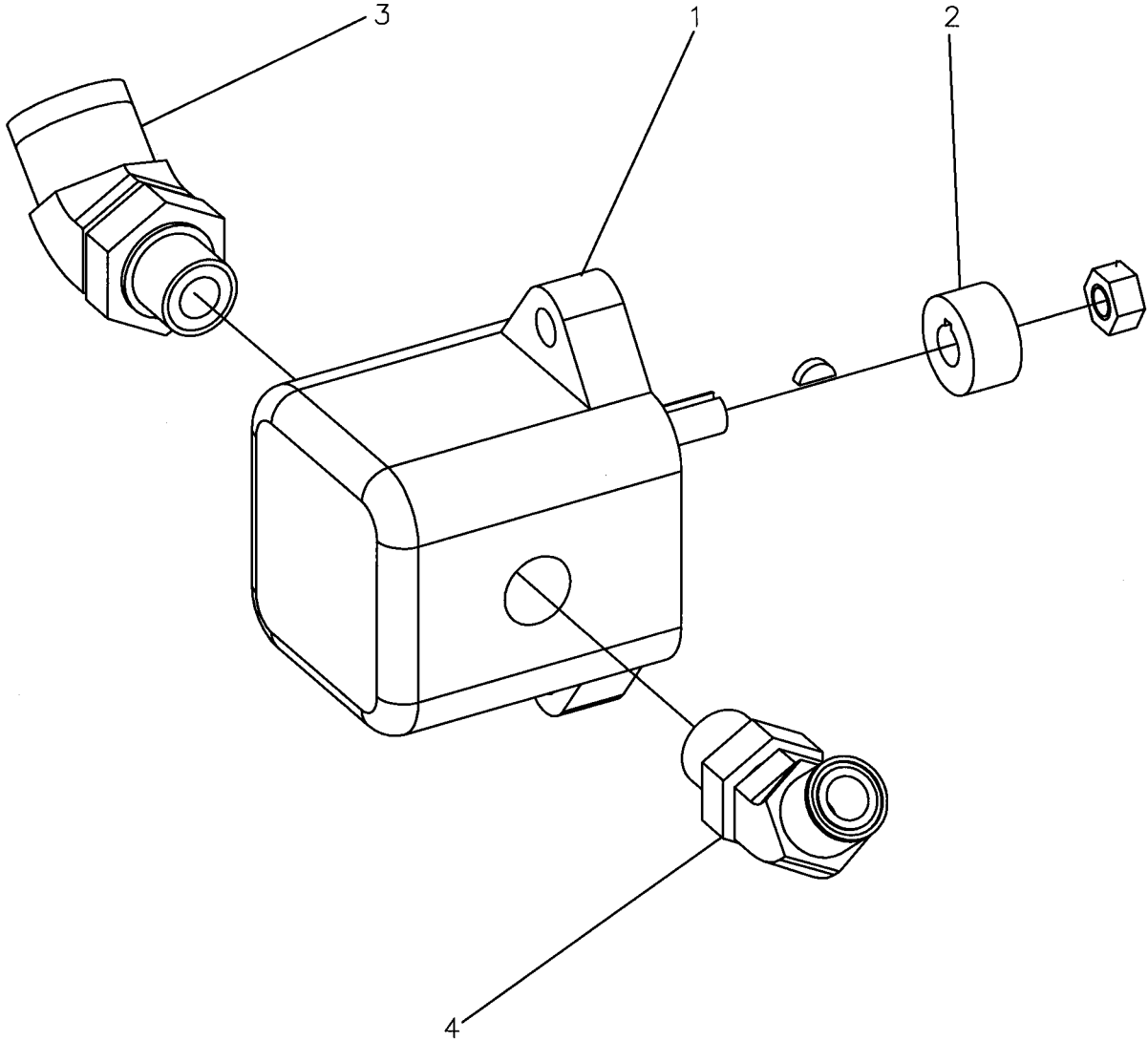
**Hydraulic oil tank**

<b>Item</b>	<b>Part No</b>	<b>Rem Qty</b>	<b>Description</b>	<b>Code</b>
1	4700376677	1	Hydraulic oil tank, cpl	
2	4700381566	1	.Air filter	
3	4700381563	1	.Holder	
4	4700904960	2	.Screw	
5	4700381385	1	.Cover	
6	4700500021	1	.Screw	M8-1,25x25 8.8 C
7	4700160110	1	.O-ring	
8	4700924229	1	.Washer	
9		A	Connection	
10		A	Connection	
		1		

A) See section engine plate and gound plate

**Hydraulic pump installation**

19041



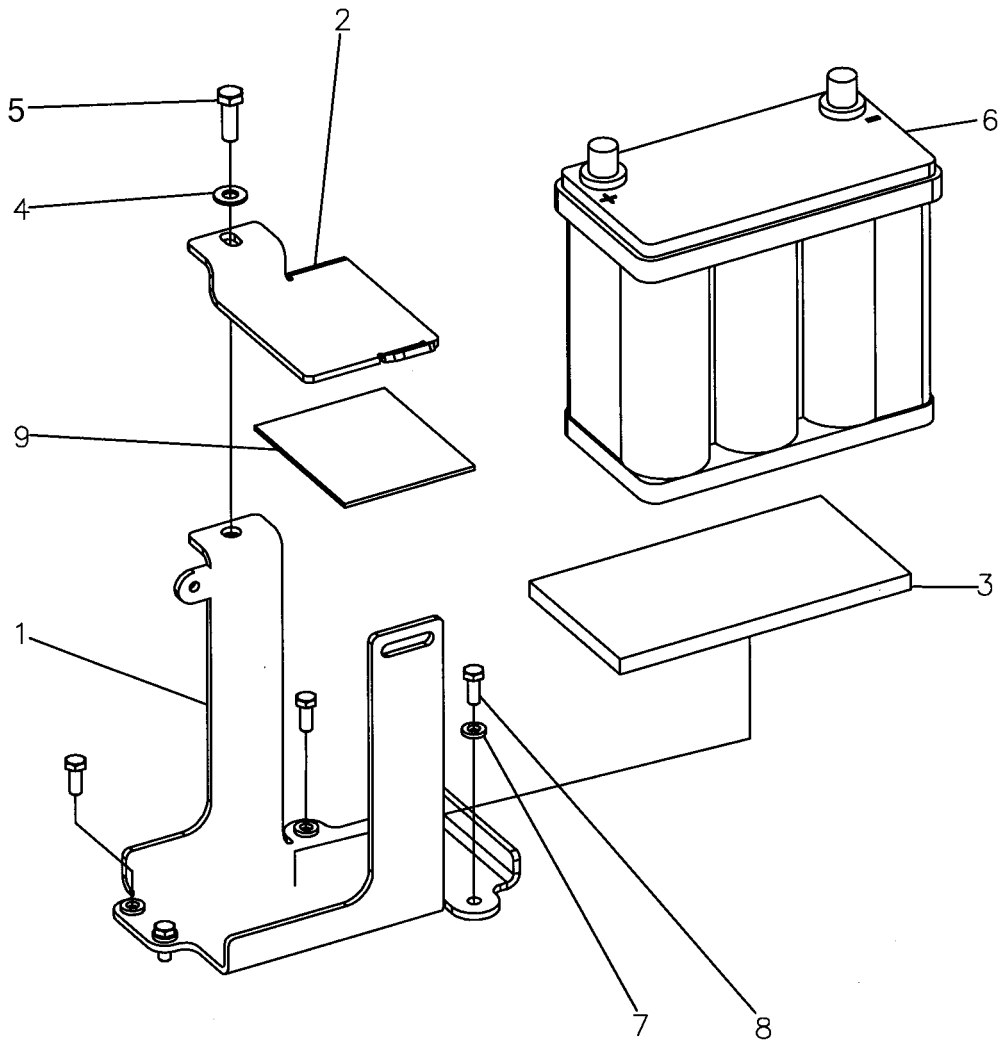
**Hydraulic pump installation**

<b>Item</b>	<b>Part No</b>	<b>Rem Qty</b>	<b>Description</b>	<b>Code</b>
1	4700383562	1	Hydraulic pump	
2	4700928894	1	Sleeve	
3	4700792253	1	Elbow	
4	4700792443	1	Elbow connector 45	



**Electrical equipment**

<b>Item</b>	<b>Part No</b>	<b>Rem Qty</b>	<b>Description</b>	<b>Code</b>
10		1	Battery installation ( Page 48 )	





**Battery installation**

<b>Item</b>	<b>Part No</b>	<b>Rem Qty</b>	<b>Description</b>	<b>Code</b>
1	4700395879	1	Holder	
2	4700395878	1	Bracket	
3	4700395687	1	Insulation	
4	4700904230	1	Steel plain washer	C
5	4700500029	1	Hexagon head screw	C
6	4700378719	1	Battery	B
7	4700904556	4	Steel plain washer	C
8	4700500053	4	Screw	C
9	4700395998	1	Rubber cloth	

M8x20H 8.8

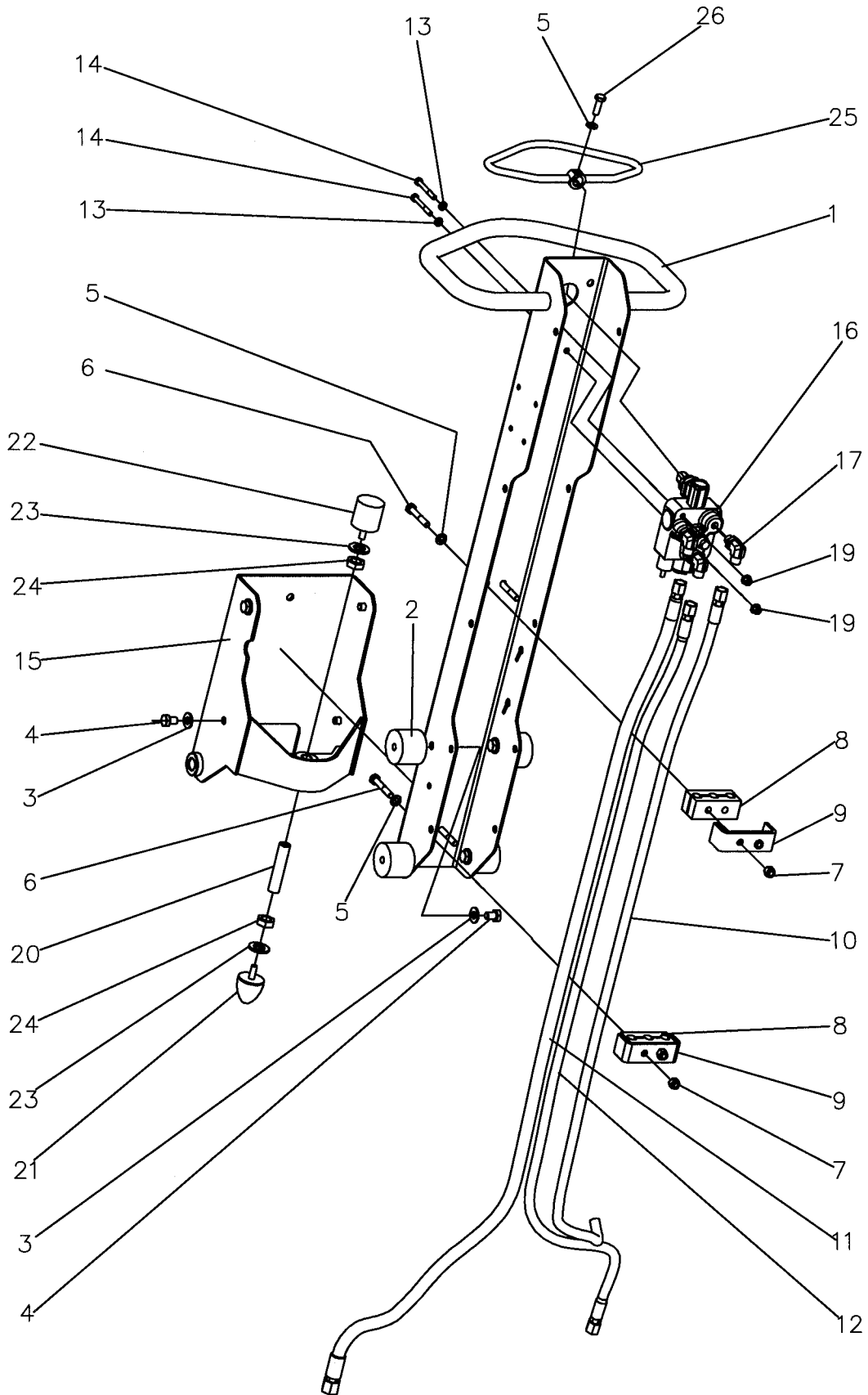


**Handle**

<b>Item</b>	<b>Part No</b>	<b>Rem Qty</b>	<b>Description</b>	<b>Code</b>
10		1	Handle ( Page 52 )	

**Handle**

**19042**



Handle

Item	Part No	Rem Qty	Description	Code
1	D397537-02	1	Handle	
2	D100900827	4	Shock absorber	
3	4700904230	8	Steel plain washer	C
4	4700500191	8	Screw	M10x14 C
5	4700904229	5	Washer	8,4x16x1,5 C
6	4700500025	4	Screw	M8-1,25x50 8,8 C
7	4700586003	4	Lock nut	M8 C
8	4700280534	2	Rubber block	
9	D100505023	2	Bracket	
10	4700395212	1	Hydraulic hose	
11	4811000104	1	Hydraulic hose	
12	4811000105	1	Hydraulic hose	
13	4700904228	2	Washer	6,4x12x1,5 C
14	4700500079	2	Screw	M6-1x50 8,8
15	D397538-02	1	Bracket	
16	4700281375	1	Valve	D
17	4700791397	3	Elbow 90, O-ring	
19	4700902285	2	Nut	C
20	4700397583	1	Stud	
21	4700792833	1	Shock absorber	
22	4700792832	1	Shock absorber	
23	4700904232	2	Washer	C
24	4700573004	2	Nut	C
25	4812070025	1	Control lever	
26	4700500021	1	Screw	M8-1,25x25 8.8 C

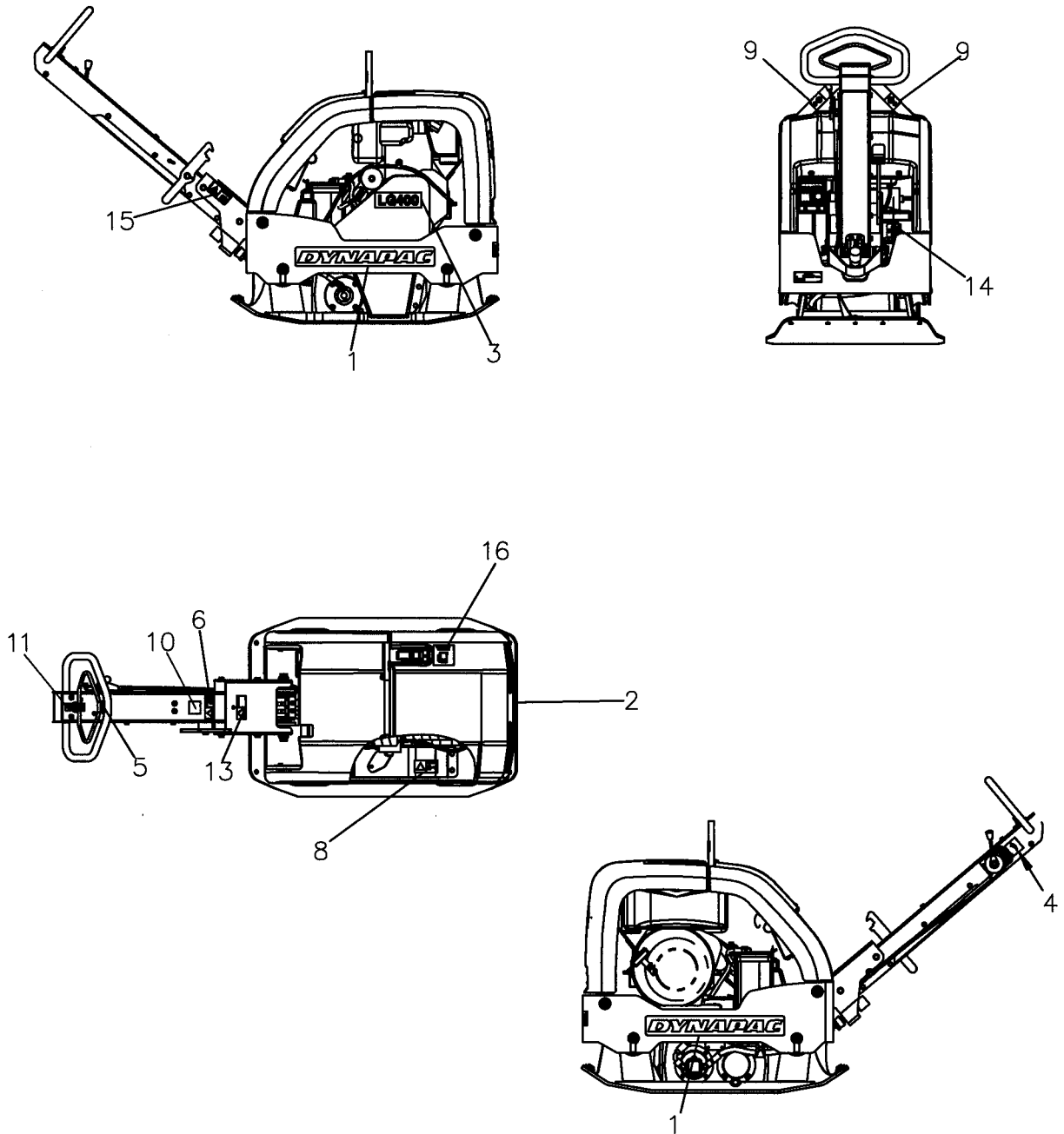


**Decals and documentation**

<b>Item</b>	<b>Part No</b>	<b>Rem Qty</b>	<b>Description</b>	<b>Code</b>
10		1	Decals and documentation ( Page 56 )	

Decals and documentation

19053





**Decals and documentation**

<b>Item</b>	<b>Part No</b>	<b>Rem</b>	<b>Qty</b>	<b>Description</b>	<b>Code</b>
1	4700394153		2	Decal "DYNAPAC"	
2	4700379424		1	Decal "DYNAPAC"	
3	4812070001		1	Decal "MODEL CODE"	
4	4700284285		1	Decal	
5	4700281898		1	Decal "Ear protection"	
6	4700904680		1	Decal "Read instruction manual"	
8	4700903832		1	Safety decal	
9	4700357587		2	Decal "LIFT POINT"	D
10	4700791296		1	Decal "Sound power level"	
11	4700284278		2	Decal	
13	4700904785		1	Safety decal	
14	4700272373		1	Decal "HYDRAULIC OIL"	D
15	4700908229		1	Safety decal	D
16	4700991658	A	1	Decal "FUEL"	D
	4700381371	B	1	Decal "FUEL"	

- A) For Lombardini  
B) For Honda

