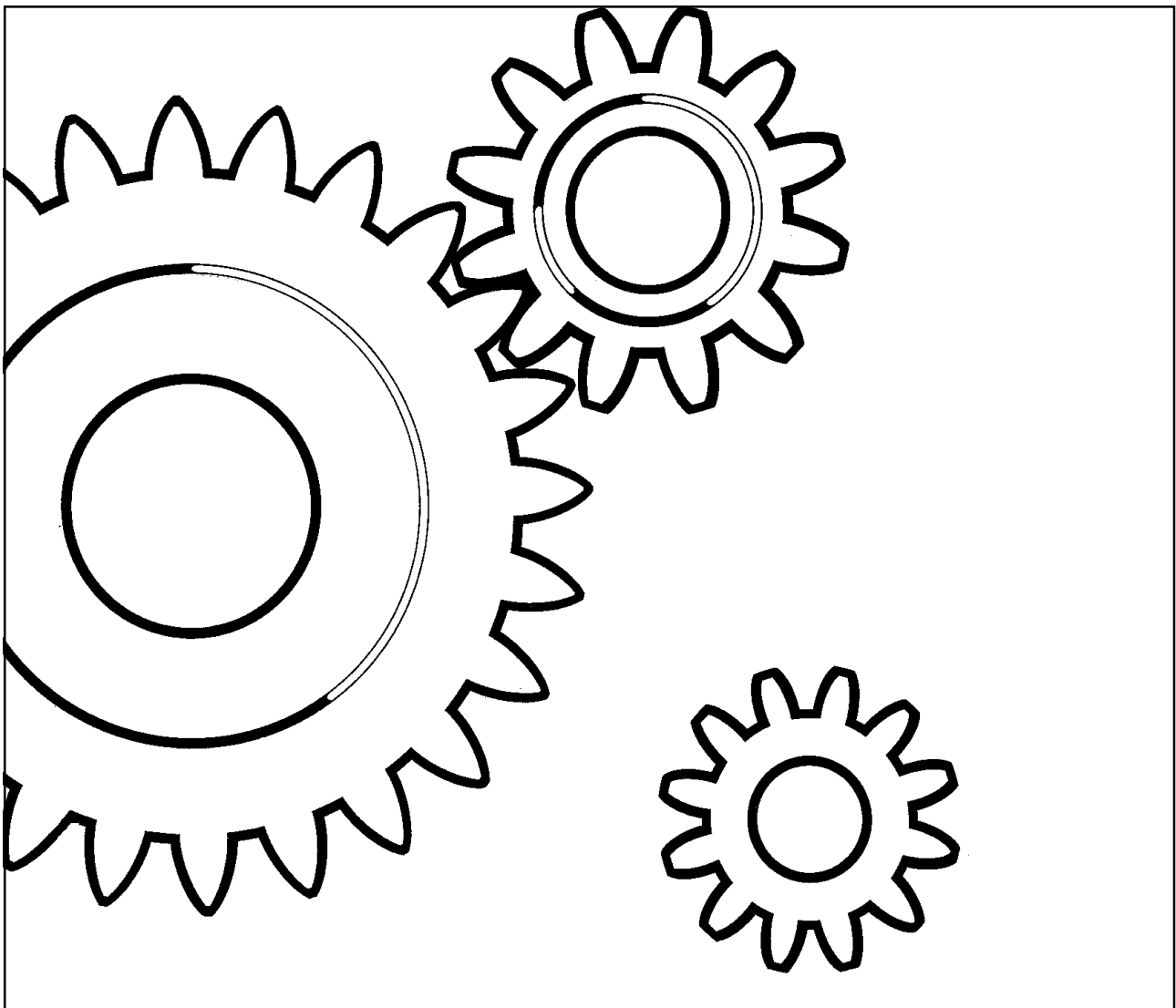


**DYNAPAC**  
**LF80**

**SPARE PARTS**  
**CATALOGUE**  
SLF080-1EN2



***DYNAPAC***

Part of the Atlas Copco Group

Atlas Copco Construction Tools AB

SE-105 23 Stockholm, Sweden



## **LF80**

### **Spare Parts Catalogue SLF080-1EN2**

*Valid from serial number:*

*\*27600001\*-*

*Engines:*

*Honda GX160*

*Robin EX17*

*Published catalogue issues valid for these plate compactors:*

<i>Catalogue</i>	<i>Issue date</i>	
<i>SLF080-1EN1</i>	<i>2008 - 12</i>	<i>Replaced by SLF080-1EN2</i>
<i>SLF080-1EN2</i>	<i>2009 - 04</i>	



**RESERVDLSBESTÄLLNING**

Följande uppgifter ska lämnas vid beställning av reservdelar för att undvika leveransfel:

1. Maskintyp.
2. Vältens serienummer.
3. Antal av önskad reservdel.
4. Reserdelens artikelnummer.
5. Reservdelens benämning.
6. Måttuppgifter vid beställning av metervara.

**ERSATZTEILBESTELLUNG**

Zur Vermeidung von Fehllieferungen sind bei der Bestellung von Ersatzteilen folgende Angaben zu machen:

1. Maschinentyp.
2. Herstellungsnummer.
3. Bestellmenge. (Quantity)
4. Ersatzteilnummer. (Part N°)
5. Ersatzteilbenennung. (Denomination)
6. Massangaben bei Bestellung von Meterware.

**PEDIDO DE RECAMBIOS**

Para evitar errores en las entregas, deberán indicarse los siguientes datos al hacer un pedido de recambios:

1. Tipo de máquina.
2. Número de serie.
3. Cantidad de piezas deseadas. (Quantity)
4. Número de artículo de la pieza de recambio. (Part N°)
5. Denominación de la pieza. (Denomination)
6. Indíquese la medida al solicitar un artículo que se expide por metros.

**ORDERING SPARE PARTS**

To avoid errors in delivery, please give the following information when ordering spare parts:

1. Type of machine.
2. Roller serial number.
3. Quantity required.
4. Part number.
5. Parts denomination.
6. Dimensions when ordering per length.

**ORDINI DI RICAMBI**

Per evitare errori nelle consegne di ricambi, Vi preghiamo di comunicarci le seguenti informazioni al momento dell'ordinazione:

1. Tipo di macchina.
2. Numero di serie della macchina.
3. Quantità dei pezzi desiderati. (Quantity)
4. Numero di codice del pezzo. (Part N°)
5. Descrizione del pezzo di ricambio. (Denomination)
6. Misura, in caso di ordine per metro.

**COMMANDE DE PIÉCES DE RECHANGE**

Les indications suivantes doivent être fournies lors de la commande de pièces de rechange, afin d'éviter toute erreur de livraison:

1. Type de machine.
2. Numéro de série.
3. Quantité désirée de pièce de rechange. (Quantity)
4. Numéro de la pièce de rechange. (Part N°)
5. Dénomination de la pièce de rechange. (Denomination)
6. Longueur en cas de commande au mètre.

**YOUR AGENT/DEALER:**





## PÄRMETIKETT

För att undvika fel vid reservdelsbeställning finns här nedan två etiketter som passar i fickorna på pärmarnas ryggar. På dessa kan man se från vilket vältnummer av aktuell maskin reservdelskatalogen gäller. Gör så här:

1. Tag denna sida ur pärmen.
2. Klipp ut etiketten till **VÄNSTER** (1) och sätt in den i fickan på **DENNA** pärmens rygg.
3. Finns det en etikett till **HÖGER** (2), kan denna användas på pärmen för **FÖREGÅENDE** utgåva av denna katalog.
4. Kasta detta papper.

## KATALOG-BESCHRIFTUNG

Zur Vermeidung von Fehlern bei der Ersatzteilbestellung benutzen Sie bitte die unteren Beschriftungen, um die Kataloge auf der Rückseite zu kennzeichnen. Auf der Beschriftung ist angegeben, für welche Maschinennummern der jeweilige Katalog gültig ist. Ablauf:

1. Nehmen Sie dieses Blatt aus dem Katalog.
2. Schneiden Sie die **LINKE** Beschriftung (1) aus. Schieben Sie die Beschriftung in die tasche auf **DEM** Katalogrücke.
3. Sollte die Beschriftung unten **RECHTS** (2) mitgeliefert werden, kennzeichnen Sie damit bitte die **ÄLTERE** Ausführung dieses Kataloges.
4. Den Rest dieses Blattes bitte vernichten.

## ETIQUETA PARA LA CARPETA

Para evitar errores al pedir repuestos utilicen las etiquetas abajo descritas para identificar los catálogos en la parte trasera de la carpeta. En la etiqueta se ven los números de referencia de la serie para la cual es válido el catálogo. Instrucciones:

1. Quitar esta página de la carpeta.
2. Corta la etiqueta **IZQUIERDA** (1) y ponerla en **ESTA** carpeta en la parte trasera.
3. Si hay una etiqueta en la parte **DERECHA** (2) se puede utilizar en la carpeta para el catálogo que **PRECEDE** a esta.
4. Tirar esta hoja.

## BINDER LABEL

To avoid errors when ordering spare parts use the labels below to identify the catalogues on the back of the binder. The label contain the serial number range for which the catalogue is valid. Do like this:

1. Remove this page from the binder.
2. Cut out the **LEFT** label (1) and put it on **THIS** binders back.
3. If there is a label to the **RIGHT** (2), it can be used on the binder for **PRECEDING** issue of this catalogue.
4. Throw away this paper.

## ETICHETTAPOSTASULRACCOGLITORE

Per evitare errori quando ordinate pezzi di ricambio, usate le etichette in calce che servono ad identificare i cataloghi sul retro del raccoglitore. L'etichetta indica il numero di matricola delle macchine prese in considerazione nel catalogo.

1. Rimuovete questa pagina dal raccoglitore.
2. Ritagliate l'etichetta posta a **SINISTRA** (1) e ponetela sul retro **DEL** raccoglitore.
3. Se trovate anche un'etichetta sulla **DESTRA** (2), ritagliatela e ponetela sul raccoglitore relativo alla **PRECEDENTE** edizione del catalogo.
4. Distruggete questo foglio.

## ETIQUETAGE DU CATALOGUE

Afin d'éviter des erreurs lors de commandes de pièces de rechange, nous vous conseillons d'apposer les marquages ci-dessous à l'arrière du classeur, pour identifier les catalogues. Ce marquage indique les numéros de série pour lesquels le catalogue est adapté. Il convient de procéder de la façon suivante:

1. Retirez cette page du classeur.
2. Découpez l'étiquette de **GAUCHE** (1), et apposez-la à l'arrière de **CE** catalogue.
3. Si il y a une étiquette à **DROITE** (2), vous pourrez l'apposer sur le classeur de l'édition **PRECEDENTE** du catalogue.
4. Détruire cette feuille.

1.







<b>LF80 From SN: 27600001</b> .....	<b>2</b>
<b>Engine plate, and eccentric element</b> .....	<b>4</b>
Main assy, overview .....	6
Engine plate installation Honda, Robin .....	8
Ground plate installation .....	10
Protective frame, Honda, Robin Option .....	12
Lifting handle Option .....	14
Lifting eye, Honda, Robin Option .....	16
Transport device installation Option .....	18
Transport wheel Option .....	20
Weight Option .....	22
Sprinkler system Option .....	24
Block paving kit, widht=420mm Option .....	26
Fork lifting device Option .....	28
<b>Eccentric element</b> .....	<b>30</b>
Eccentric element .....	32
Cover, right side .....	34
Cover, left side .....	36
<b>Engine and engine installation</b> .....	<b>38</b>
Engine installation .....	40
Engine Honda GX160K1SX .....	42
Engine installation Robin .....	44
Engine Robin EX17 .....	46
<b>Power transmission</b> .....	<b>48</b>
Transmission cover Honda, Robin .....	50
<b>Handle</b> .....	<b>52</b>
Handle Standard .....	54
Vibration damped handle Option .....	56
<b>Decals and documentation</b> .....	<b>58</b>
Decals and documentation .....	60



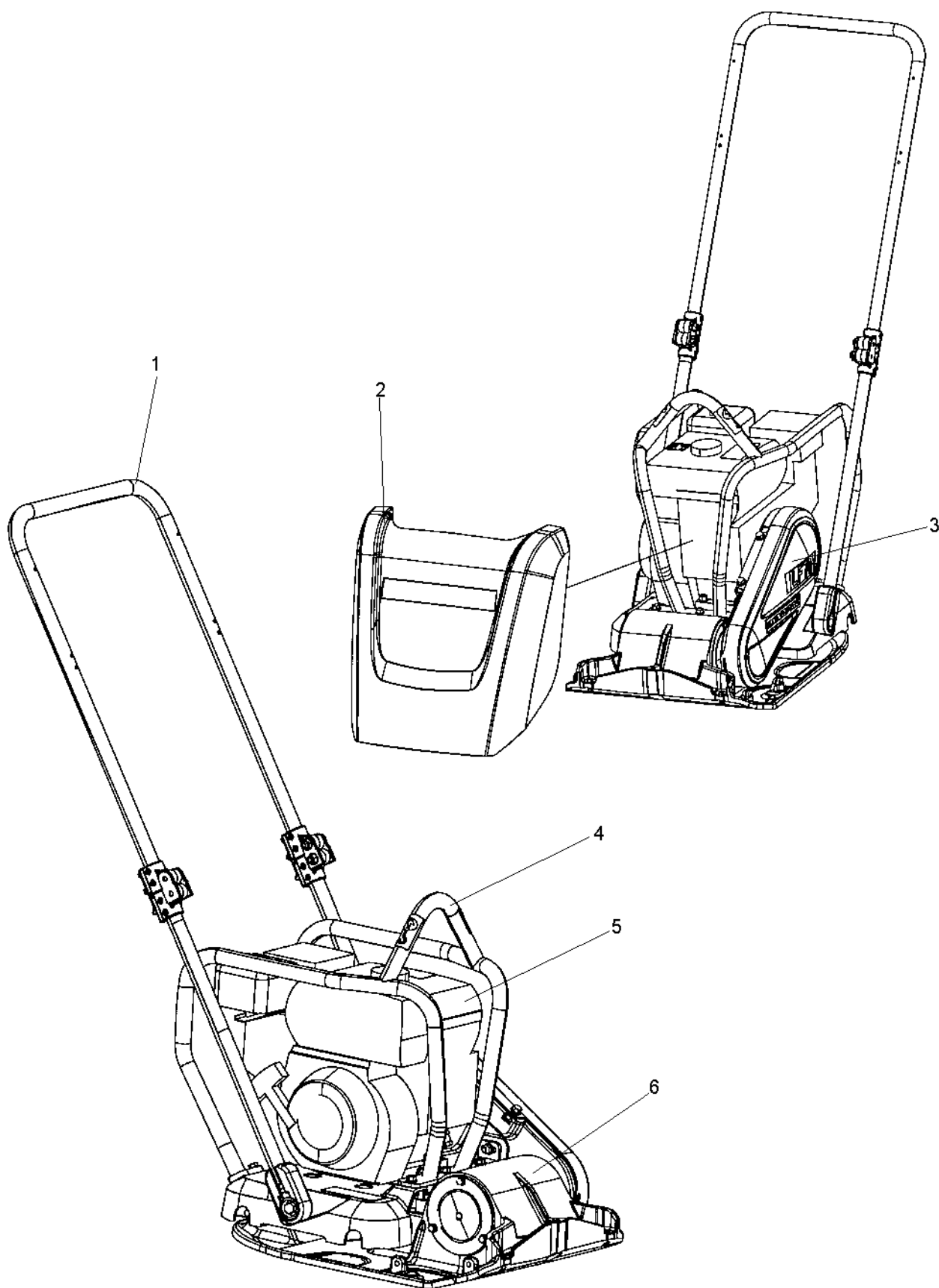
**LF80 From SN: 27600001**

<b>Item</b>	<b>Part No</b>	<b>Rem Qty</b>	<b>Description</b>	<b>Code</b>
10		1	Engine plate, and eccentric element ( Page 4 )	
20		1	Eccentric element ( Page 30 )	
30		1	Engine and engine installation ( Page 38 )	
40		1	Power transmission ( Page 48 )	
70		1	Handle ( Page 52 )	
80		1	Decals and documentation ( Page 58 )	



**Engine plate, and eccentric element**

<b>Item</b>	<b>Part No</b>	<b>Rem Qty</b>	<b>Description</b>	<b>Code</b>
10		1	Main assy, overview ( Page 6 )	
20		1	Engine plate installation Honda, Robin ( Page 8 )	
40		1	Ground plate installation ( Page 10 )	
50		1	Protective frame, Honda, Robin ( Page 12 )	Option
60		1	Lifting handle ( Page 14 )	Option
70		1	Lifting eye, Honda, Robin ( Page 16 )	Option
90		1	Transport device installation ( Page 18 )	Option
100		1	Transport wheel ( Page 20 )	Option
110		1	Weight ( Page 22 )	Option
120		1	Sprinkler system ( Page 24 )	Option
130		1	Block paving kit, widht=420mm ( Page 26 )	Option
140		1	Fork lifting device ( Page 28 )	Option

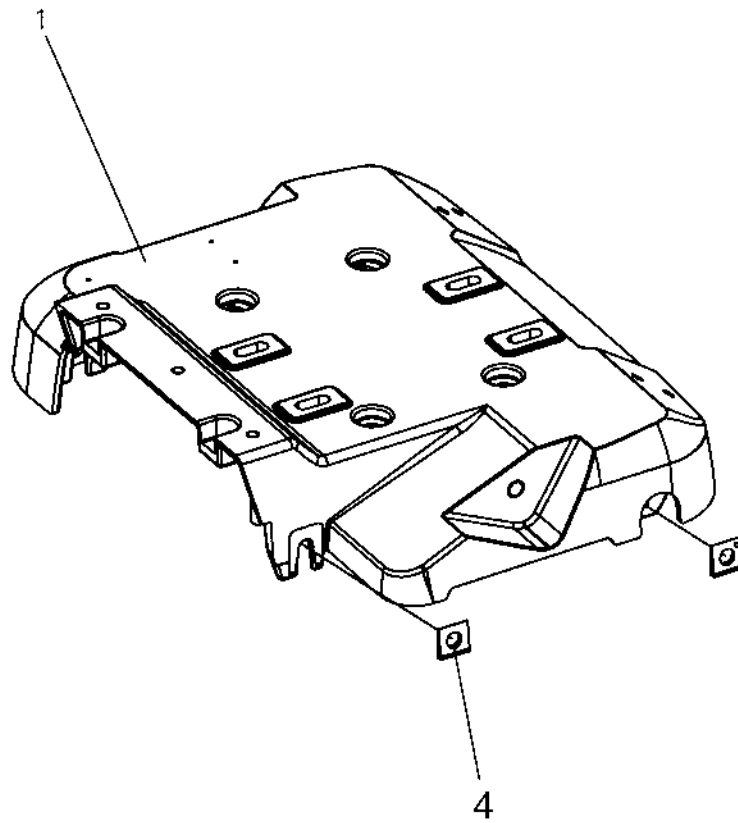


**Main assy, overview**

<b>Item</b>	<b>Part No</b>	<b>Rem Qty</b>	<b>Description</b>	<b>Code</b>
1			Handle ( Page 52 )	
2	D393040-02	1	Cover	Honda, Robin
3			Power transmission ( Page 48 )	
4			Engine plate, and eccentric element ( Page 4 )	
5			Engine and engine installation ( Page 38 )	
6			Eccentric element ( Page 30 )	

**Engine plate installation Honda, Robin**

18620-1



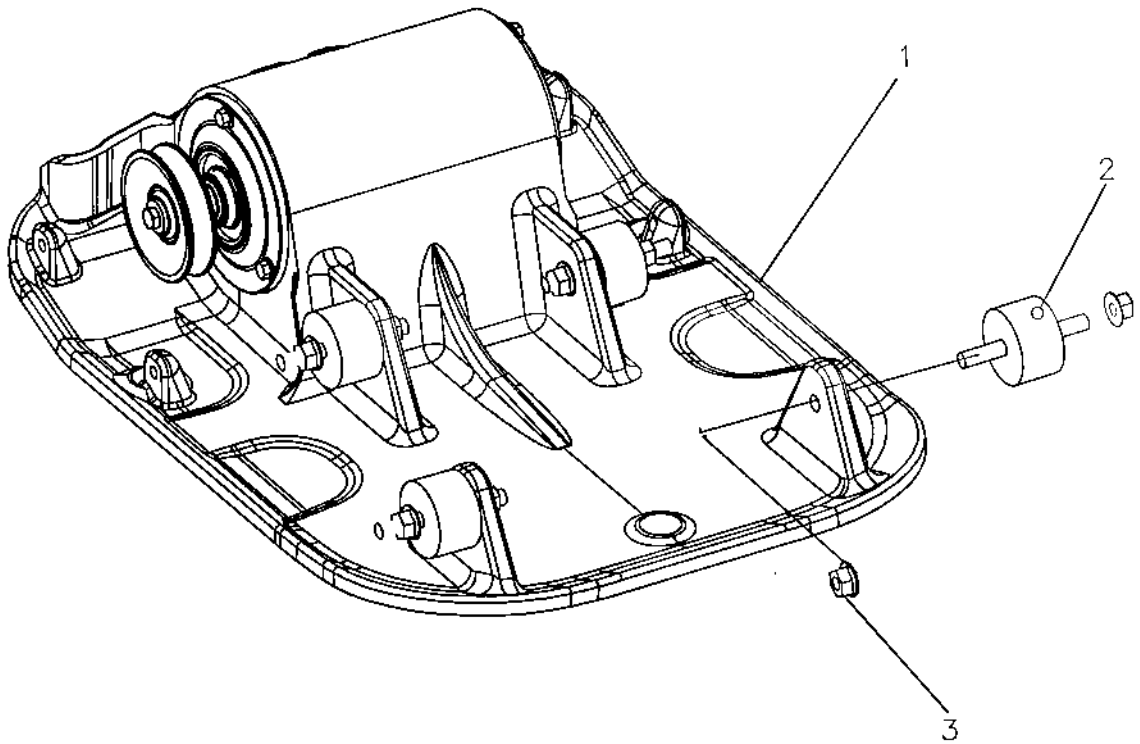


**Engine plate installation Honda, Robin**

<b>Item</b>	<b>Part No</b>	<b>Rem Qty</b>	<b>Description</b>	<b>Code</b>
1	D393823-01	1	Engine plate	
4	4700792725	4	Square taper washer	

**Ground plate installation**

18609

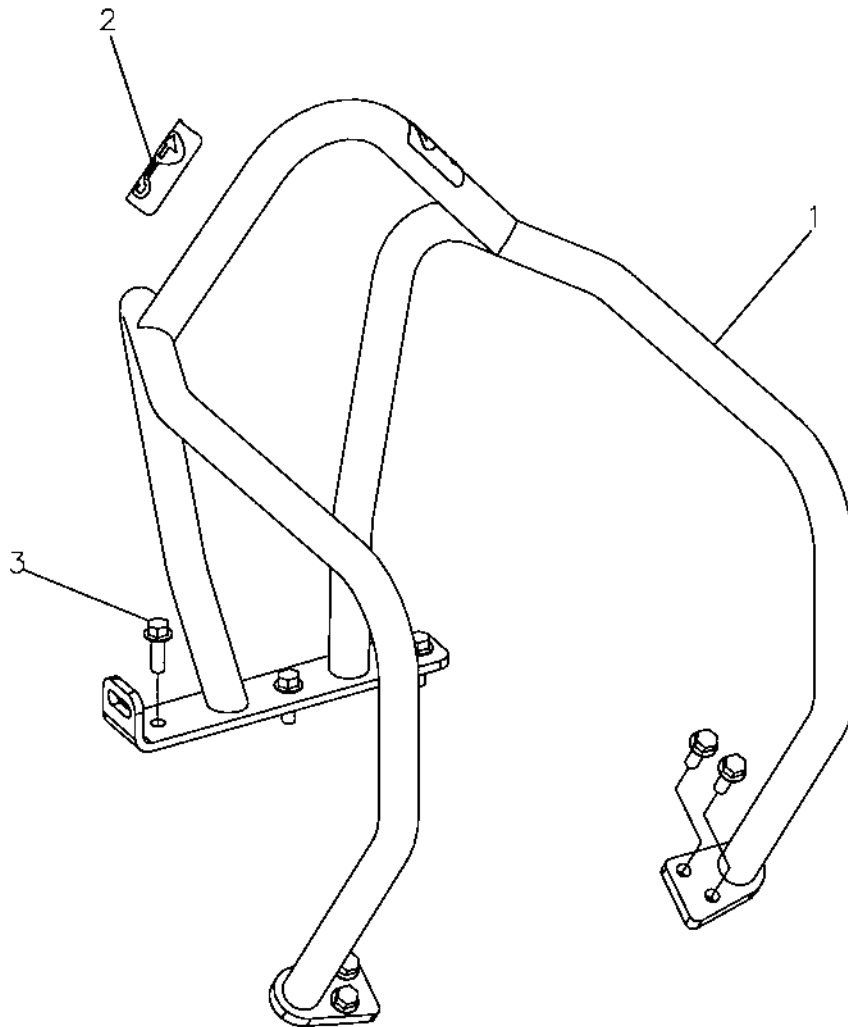


**Ground plate installation**

<b>Item</b>	<b>Part No</b>	<b>Rem Qty</b>	<b>Description</b>	<b>Code</b>
1		1	Eccentric element ( Page 32 )	
2	4700282373	4	Shock absorber	
3	4700570103	8	Nut	M10

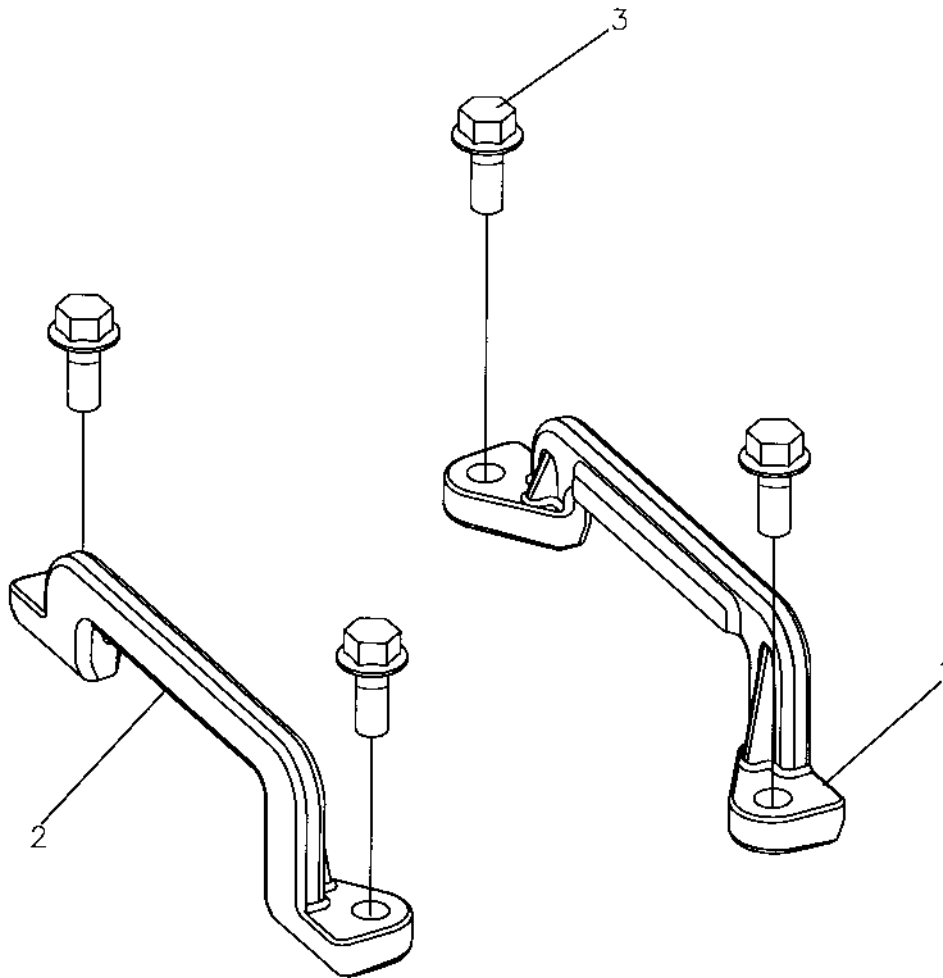
Protective frame, Honda, Robin Option

18613



**Protective frame, Honda, Robin Option**

<b>Item</b>	<b>Part No</b>	<b>Rem Qty</b>	<b>Description</b>	<b>Code</b>
1	D392920-03	1	Protective frame	
2	4700281269	2	Decal "LIFT"	
3	4700902041	7	Screw	

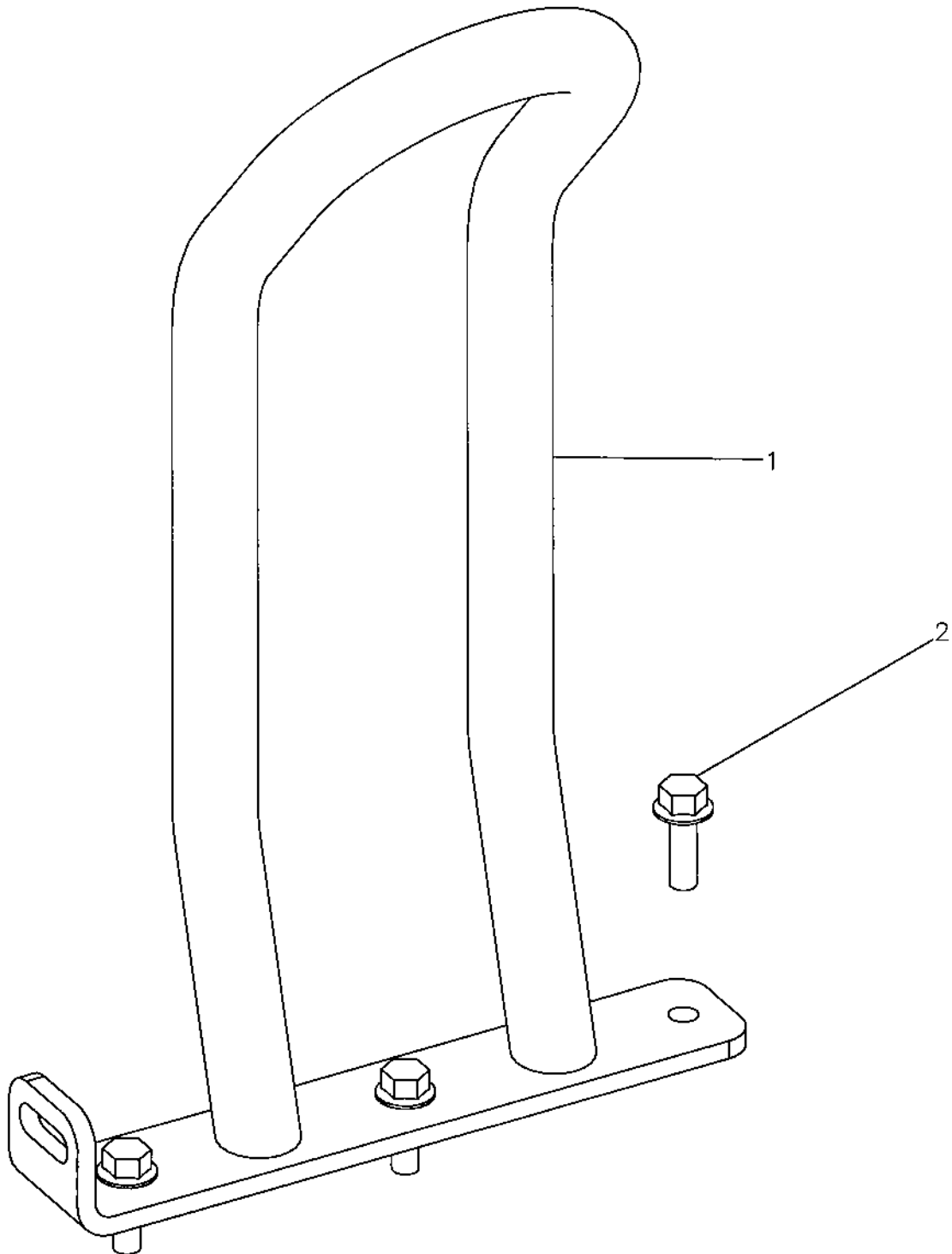


**Lifting handle Option**

Item	Part No	Rem Qty	Description	Code
1	4700395018	1	Handle, right	
2	4700395020	1	Handle, left	
3	4700500505	4	Screw	M8x20 8.8

Lifting eye, Honda, Robin Option

18623



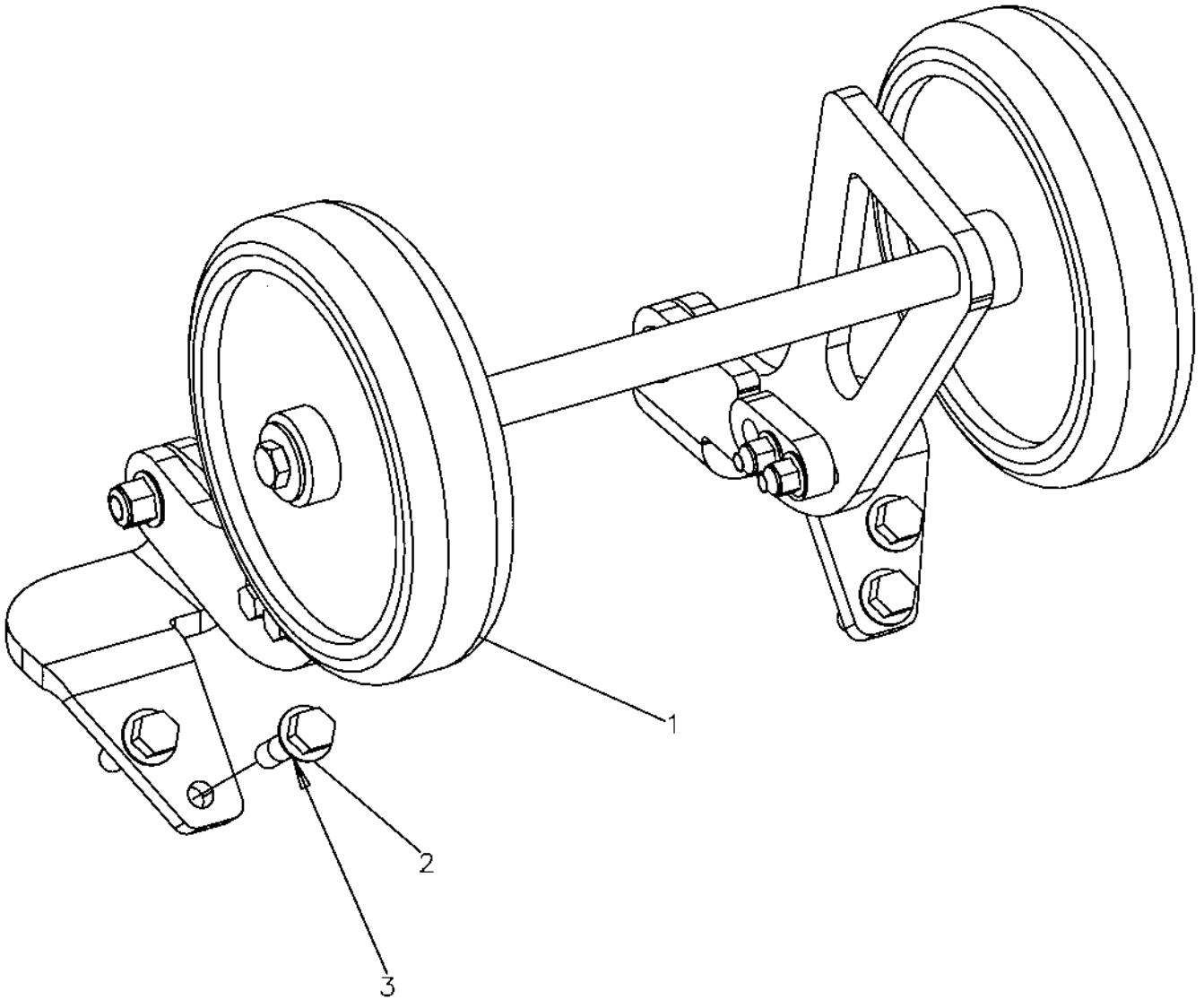


**Lifting eye, Honda, Robin Option**

<b>Item</b>	<b>Part No</b>	<b>Rem Qty</b>	<b>Description</b>	<b>Code</b>
1	D396963-03	1	Lifting eye	
2	4700902041	3	Screw	

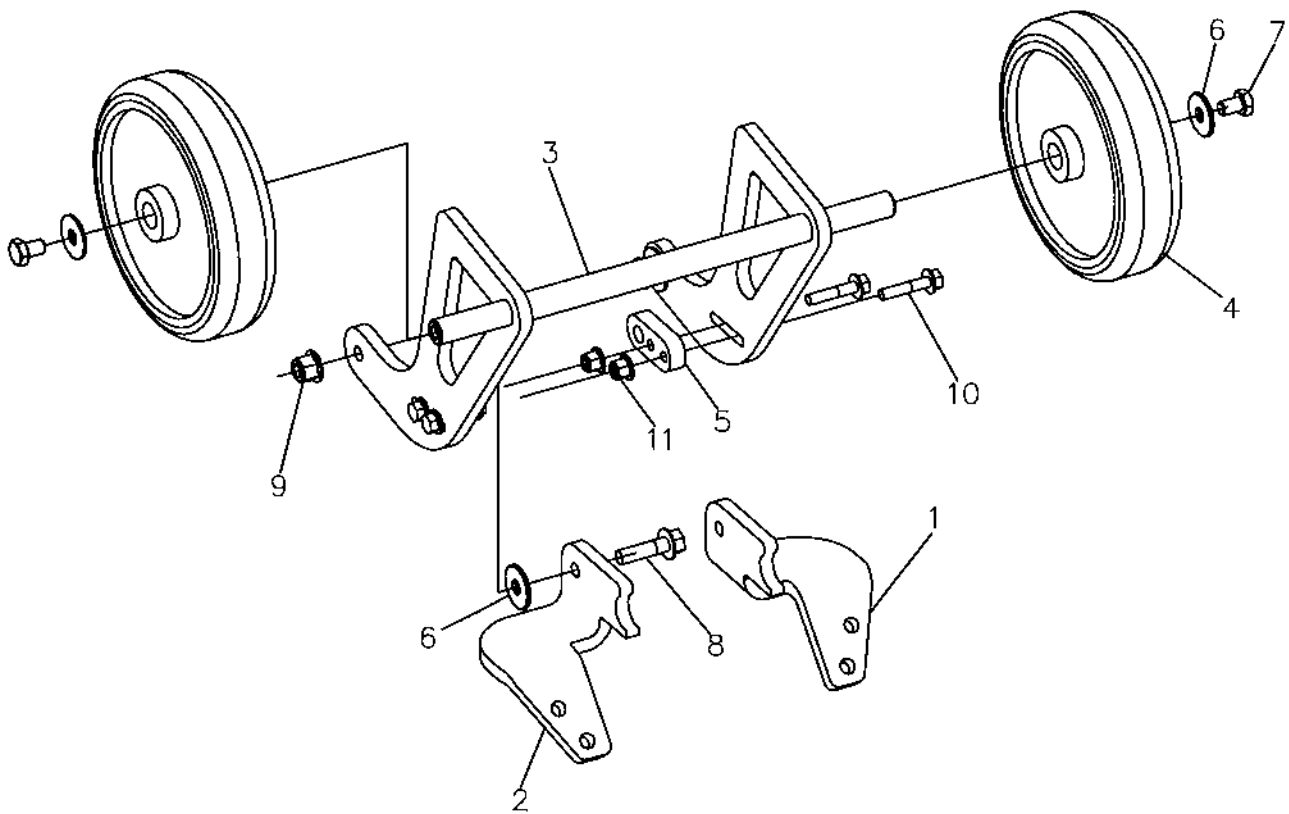
Transport device installation Option

18615



**Transport device installation Option**

<b>Item</b>	<b>Part No</b>	<b>Rem Qty</b>	<b>Description</b>	<b>Code</b>
1		1	Transport wheel ( Page 20 )	Option
2	4700500505	4	Screw	M8x20 8.8
3	4700500506	4	Screw	

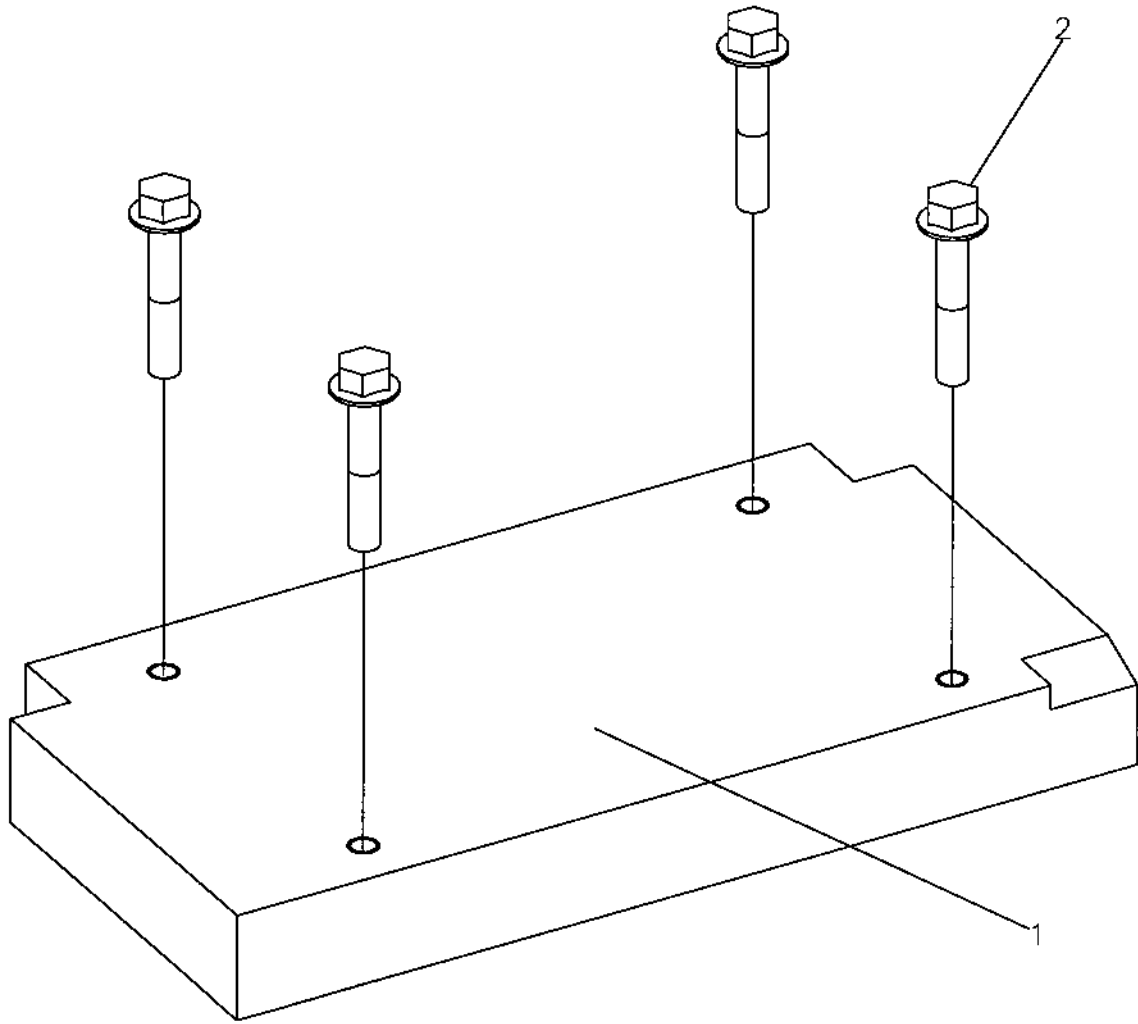


**Transport wheel Option**

<b>Item</b>	<b>Part No</b>	<b>Rem Qty</b>	<b>Description</b>	<b>Code</b>
1	4700393989	1	Bracket, left	
2	4700393990	1	Bracket, right	
3	4700393987	1	Fork	
4	4700383582	2	Wheel	
5	4700394103	2	Lock	
6	4700601003	4	Washer	8,4x25x2
7	4700500018	2	Screw	M8-1,25x12 8,8
8	4700500506	2	Screw	
9	4700902286	2	Lock nut	M8
10	4700500503	4	Screw	
11	4700902285	4	Lock nut	M6

**Weight Option**

18622

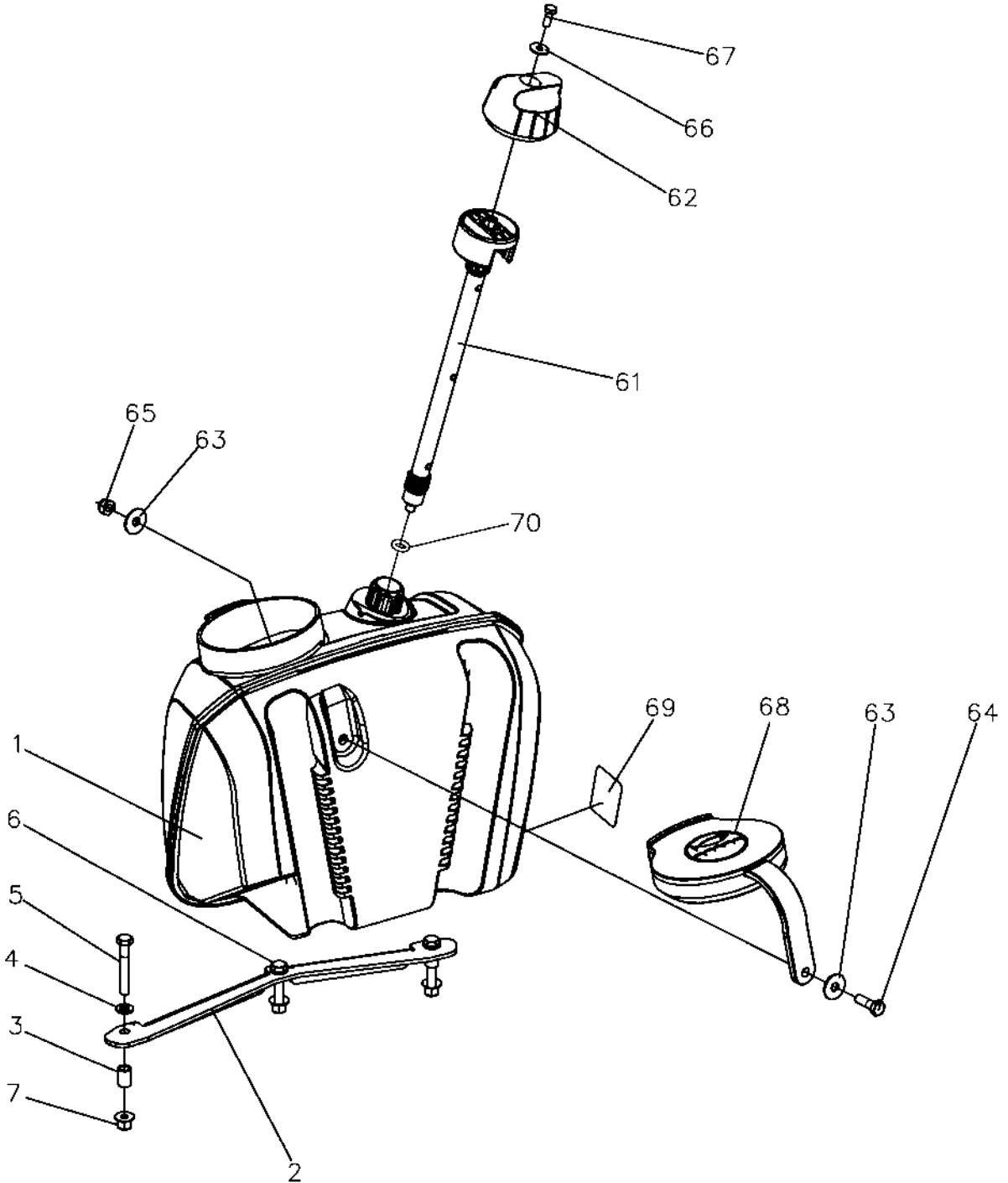


**Weight Option**

Item	Part No	Rem Qty	Description	Code
1	4812070085	1	Weight	
2	4700500508	4	Screw	

**Sprinkler system Option**

18624-2





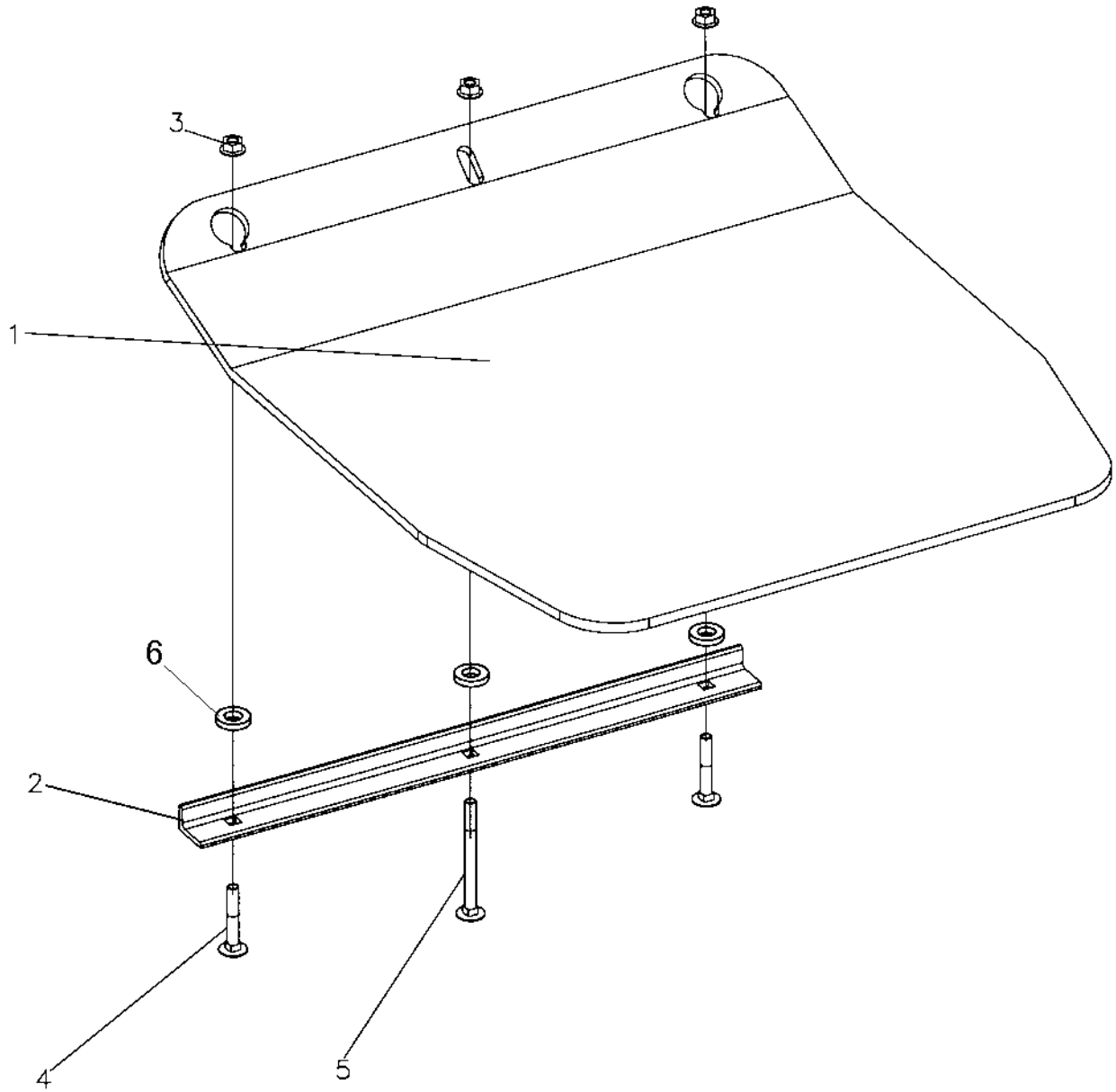
**Sprinkler system Option**

Item	Part No	Rem	Qty	Description	Code
1	D392815-02		1	Water tank	
2	4700396178	A	1	Sprinkler bar	
	4700396177	B	1	Sprinkler bar	
3	4700396180		2	Spacer	
4	4700904229		3	Washer	8,4x16x1,5
5	4700500067		2	Screw	M8-1,25x55 8,8
6	4700500024		1	Screw	M8x45
7	4700902286		3	Lock nut	M8
61	4700393020		1	Valve rod	
62	4700392073		1	Handle	
63	4700601003		2	Washer	8,4x25x2
64	4700500021		1	Screw	M8-1,25x25 8.8
65	4700791182		1	Lock nut	M8
66	4700928381		1	Washer	6,4x18x1,6
67	4700500013		1	Screw	M6-1x16 8,8
68	4700392092		1	Cap	
69	4700393381		1	Decal	
70	4700792804		1	O-ring	

- A) Widht 420 mm
- B) 500 mm

**Block paving kit, width=420mm Option**

18752-1

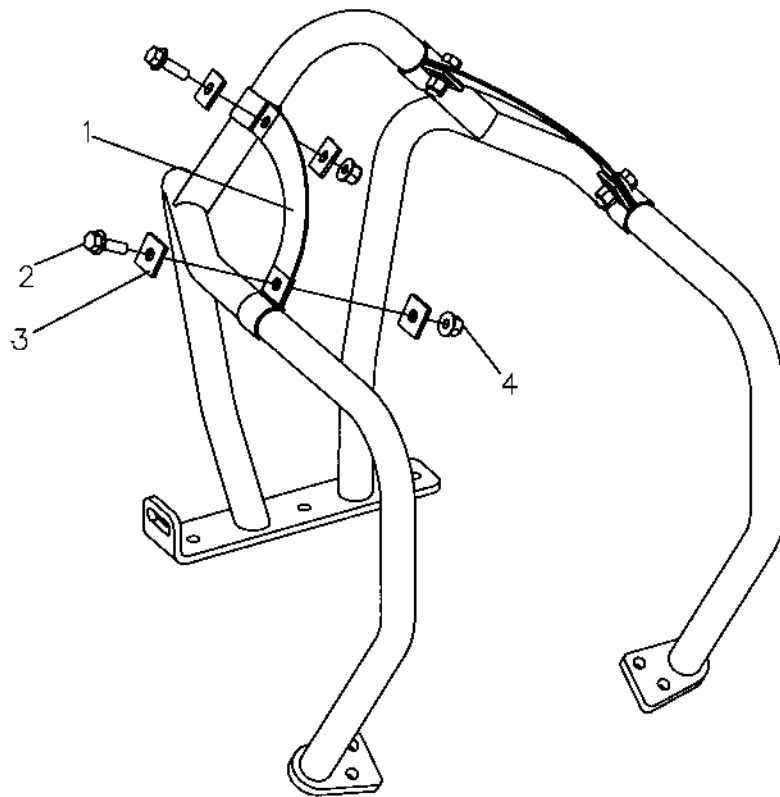


**Block paving kit, width=420mm Option**

Item	Part No	Rem Qty	Description	Code
1	4700394043	1	Polyurethane plate	
2	4700394044	1	Bracket	
3	4700570102	3	Nut	M8
4	4700500026	2	Screw	M8-1,25x60 8,8
5	4700500096	1	Screw	
6	4700904556	6	Washer	8,4x16x3,0

Fork lifting device Option

18753



Fork lifting device Option

Item	Part No	Rem Qty	Description	Code
1	4700396194	2	Lifting eye	
2	4700902041	4	Screw	
3	4700615103	8	Screw	
4	4700902286	4	Lock nut	M8

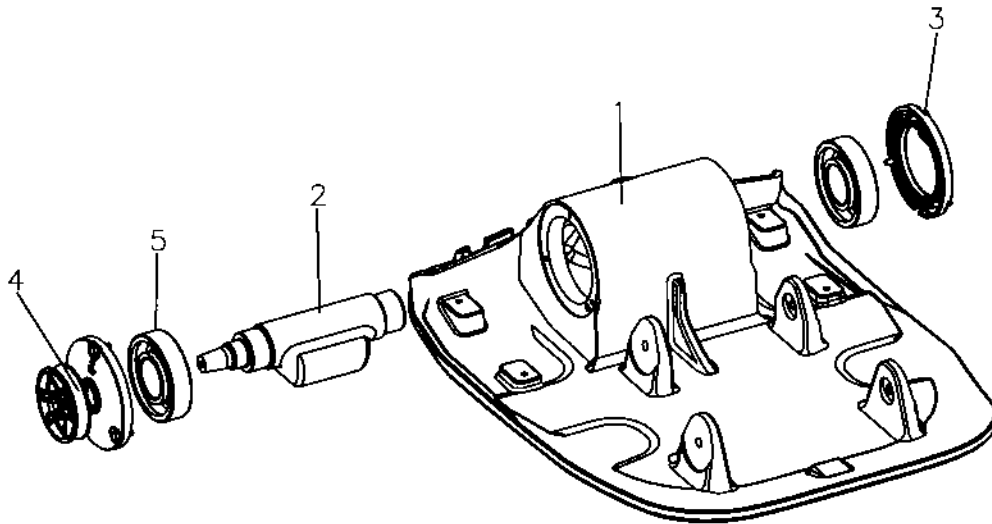


**Eccentric element**

<b>Item</b>	<b>Part No</b>	<b>Rem Qty</b>	<b>Description</b>	<b>Code</b>
1		1	Eccentric element ( Page 32 )	
2		1	Cover, right side ( Page 34 )	
3		1	Cover, left side ( Page 36 )	

**Eccentric element**

18610-1



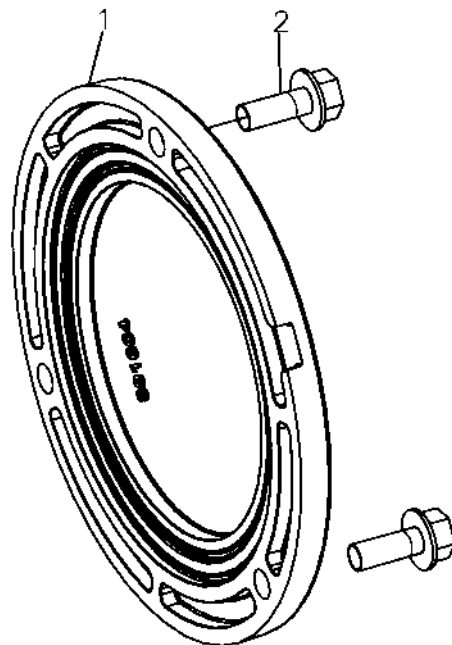


**Eccentric element**

<b>Item</b>	<b>Part No</b>	<b>Rem Qty</b>	<b>Description</b>	<b>Code</b>
1	D392200-03	1	Ground plate	
2	4700392216	1	Eccentric shaft	
3		1	Cover, right side ( Page 34 )	
4		1	Cover, left side ( Page 36 )	
5	4700792711	2	Ball bearing	

**Cover, right side**

18602-1

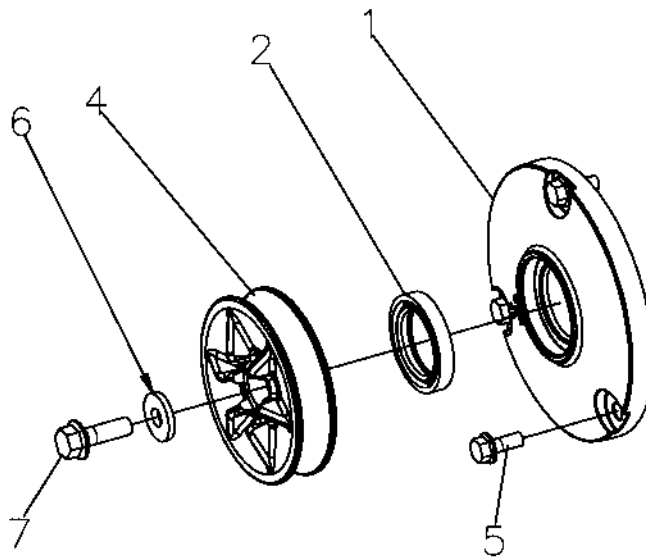


**Cover, right side**

Item	Part No	Rem Qty	Description	Code
1	4700396549	1	Cover	
2	4700792119	3	Screw	
		1		

**Cover, left side**

**18601-2**



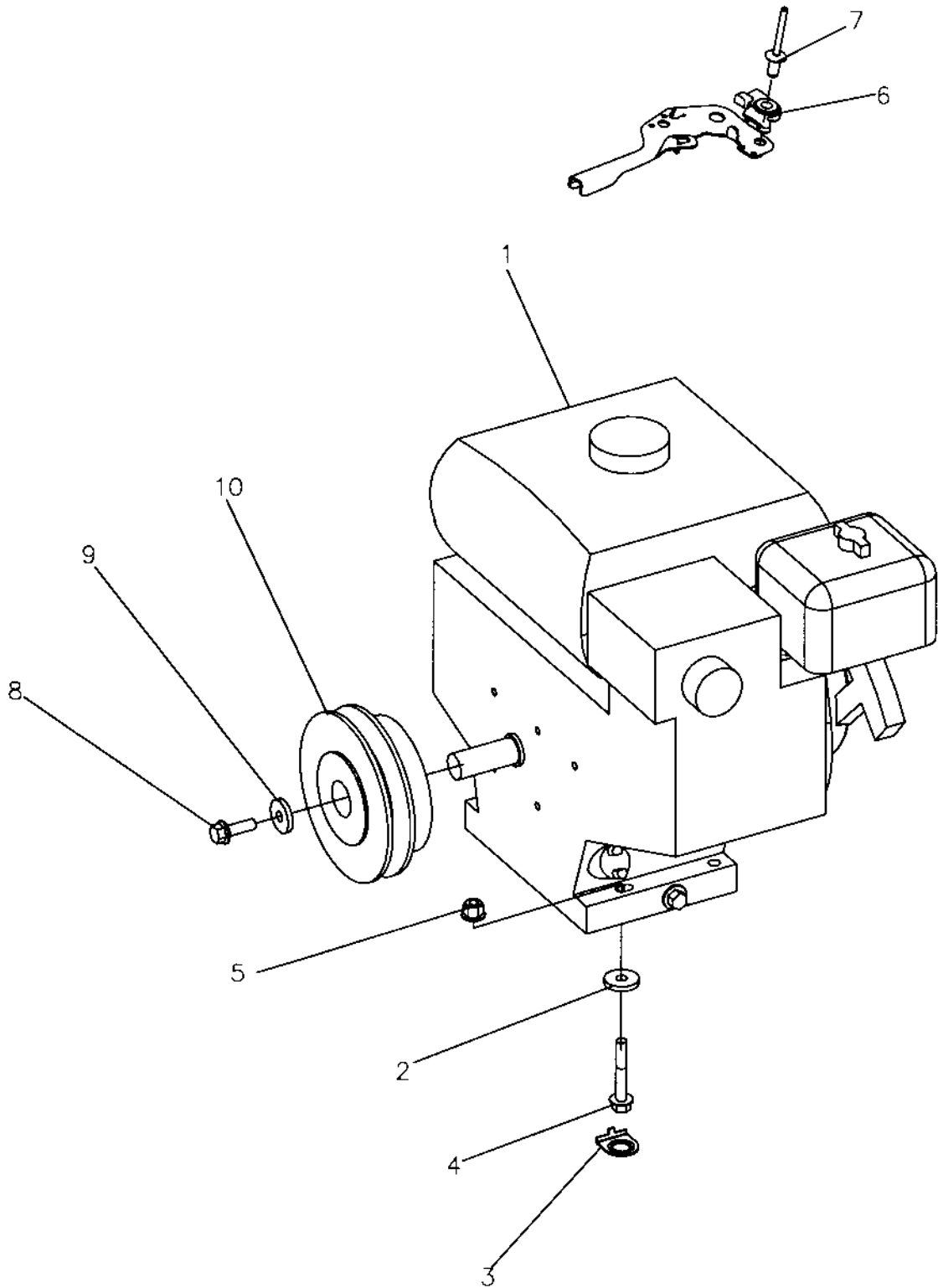
**Cover, left side**

Item	Part No	Rem Qty	Description	Code
1	4700396548	1	Cover	
2	4700163105	1	Lip-type oil seal	
4	4700395013	1	V-belt pulley	
5	4700792119	3	Screw	
6	4700904640	1	Washer	8,4x22x3
7	4700902041	1	Screw	



**Engine and engine installation**

<b>Item</b>	<b>Part No</b>	<b>Rem Qty</b>	<b>Description</b>	<b>Code</b>
10		1	Engine installation ( Page 40 )	
30		1	Engine ( Page 42 )	Honda GX160K1SX
50		1	Engine installation ( Page 44 )	Robin
60		1	Engine ( Page 46 )	Robin EX17



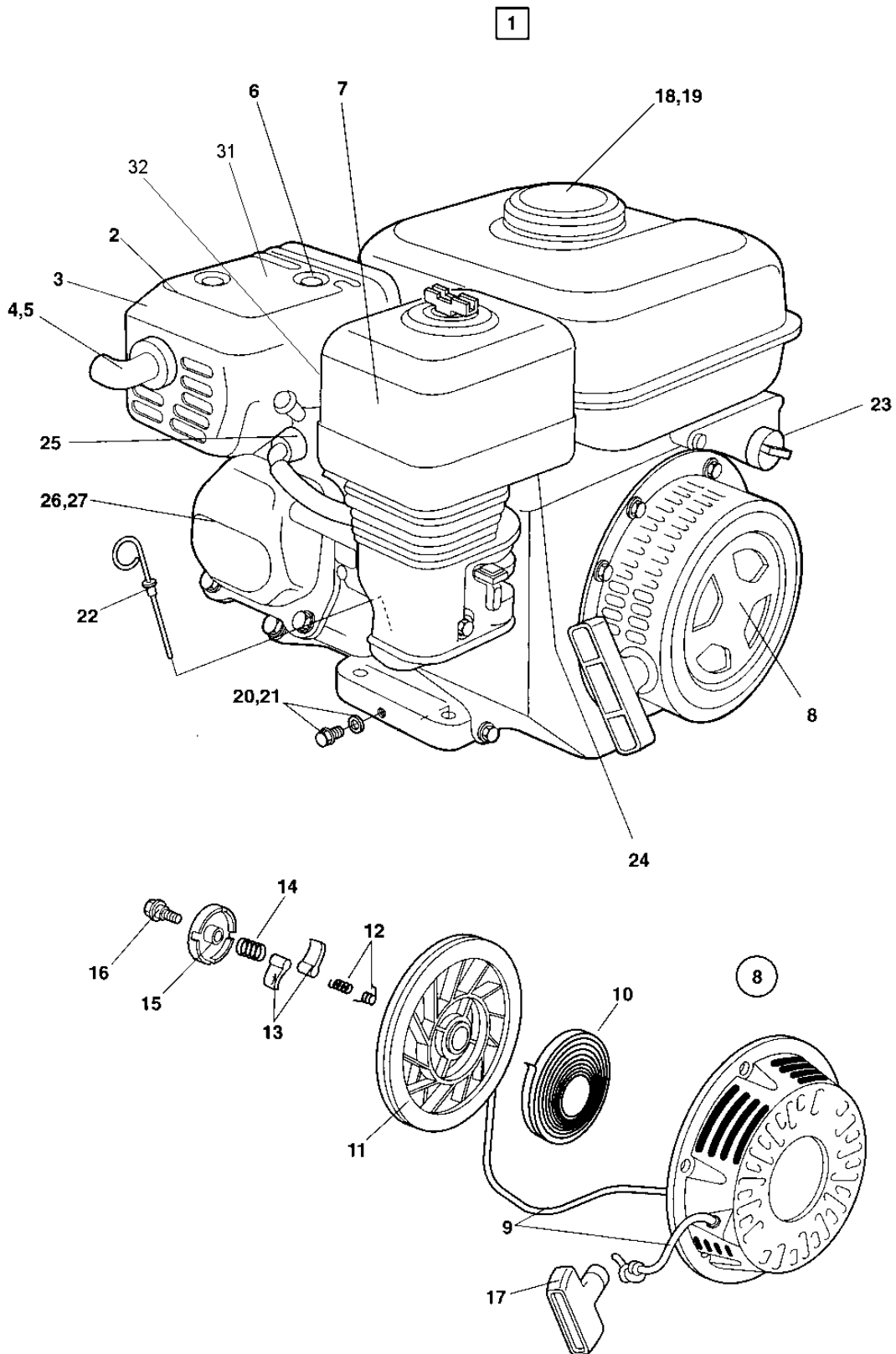


**Engine installation**

<b>Item</b>	<b>Part No</b>	<b>Rem Qty</b>	<b>Description</b>	<b>Code</b>
1		1	Engine ( Page 42 )	Honda GX160K1SX
2	4700904734	4	Washer	8,4x26x4
3	4700393903	4	Washer	
4	4700500508	4	Screw	
5	4700902286	4	Lock nut	M8
6	4700396126	1	Stiffener	
7	4700792774	1	Blind rivet	
8	4700902041	1	Screw	
9	4700904734	1	Washer	8,4x26x4
10	4700391706	1	Centrifugal clutch	

Engine Honda GX160K1SX

18619



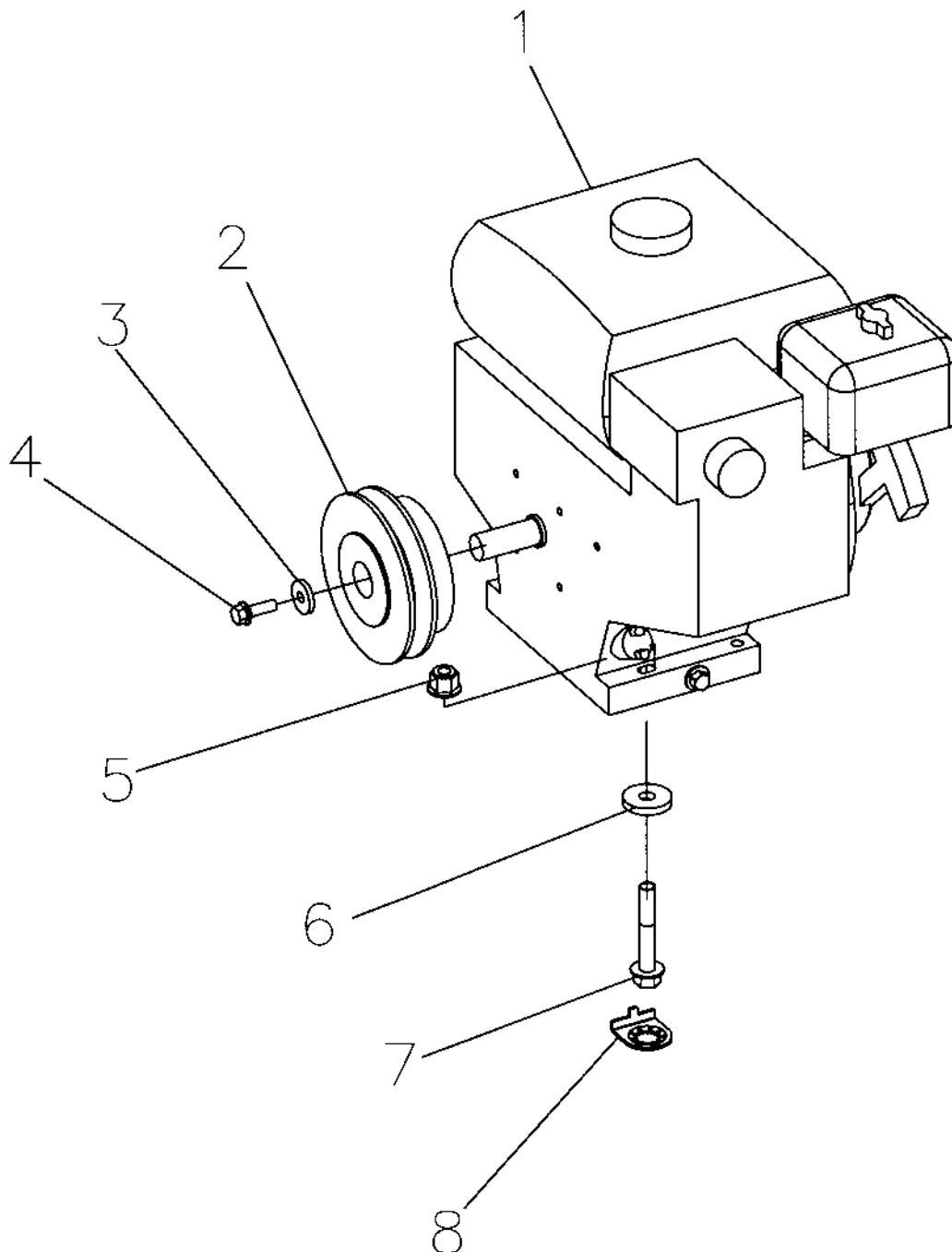
**Engine Honda GX160K1SX**

Item	Part No	Rem	Qty	Description	Code
1	4700281125		1	Petrol engine	
2	4700239059		1	.Muffler	
3	4700239060		1	.Muffler cover, upper	
4	4700239062		1	.Exhaust pipe	
5	4700238322		1	.Arrester, spark	
6	4700239063		1	.Gasket, muffler	
7	4700239323		1	.Air filter, cpl	A
8	4700239065		1	.Recoil starter, cpl	D
9	4700239374		1	..Starter rope	B
10	4700239375		1	..Spring	B
11	4700239376		1	..Reel	
12	4700239377		2	..Spring	
13	4700239378		2	..Ratchet	
14	4700239379		1	..Friction spring	
15	4700239380		1	..Guide	
16	4700239381		1	..Screw	
17	4700239391		1	..Handle	B
18	4700239321		1	.Fuel tank	
19	4700239324		1	.Fuel tank cap	D
20	4700238302		2	.Oil plug	D
21	4700238303		2	.Gasket	D
22	4700238306		1	.Oil plug	D
23	4700239067		1	.Oil alert	
24	4700239325		1	.Carburettor	
25	4700924842		1	.Spark plug	
26	4700238301		1	.Gasket	D
27	4700239664		1	.Gasket, cylinder head	D
32	4700573002	D	1	Nut	M5

D) Locking nut for revolution screw

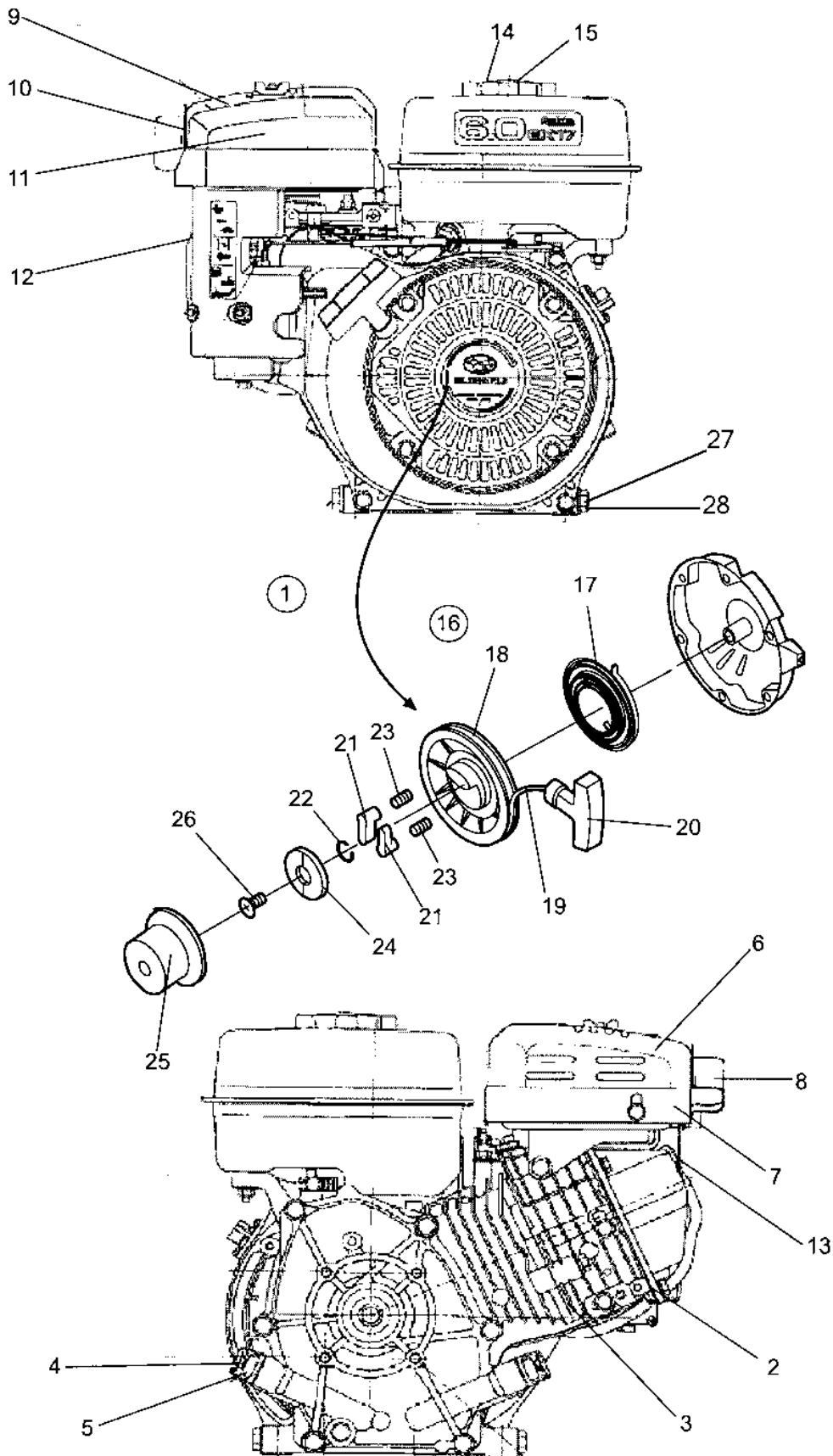
**Engine installation Robin**

18866



**Engine installation Robin**

<b>Item</b>	<b>Part No</b>	<b>Rem Qty</b>	<b>Description</b>	<b>Code</b>
1		1	Engine ( Page 46 )	Robin EX17
2	4700391706		Centrifugal clutch	
3	4700904734	1	Washer	8,4x26x4
4	4700902041	1	Screw	
5	4700902286	4	Lock nut	M8
6	4700904734	4	Washer	8,4x26x4
7	4700500508	4	Screw	
8	4700393903	4	Washer	



**Engine Robin EX17**

<b>Item</b>	<b>Part No</b>	<b>Rem Qty</b>	<b>Description</b>	<b>Code</b>
1	4700396168	1	Engine, cpl	
2	4700950535	1	.Valve cover gasket	
3	4700950536	1	.Cylinder head gasket	
4	4700950537	1	.Oil dipstick	
5	4700910267	1	.O-ring	
6	4700950538	1	.Muffler	
7	4700950539	1	.Cover	
8	4700950540	1	.Deflector	
9	4700950541	1	.Air cleaner, cpl	
10	4700950542	1	.Air filter element	
11	4700950543	1	.Gasket	
12	4700950544	1	.Carburetor	
13	4700950545	1	.Spark plug	
14	4700950546	1	.Filler cap	
15	4700950547	1	.Strainer	
16	4700950548	1	.Recoil starter, cpl	
17	4700950549	1	..Spring	
18	4700950550	1	..Reel	
19	4700950551	1	..Starter rope	
20	4700950436	1	..Handle	
21	4700950437	2	..Ratchet	
22	4700239711	1	..Spring	
23	4700239712	2	..Spring	B
24	4700950439	1	..Guide	
25	4700950552	1	..Holder	
26	4700239715	1	..Screw	
27	4700910268	1	.Oil plug	
28	4700910266	1	.Gasket	



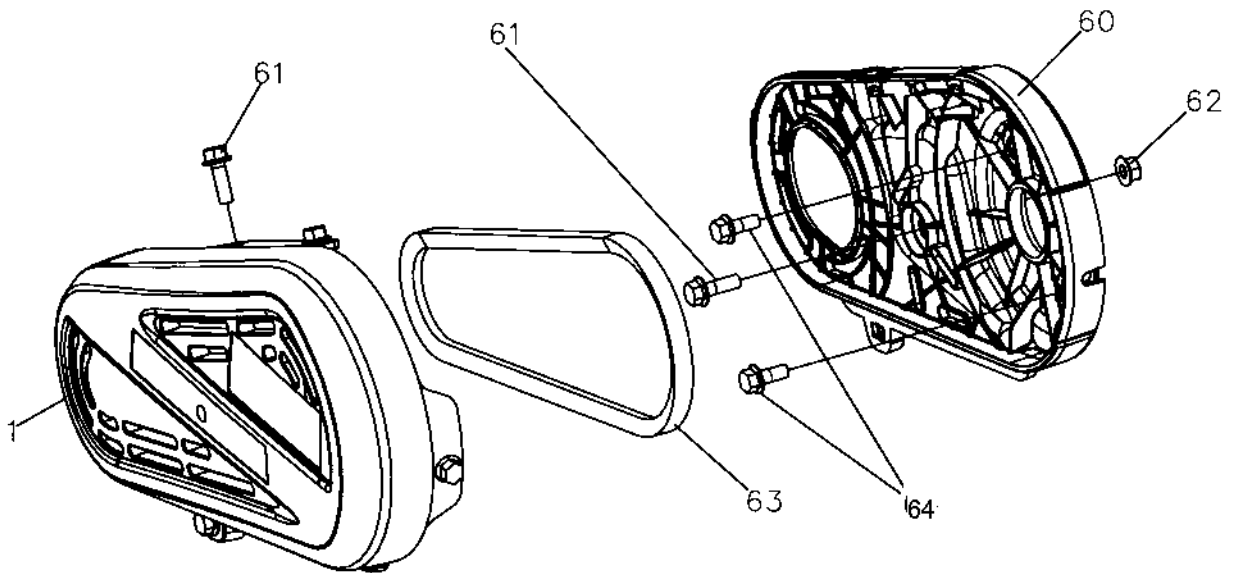


**Power transmission**

<b>Item</b>	<b>Part No</b>	<b>Rem Qty</b>	<b>Description</b>	<b>Code</b>
1		1	Transmission cover Honda, Robin ( Page 50 )	

Transmission cover Honda, Robin

18604-1



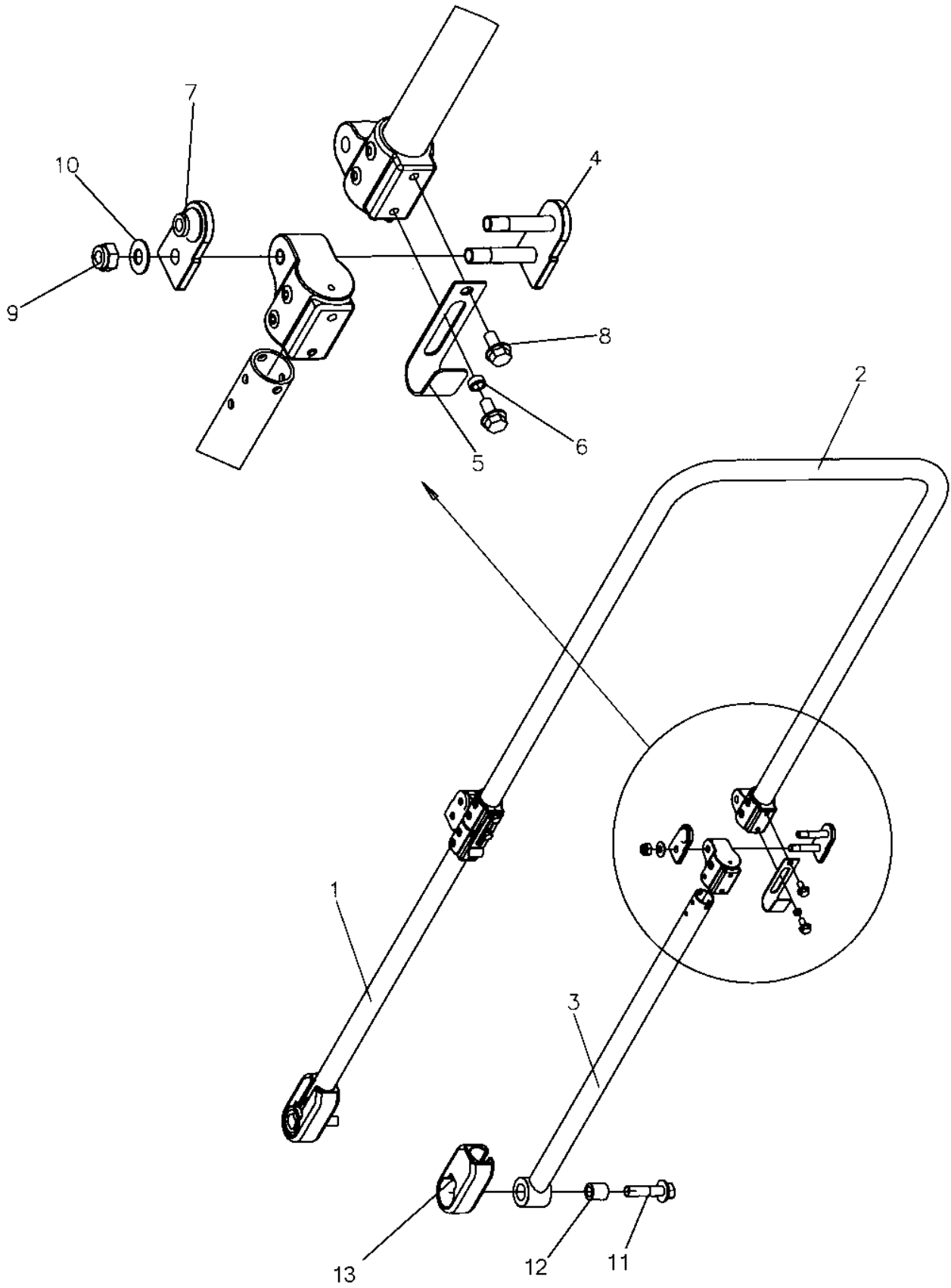
**Transmission cover Honda, Robin**

<b>Item</b>	<b>Part No</b>	<b>Rem Qty</b>	<b>Description</b>	<b>Code</b>
1	D392862-02	1	V-belt guard, outer	
60	4700393325	1	Belt guard, inner	
61	4700902041	7	Screw	
62	4700570102	1	Nut	M8
63	4700395658	1	V-belt	



**Handle**

<b>Item</b>	<b>Part No</b>	<b>Rem Qty</b>	<b>Description</b>	<b>Code</b>
10		1	Handle ( Page 54 )	Standard
20		1	Vibration damped handle ( Page 56 )	Option

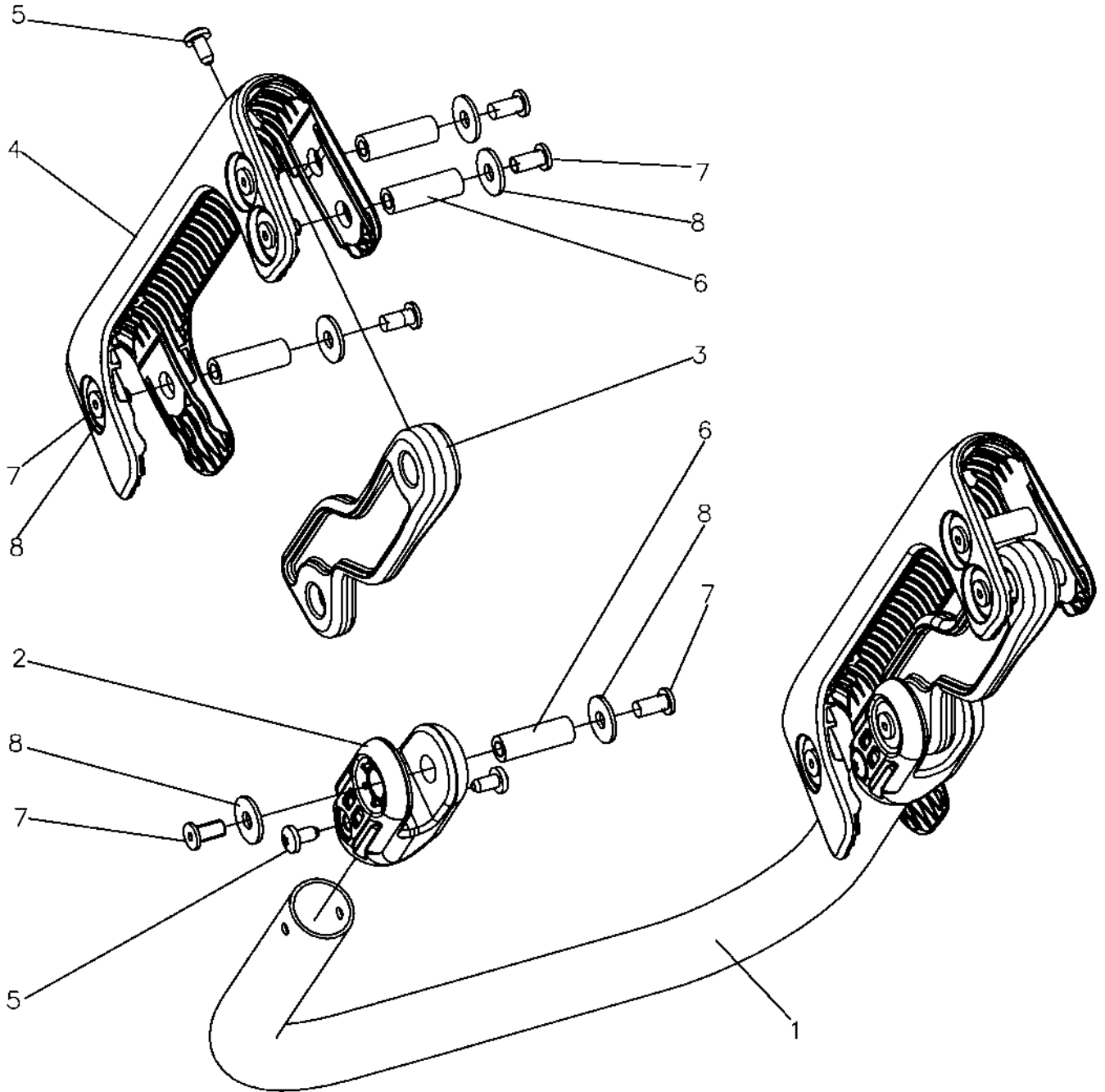


**Handle Standard**

<b>Item</b>	<b>Part No</b>	<b>Rem Qty</b>	<b>Description</b>	<b>Code</b>
1	D396311-03	1	Handle, lower part	
2	D396312-03	1	Handle, lower part	
3	D396313-03	1	Handle, upper part	
4	4700393220	2	Link	
5	4700394029	2	Cover	
6	4700394145	2	Spacer sleeve	
7	4700394228	2	Washer	
8	4700541702	4	Screw	M6x12
9	4700791182	4	Lock nut	M8
10	4700792497	4	Disc spring	
11	4700901928	2	Screw	
12	4700391821	2	Sleeve bearing	
13	4700391822	2	Shock absorber	

**Vibration damped handle Option**

18598-1





**Vibration damped handle Option**

<b>Item</b>	<b>Part No</b>	<b>Rem Qty</b>	<b>Description</b>	<b>Code</b>
1	4700391826	1	Handle	
2	4700393079	2	Bracket	
3	4700391824	2	Shock absorber	
4	4700393078	2	Bracket	
5	4700792496	8	Screw	
6	4700792406	8	Screw	
7	4700792784	16	Screw	
8	4700792783	16	Washer	

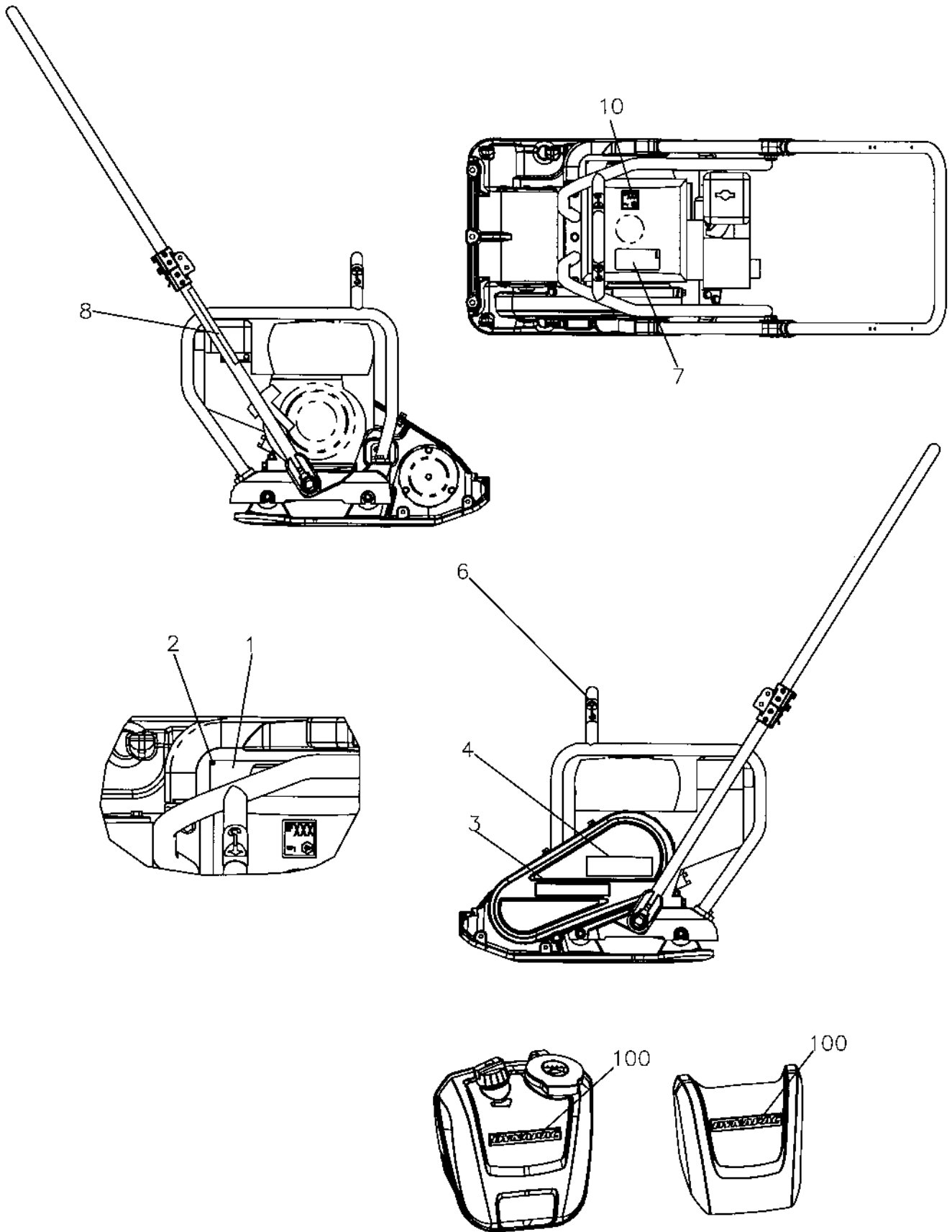


**Decals and documentation**

<b>Item</b>	<b>Part No</b>	<b>Rem Qty</b>	<b>Description</b>	<b>Code</b>
1		1	Decals and documentation ( Page 60 )	

Decals and documentation

18755



**Decals and documentation**

<b>Item</b>	<b>Part No</b>	<b>Rem Qty</b>	<b>Description</b>	<b>Code</b>
1		1	Sign plate	
2	4700527001	4	Screw	
3	4700393622	1	Decal "DYNAPAC"	
4	4700393703	1	Decal "MODEL CODE"	
6	4700281269	2	Decal "LIFT"	
7	4700394708	1	Assembly decal	
8	4700394704	1	Decal	
10	4700791293	1	Decal "Sound power level"	105dB
12			Documentation	
		1	Spare parts catalogue	
		1	Instruction manual	
		1	Instruction book, engine	
100	4700393622	1	Decal "DYNAPAC"	



**NUMERICAL INDEX**

Part Number	Page	Part Number	Page	Part Number	Page
4700163105	37	4700395018	15	4700950539	47
4700238301	43	4700395020	15	4700950540	47
4700238302	43	4700395658	51	4700950541	47
4700238303	43	4700396126	41	4700950542	47
4700238306	43	4700396168	47	4700950543	47
4700238322	43	4700396177	25	4700950544	47
4700239059	43	4700396178	25	4700950545	47
4700239060	43	4700396180	25	4700950546	47
4700239062	43	4700396194	29	4700950547	47
4700239063	43	4700396548	37	4700950548	47
4700239065	43	4700396549	35	4700950549	47
4700239067	43	4700500013	25	4700950550	47
4700239321	43	4700500018	21	4700950551	47
4700239323	43	4700500021	25	4700950552	47
4700239324	43	4700500024	25	4812070085	23
4700239325	43	4700500026	27	D392200-03	33
4700239374	43	4700500067	25	D392815-02	25
4700239375	43	4700500096	27	D392862-02	51
4700239376	43	4700500503	21	D392920-03	13
4700239377	43	4700500505	15,19	D393040-02	7
4700239378	43	4700500506	19,21	D393823-01	9
4700239379	43	4700500508	23,41,45	D396311-03	55
4700239380	43	4700527001	61	D396312-03	55
4700239381	43	4700541702	55	D396313-03	55
4700239391	43	4700570102	27,51	D396963-03	17
4700239664	43	4700570103	11		
4700239711	47	4700573002	43		
4700239712	47	4700601003	21,25		
4700239715	47	4700615103	29		
4700281125	43	4700791182	25,55		
4700281269	13,61	4700791293	61		
4700282373	11	4700792119	35,37		
4700383582	21	4700792406	57		
4700391706	41,45	4700792496	57		
4700391821	55	4700792497	55		
4700391822	55	4700792711	33		
4700391824	57	4700792725	9		
4700391826	57	4700792774	41		
4700392073	25	4700792783	57		
4700392092	25	4700792784	57		
4700392216	33	4700792804	25		
4700393020	25	4700901928	55		
4700393078	57	4700902041	13,17,29,37,41		
4700393079	57		45,51		
4700393220	55	4700902285	21		
4700393325	51	4700902286	21,25,29,41,45		
4700393381	25	4700904229	25		
4700393622	61	4700904556	27		
4700393703	61	4700904640	37		
4700393903	41,45	4700904734	41,45		
4700393987	21	4700910266	47		
4700393989	21	4700910267	47		
4700393990	21	4700910268	47		
4700394029	55	4700924842	43		
4700394043	27	4700928381	25		
4700394044	27	4700950436	47		
4700394103	21	4700950437	47		
4700394145	55	4700950439	47		
4700394228	55	4700950535	47		
4700394704	61	4700950536	47		
4700394708	61	4700950537	47		
4700395013	37	4700950538	47		

