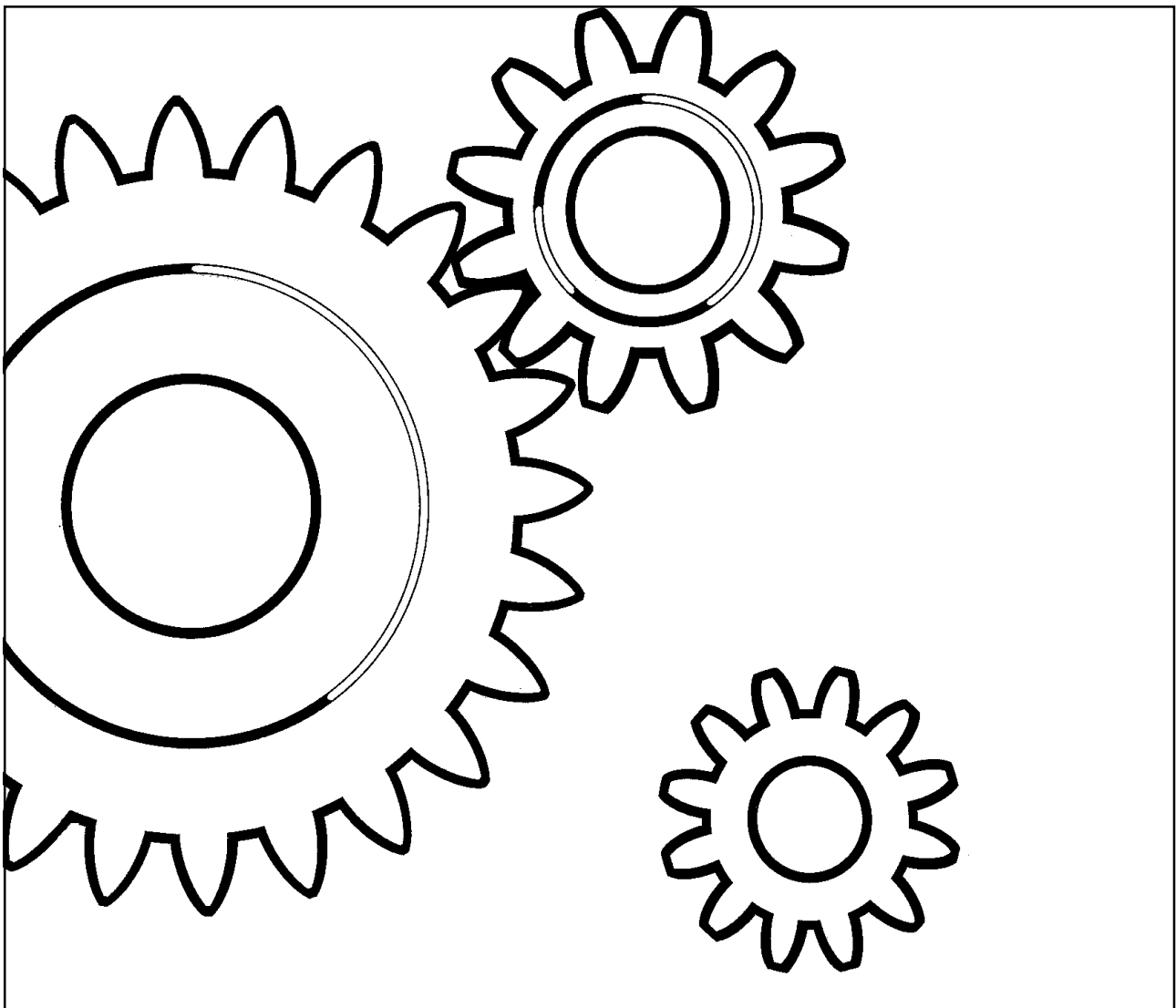


DYNAPAC
LF100

SPARE PARTS
CATALOGUE
SLF100-1EN2



DYNAPAC

Part of the Atlas Copco Group

Atlas Copco Construction Tools AB

SE-105 23 Stockholm, Sweden

LF100

Spare Parts Catalogue

SLF100-1EN2

Valid from serial number:

**27600001*-*

Engines:

Honda GX160

Robin EX17

Hatz 1B20

Published catalogue issues valid for these plate compactors:

<i>Catalogue</i>	<i>Issue date</i>	
<i>SLF100-1EN1</i>	<i>2008 - 12</i>	<i>Replaced by SLF100-1EN2</i>
<i>SLF100-1EN2</i>	<i>2009 - 04</i>	



RESERVDLSBESTÄLLNING

Följande uppgifter ska lämnas vid beställning av reservdelar för att undvika leveransfel:

1. Maskintyp.
2. Vältens serienummer.
3. Antal av önskad reservdel.
4. Reserdelens artikelnummer.
5. Reservdelens benämning.
6. Måttuppgifter vid beställning av metervara.

ERSATZTEILBESTELLUNG

Zur Vermeidung von Fehllieferungen sind bei der Bestellung von Ersatzteilen folgende Angaben zu machen:

1. Maschinentyp.
2. Herstellungsnummer.
3. Bestellmenge. (Quantity)
4. Ersatzteilnummer. (Part N°)
5. Ersatzteilbenennung. (Denomination)
6. Massangaben bei Bestellung von Meterware.

PEDIDO DE RECAMBIOS

Para evitar errores en las entregas, deberán indicarse los siguientes datos al hacer un pedido de recambios:

1. Tipo de máquina.
2. Número de serie.
3. Cantidad de piezas deseadas. (Quantity)
4. Número de artículo de la pieza de recambio. (Part N°)
5. Denominación de la pieza. (Denomination)
6. Indíquese la medida al solicitar un artículo que se expide por metros.

ORDERING SPARE PARTS

To avoid errors in delivery, please give the following information when ordering spare parts:

1. Type of machine.
2. Roller serial number.
3. Quantity required.
4. Part number.
5. Parts denomination.
6. Dimensions when ordering per length.

ORDINI DI RICAMBI

Per evitare errori nelle consegne di ricambi, Vi preghiamo di comunicarci le seguenti informazioni al momento dell'ordinazione:

1. Tipo di macchina.
2. Numero di serie della macchina.
3. Quantità dei pezzi desiderati. (Quantity)
4. Numero di codice del pezzo. (Part N°)
5. Descrizione del pezzo di ricambio. (Denomination)
6. Misura, in caso di ordine per metro.

COMMANDE DE PIÈCES DE RECHANGE

Les indications suivantes doivent être fournies lors de la commande de pièces de rechange, afin d'éviter toute erreur de livraison:

1. Type de machine.
2. Numéro de série.
3. Quantité désirée de pièce de rechange. (Quantity)
4. Numéro de la pièce de rechange. (Part N°)
5. Dénomination de la pièce de rechange. (Denomination)
6. Longueur en cas de commande au mètre.

YOUR AGENT/DEALER:

PÄRMETIKETT

För att undvika fel vid reservdelsbeställning finns här nedan två etiketter som passar i fickorna på pärmarnas ryggar. På dessa kan man se från vilket vältnummer av aktuell maskin reservdelskatalogen gäller. Gör så här:

1. Tag denna sida ur pärmen.
2. Klipp ut etiketten till **VÄNSTER** (1) och sätt in den i fickan på **DENNA** pärmens rygg.
3. Finns det en etikett till **HÖGER** (2), kan denna användas på pärmen för **FÖREGÅENDE** utgåva av denna katalog.
4. Kasta detta papper.

KATALOG-BESCHRIFTUNG

Zur Vermeidung von Fehlern bei der Ersatzteilbestellung benutzen Sie bitte die unteren Beschriftungen, um die Kataloge auf der Rückseite zu kennzeichnen. Auf der Beschriftung ist angegeben, für welche Maschinennummern der jeweilige Katalog gültig ist. Ablauf:

1. Nehmen Sie dieses Blatt aus dem Katalog.
2. Schneiden Sie die **LINKE** Beschriftung (1) aus. Schieben Sie die Beschriftung in die tasche auf **DEM** Katalogrücke.
3. Sollte die Beschriftung unten **RECHTS** (2) mitgeliefert werden, kennzeichnen Sie damit bitte die **ÄLTERE** Ausführung dieses Kataloges.
4. Den Rest dieses Blattes bitte vernichten.

ETIQUETA PARA LA CARPETA

Para evitar errores al pedir repuestos utilicen las etiquetas abajo descritas para identificar los catálogos en la parte trasera de la carpeta. En la etiqueta se ven los números de referencia de la serie para la cual es válido el catálogo. Instrucciones:

1. Quitar esta página de la carpeta.
2. Corta la etiqueta **IZQUIERDA** (1) y ponerla en **ESTA** carpeta en la parte trasera.
3. Si hay una etiqueta en la parte **DERECHA** (2) se puede utilizar en la carpeta para el catálogo que **PRECEDE** a esta.
4. Tirar esta hoja.

BINDER LABEL

To avoid errors when ordering spare parts use the labels below to identify the catalogues on the back of the binder. The label contain the serial number range for which the catalogue is valid. Do like this:

1. Remove this page from the binder.
2. Cut out the **LEFT** label (1) and put it on **THIS** binders back.
3. If there is a label to the **RIGHT** (2), it can be used on the binder for **PRECEDING** issue of this catalogue.
4. Throw away this paper.

ETICHETTAPOSTASULRACCOGLITORE

Per evitare errori quando ordinate pezzi di ricambio, usate le etichette in calce che servono ad identificare i cataloghi sul retro del raccoglitore. L'etichetta indica il numero di matricola delle macchine prese in considerazione nel catalogo.

1. Rimuovete questa pagina dal raccoglitore.
2. Ritagliate l'etichetta posta a **SINISTRA** (1) e ponetela sul retro **DEL** raccoglitore.
3. Se trovate anche un'etichetta sulla **DESTRA** (2), ritagliatela e ponetela sul raccoglitore relativo alla **PRECEDENTE** edizione del catalogo.
4. Distruggete questo foglio.

ETIQUETAGE DU CATALOGUE

Afin d'éviter des erreurs lors de commandes de pièces de rechange, nous vous conseillons d'apposer les marquages ci-dessous à l'arrière du classeur, pour identifier les catalogues. Ce marquage indique les numéros de série pour lesquels le catalogue est adapté. Il convient de procéder de la façon suivante:

1. Retirez cette page du classeur.
2. Découpez l'étiquette de **GAUCHE** (1), et apposez-la à l'arrière de **CE** catalogue.
3. Si il y a une étiquette à **DROITE** (2), vous pourrez l'apposer sur le classeur de l'édition **PRECEDENTE** du catalogue.
4. Détruire cette feuille.

1.



LF100 From SN: 27600001	2
Engine plate, and eccentric element	4
Main assy, overview	6
Engine plate installation Honda, Robin	8
Engine plate installation, Hatz	10
Ground plate installation	12
Protective frame, Honda, Robin Option	14
Protective frame, Hatz Option	16
Lifting handle Option	18
Lifting eye, Honda, Robin Option	20
Lifting eye, option Hatz	22
Transport device installation Option	24
Transport wheel Option	26
Weight Option	28
Sprinkler system, option	30
Block paving kit, width=500 mm Option	32
Fork lifting device Option	34
Eccentric element	36
Eccentric element	38
Cover, right side	40
Cover, left side	42
Engine and engine installation	44
Engine installation	46
Engine Honda GX160K1SX	48
Engine installation Robin	50
Engine Robin EX17	52
Engine installation Hatz	54
Engine Hatz 1B20	56
Power transmission	60
Transmission cover Honda, Robin	62
Transmission cover Hatz	64
Handle	66
Handle Standard	68
Vibration damped handle Option	70
Decals and documentation	72
Decals and documentation	74

LF100 From SN: 27600001

LF100100



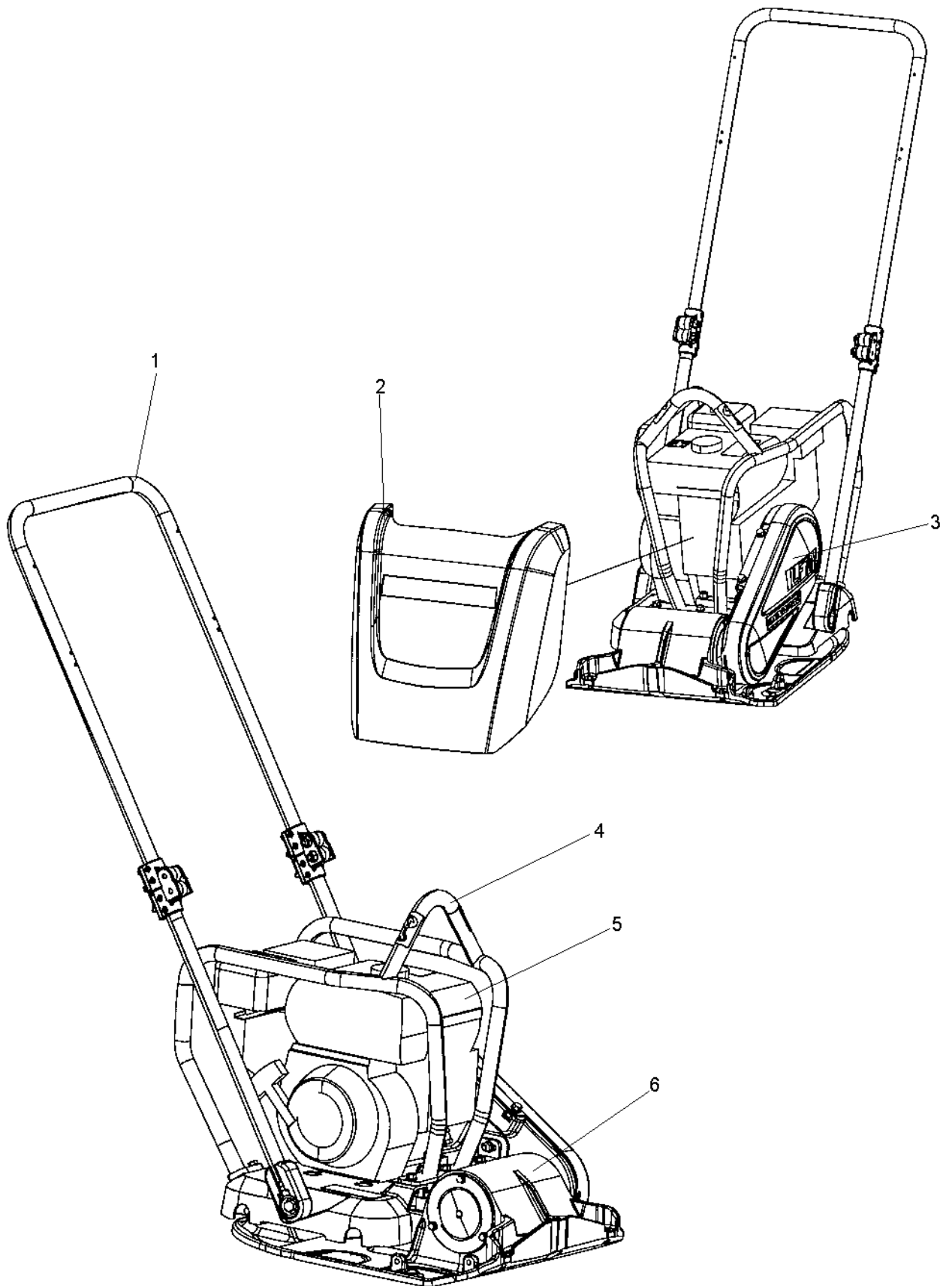
LF100 From SN: 27600001

Item	Part No	Rem Qty	Description	Code
10		1	Engine plate, and eccentric element (Page 4)	
20		1	Eccentric element (Page 36)	
30		1	Engine and engine installation (Page 44)	
40		1	Power transmission (Page 60)	
70		1	Handle (Page 66)	
80		1	Decals and documentation (Page 72)	

Engine plate, and eccentric element

Engine plate, and eccentric element

Item	Part No	Rem Qty	Description	Code
10		1	Main assy, overview (Page 6)	
20		1	Engine plate installation Honda, Robin (Page 8)	
25		1	Engine plate installation, (Page 10)	Hatz
40		1	Ground plate installation (Page 12)	
50		1	Protective frame, Honda, Robin (Page 14)	Option
55		1	Protective frame, Hatz (Page 16)	Option
60		1	Lifting handle (Page 18)	Option
70		1	Lifting eye, Honda, Robin (Page 20)	Option
80		1	Lifting eye, option (Page 22)	Hatz
90		1	Transport device installation (Page 24)	Option
100		1	Transport wheel (Page 26)	Option
110		1	Weight (Page 28)	Option
120		1	Sprinkler system, option (Page 30)	
130		1	Block paving kit, widht=500 mm (Page 32)	Option
140		1	Fork lifting device (Page 34)	Option

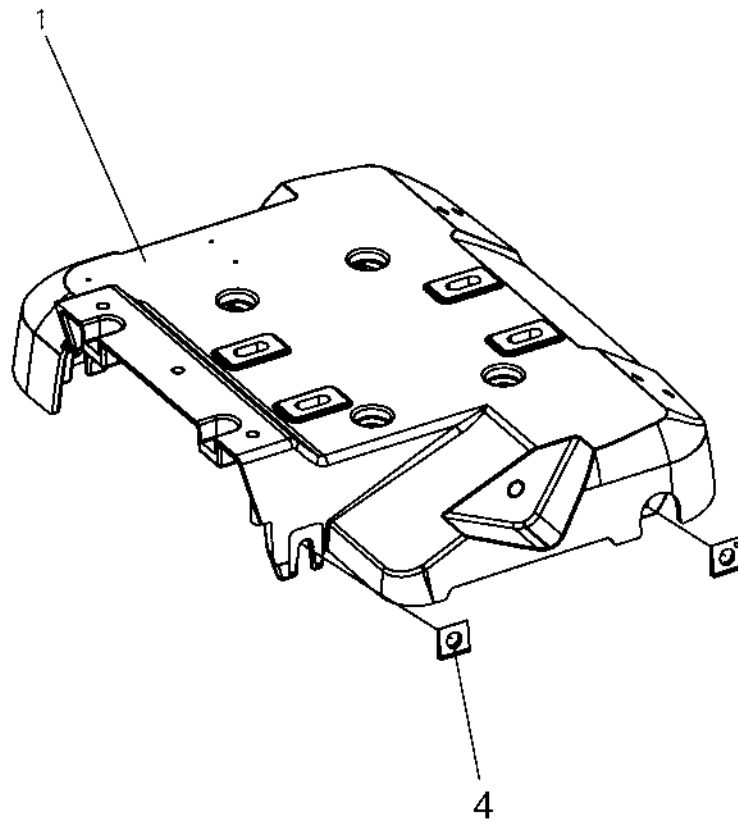


Main assy, overview

Item	Part No	Rem Qty	Description	Code
1			Handle (Page 66)	
2	D393040-02	1	Cover	Honda, Robin
	D393041-02	1	Cover	Hatz
3			Power transmission (Page 60)	
4			Engine plate, and eccentric element (Page 4)	
5			Engine and engine installation (Page 44)	
6			Eccentric element (Page 36)	
		1		

Engine plate installation Honda, Robin

18620-1

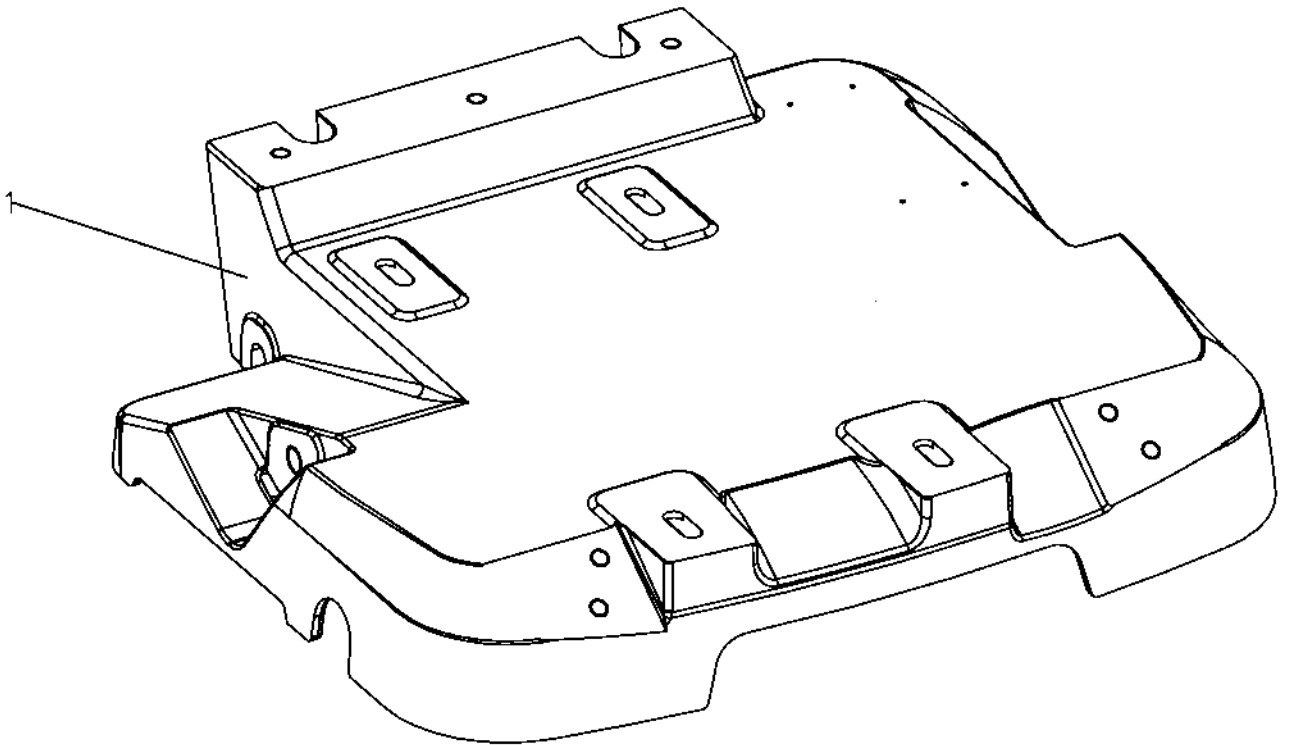


Engine plate installation Honda, Robin

Item	Part No	Rem Qty	Description	Code
1	D393823-01	1	Engine plate	
4	4700792725	4	Square taper washer	

Engine plate installation, Hatz

18629-1

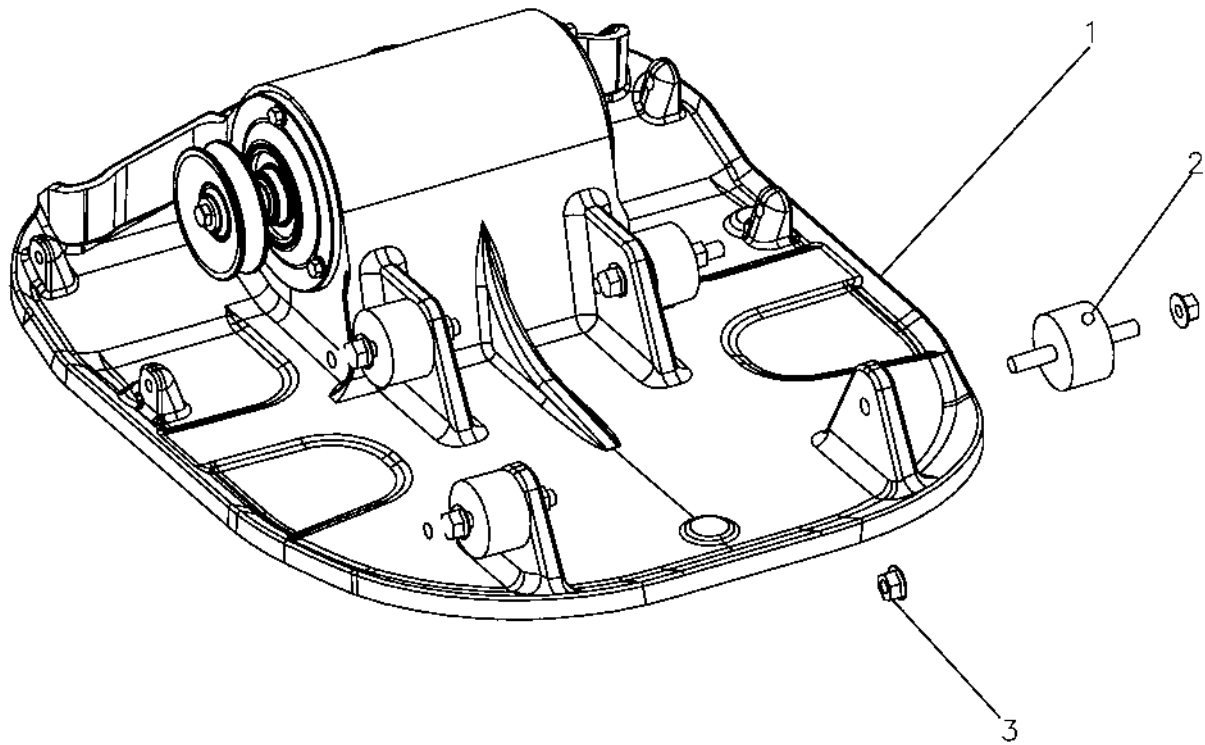


Engine plate installation, Hatz

Item	Part No	Rem Qty	Description	Code
1	D393458-01	1	Engine plate	

Ground plate installation

18625

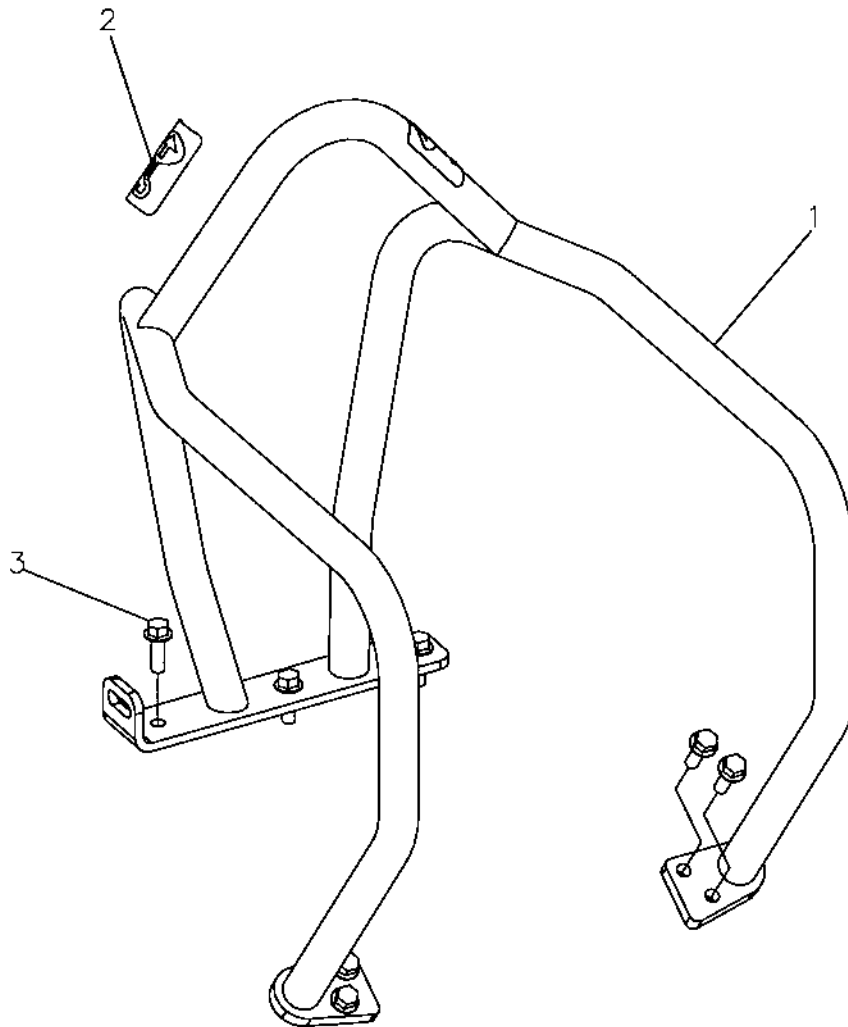


Ground plate installation

Item	Part No	Rem Qty	Description	Code
1		1	Engine plate	
2	4700282373	4	Shock absorber	
3	4700570103	8	Nut	M10

Protective frame, Honda, Robin Option

18613

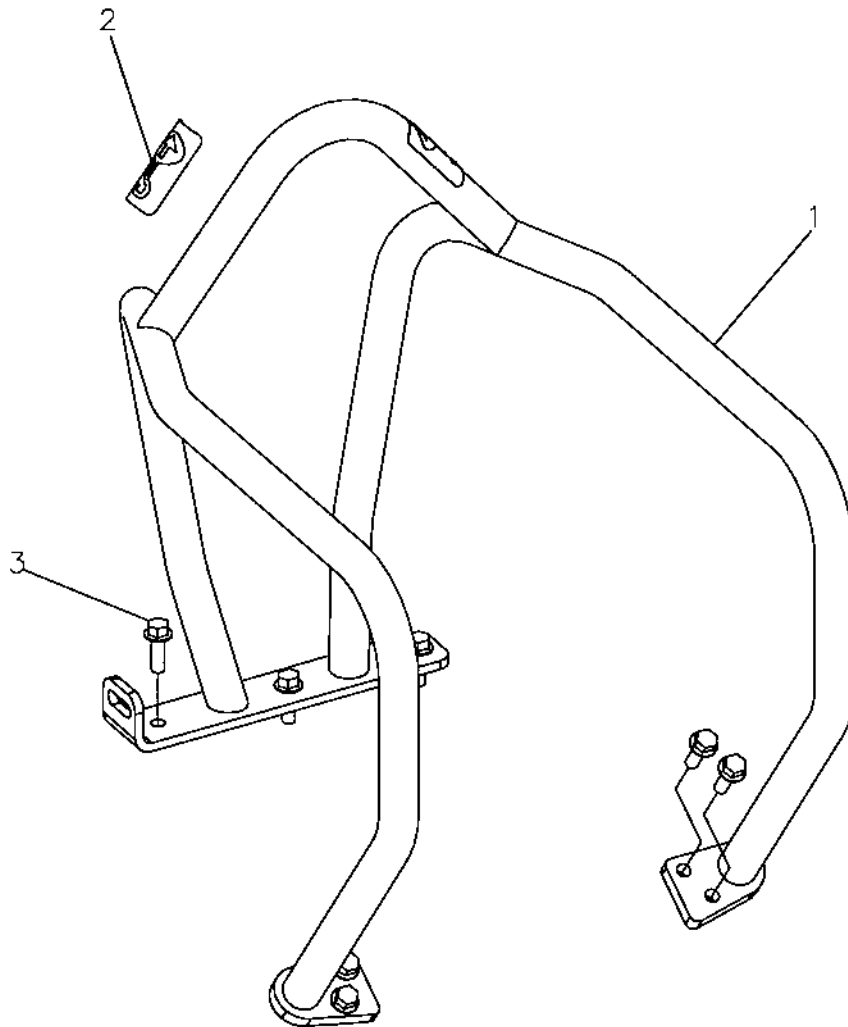


Protective frame, Honda, Robin Option

Item	Part No	Rem Qty	Description	Code
1	D392920-03	1	Protective frame	
2	4700281269	2	Decal "LIFT"	
3	4700902041	7	Screw	

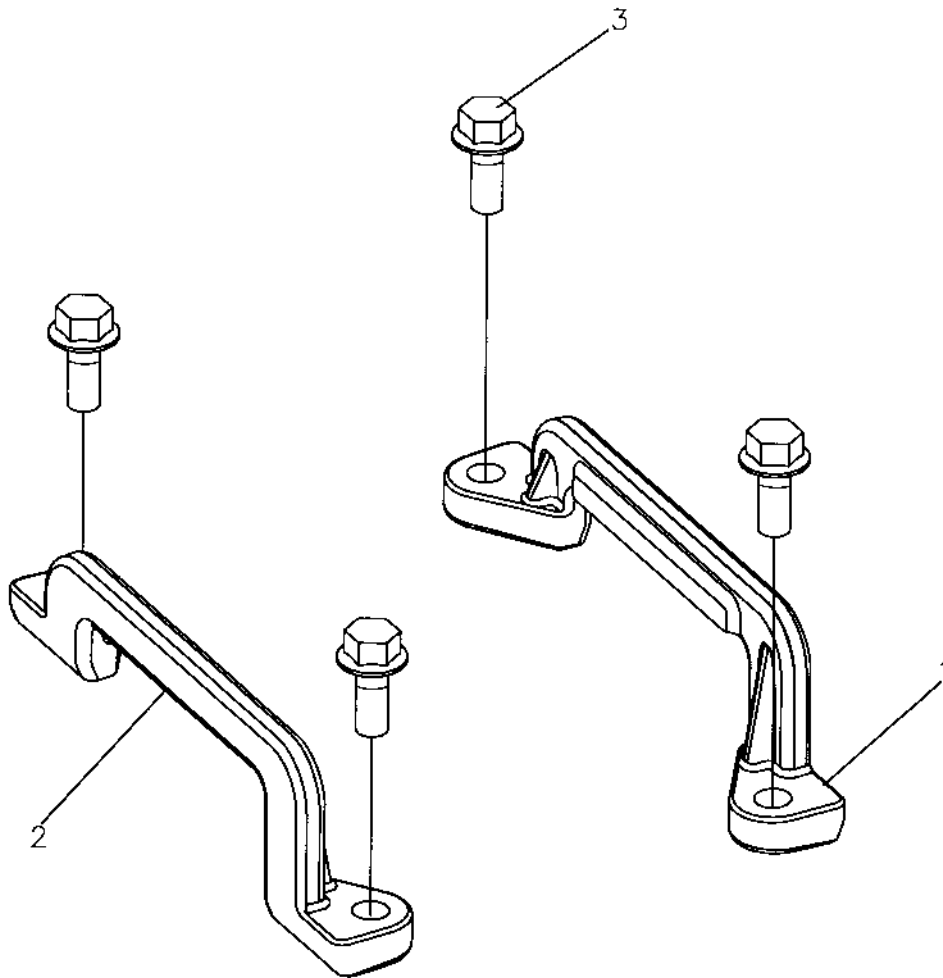
Protective frame, Hatz Option

18613



Protective frame, Hatz Option

Item	Part No	Rem Qty	Description	Code
1	D393483-03	1	Protective frame	
2	4700281269	1	Decal "LIFT"	
3	4700902041	7	Screw	

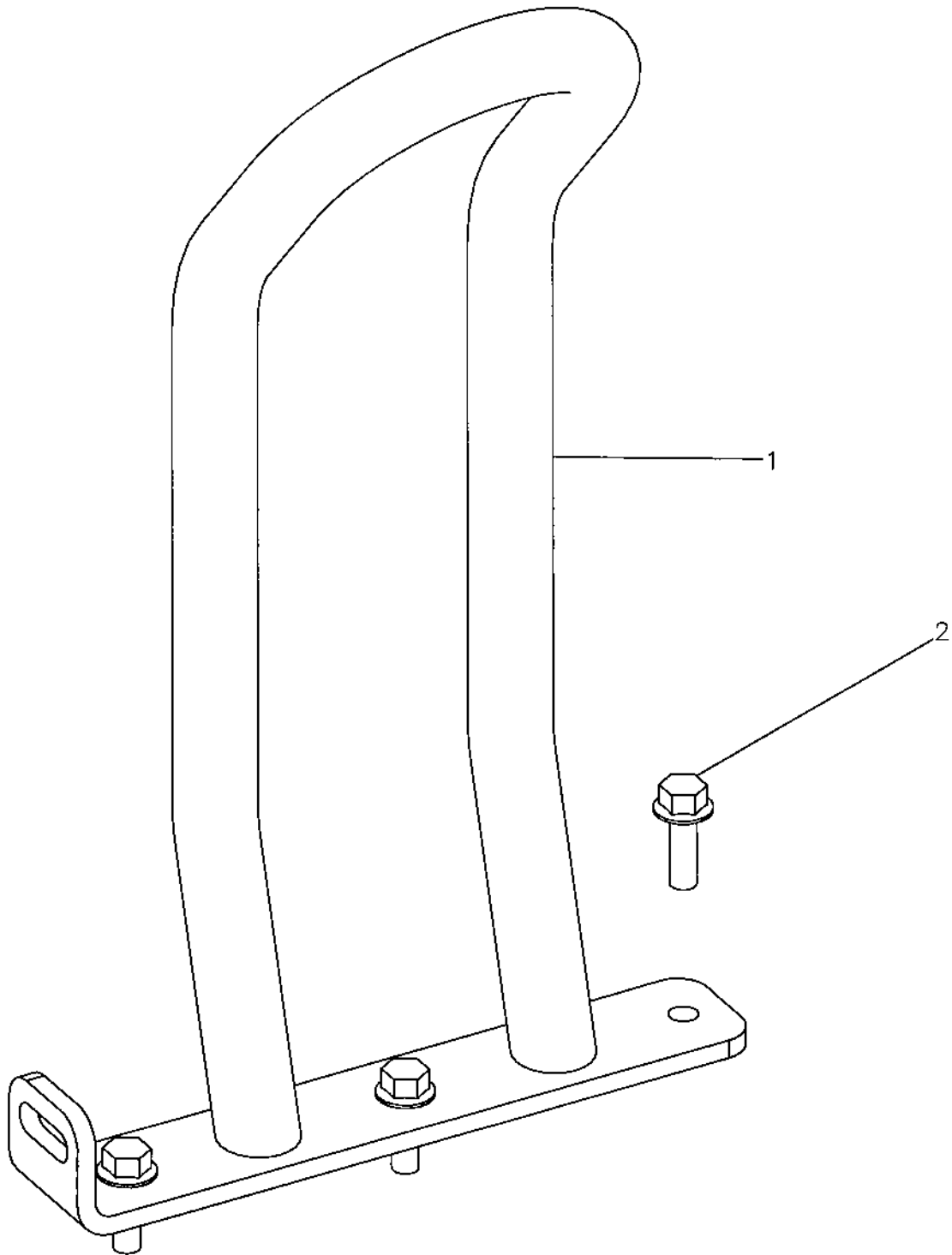


Lifting handle Option

Item	Part No	Rem Qty	Description	Code
1	4700395018	1	Handle, right	
2	4700395020	1	Handle, left	
3	4700500505	4	Screw	M8x20 8.8

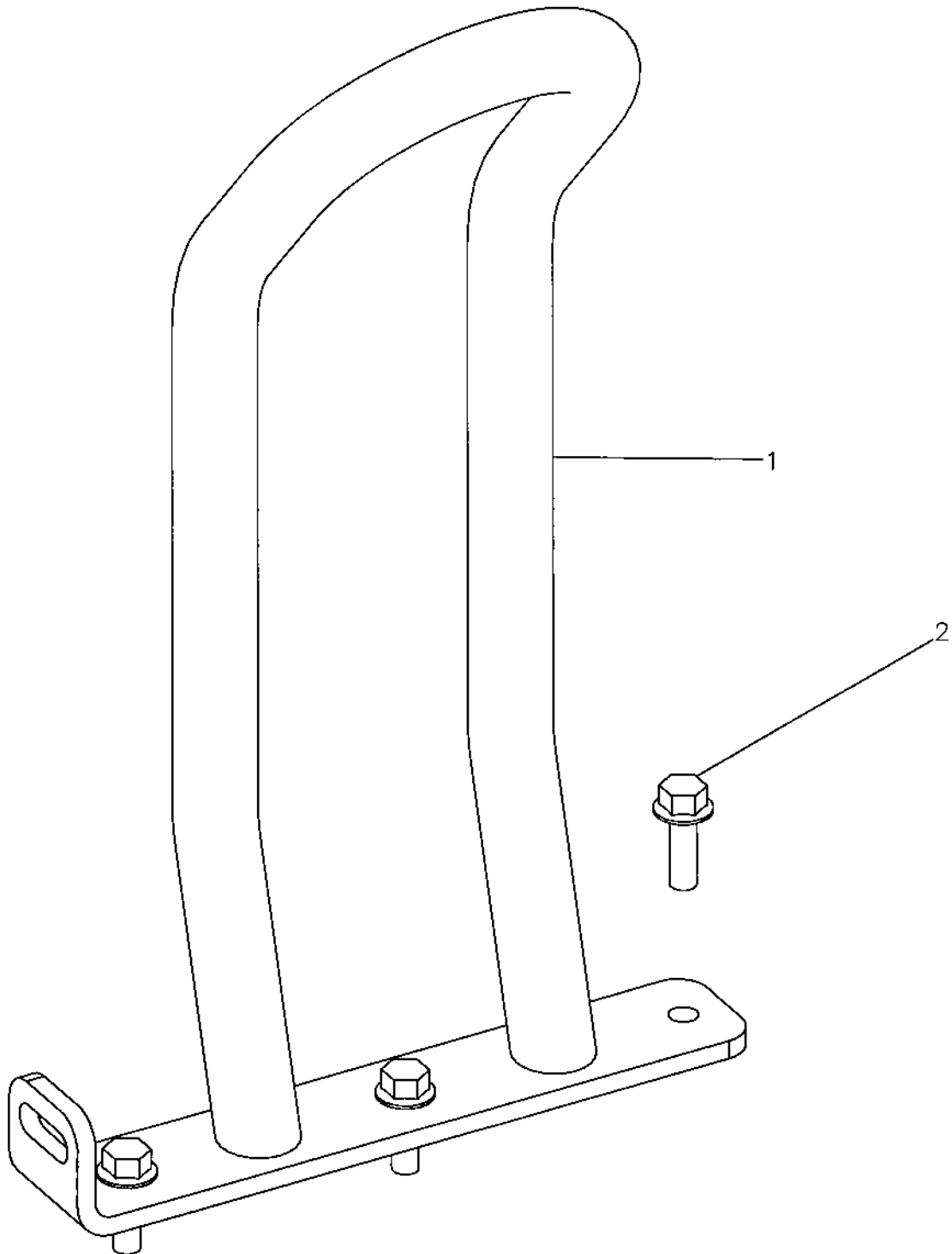
Lifting eye, Honda, Robin Option

18623



Lifting eye, Honda, Robin Option

Item	Part No	Rem Qty	Description	Code
1	D396963-03	1	Lifting eye	
2	4700902041	3	Screw	

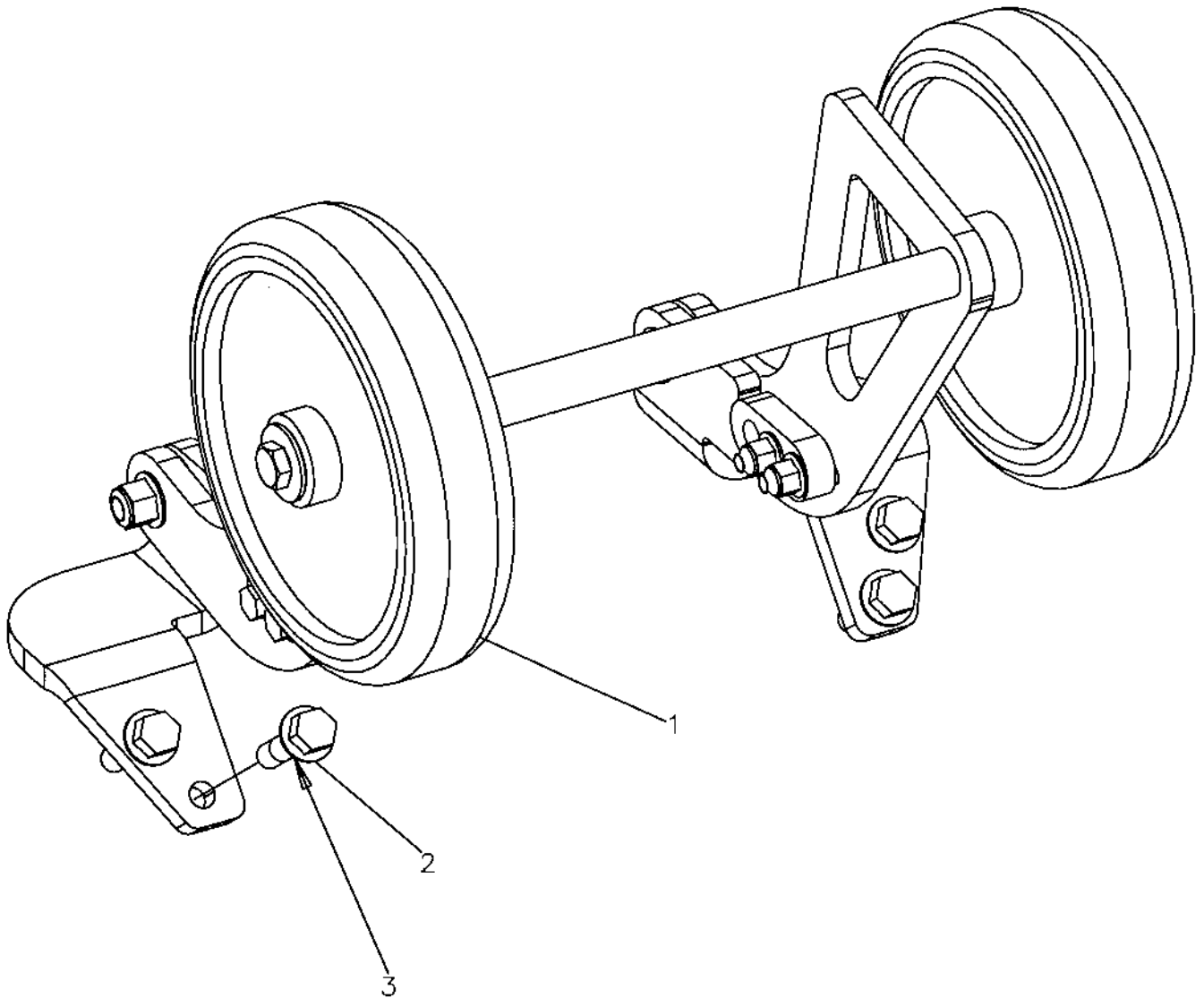


Lifting eye, option Hatz

Item	Part No	Rem Qty	Description	Code
1	D396964-03	1	Lifting eye	
2	4700902041	3	Screw	

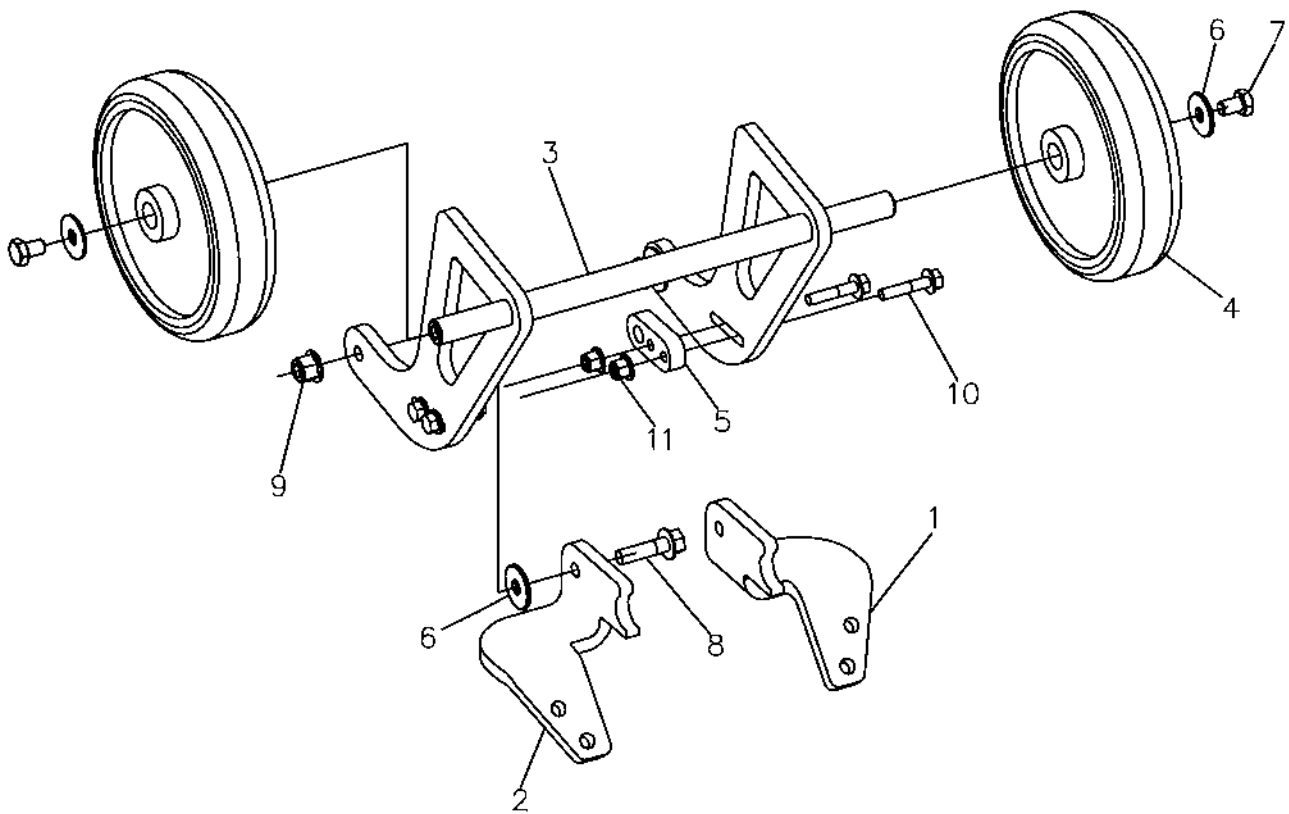
Transport device installation Option

18615



Transport device installation Option

Item	Part No	Rem Qty	Description	Code
1		1	Transport wheel (Page 26)	Option
2	4700500505	4	Screw	M8x20 8.8
3	4700500506	4	Screw	

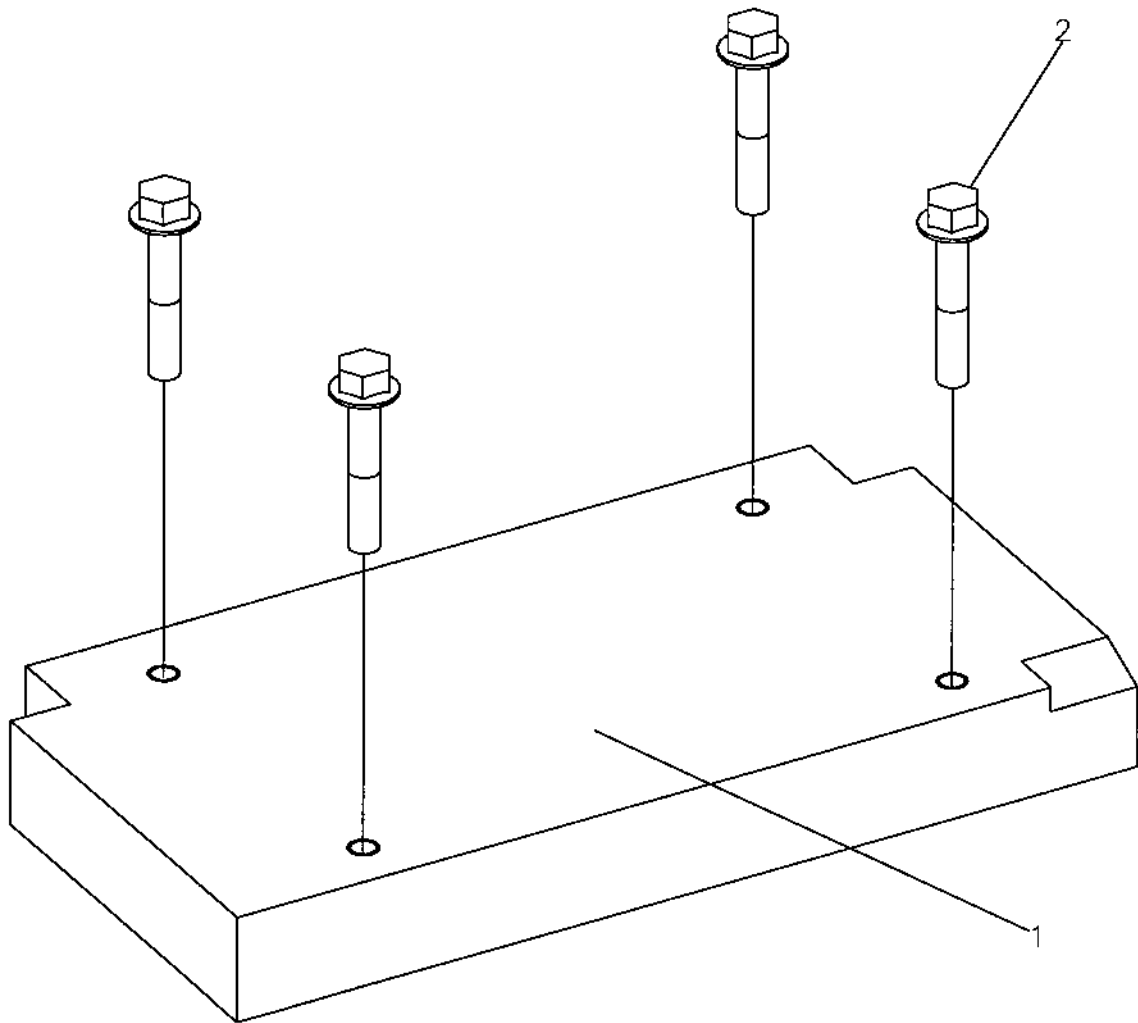


Transport wheel Option

Item	Part No	Rem Qty	Description	Code
1	4700393989	1	Bracket, left	
2	4700393990	1	Bracket, right	
3	4700393987	1	Fork	
4	4700383582	2	Wheel	
5	4700394103	2	Lock	
6	4700601003	4	Washer	8,4x25x2
7	4700500018	2	Screw	M8-1,25x12 8,8
8	4700500506	2	Screw	
9	4700902286	2	Lock nut	M8
10	4700500503	4	Screw	
11	4700902285	4	Lock nut	M6

Weight Option

18622

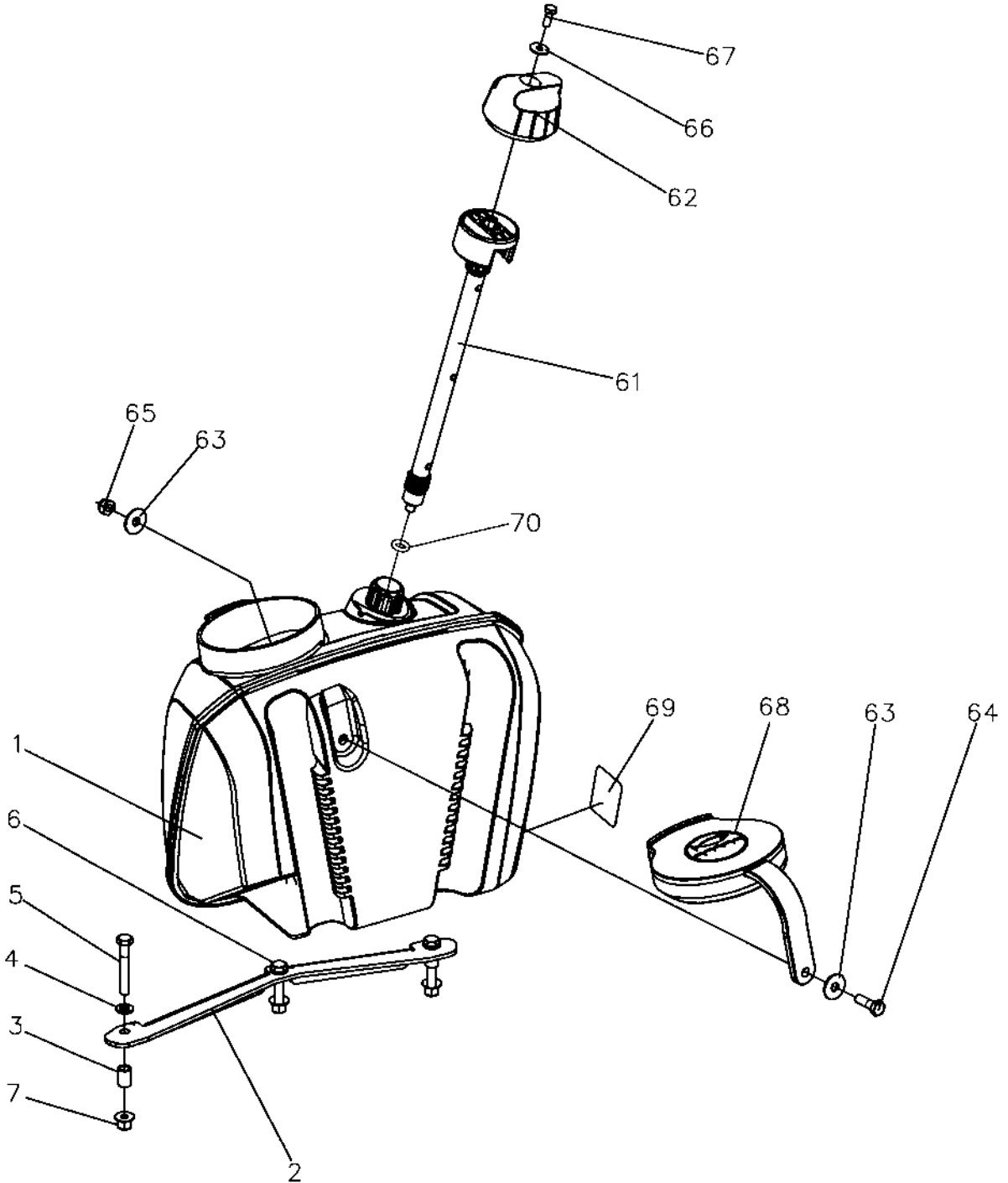


Weight Option

Item	Part No	Rem Qty	Description	Code
1	4812070085	1	Weight	
2	4700500508	4	Screw	

Sprinkler system, option

18624-2

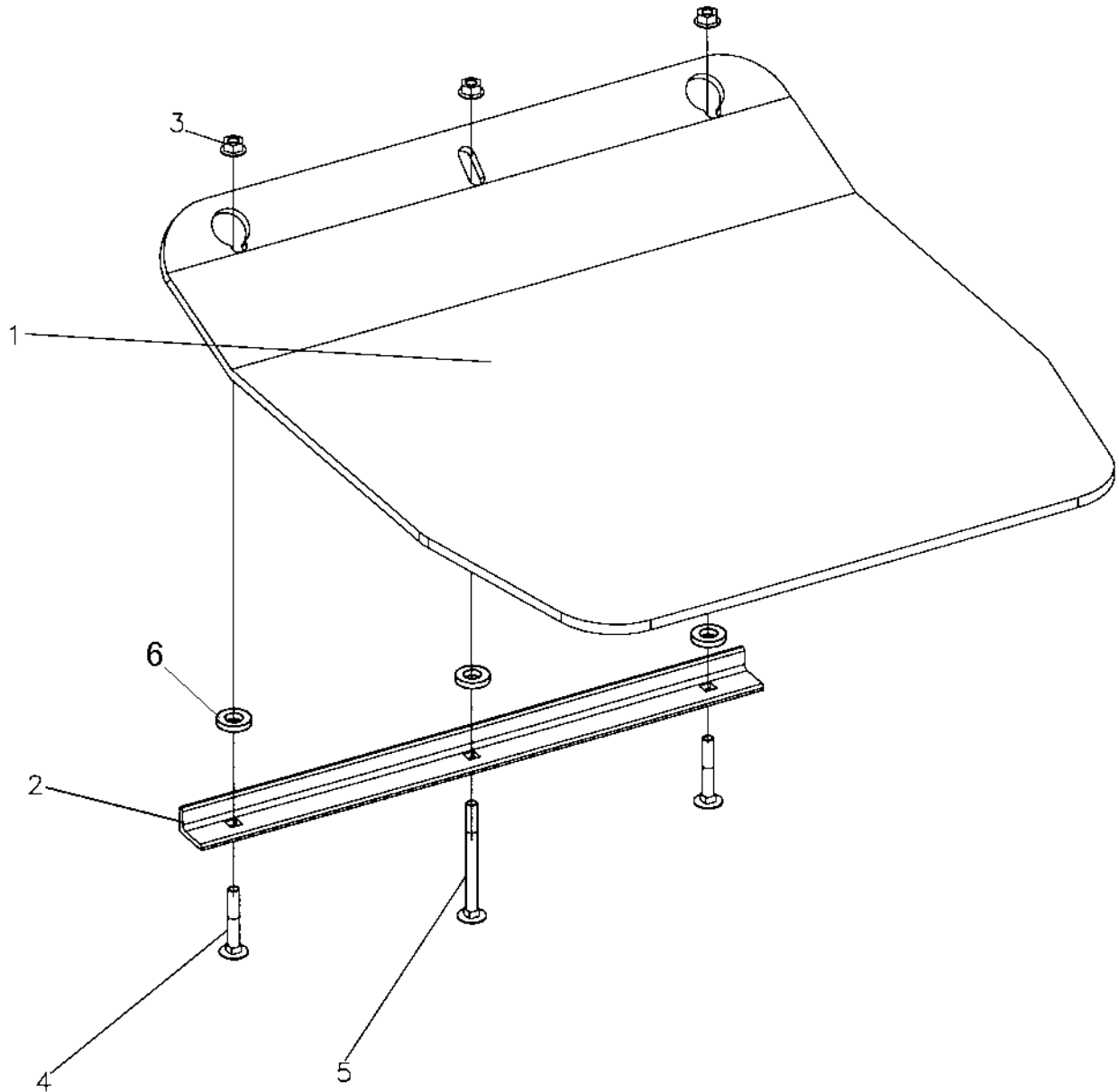


Sprinkler system, option

Item	Part No	Rem Qty	Description	Code
1	D392815-02	1	Water tank	
2	4700396177	1	Sprinkler bar	
3	4700396180	2	Spacer	
4	4700904229	3	Washer	8,4x16x1,5
5	4700500067	2	Screw	M8-1,25x55 8,8
6	4700500024	1	Screw	M8x45
7	4700902286	3	Lock nut	M8
61	4700393020	1	Valve rod	
62	4700392073	1	Handle	
63	4700601003	2	Washer	8,4x25x2
64	4700500021	1	Screw	M8-1,25x25 8.8
65	4700791182	1	Lock nut	M8
66	4700928381	1	Washer	6,4x18x1,6
67	4700500013	1	Screw	M6-1x16 8,8
68	4700392092	1	Cap	
69	4700393381	1	Decal	
70	4700792804	1	O-ring	

Block paving kit, width=500 mm Option

18752-1

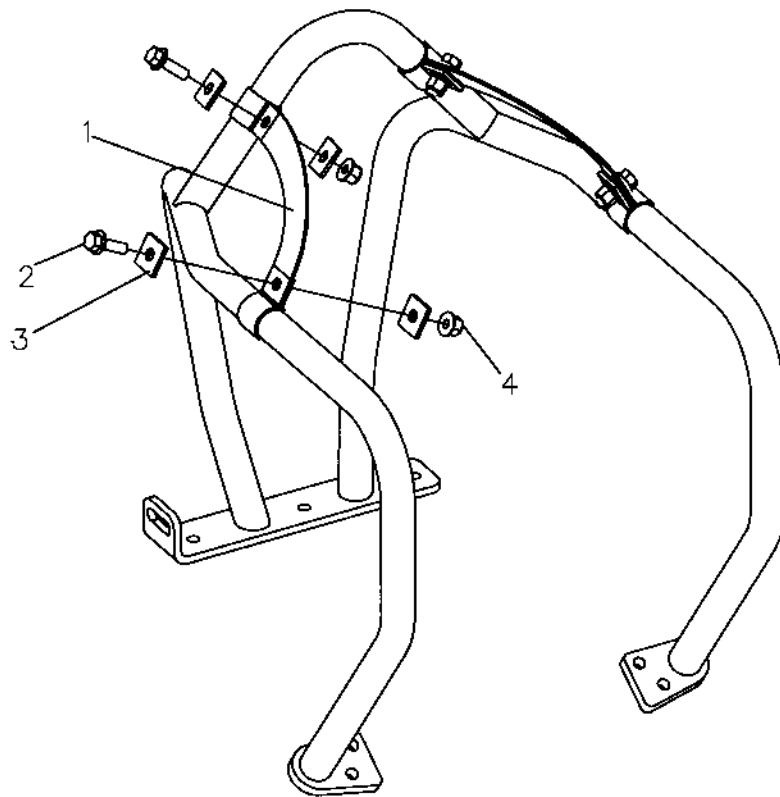


Block paving kit, width=500 mm Option

Item	Part No	Rem Qty	Description	Code
1	4700394046	1	Polyurethane plate	
2	4700394047	1	Bracket	
3	4700570102	3	Nut	M8
4	4700500026	2	Screw	M8-1,25x60 8,8
5	4700500096	1	Screw	
6	4700904556	3	Washer	8,4x16x3,0

Fork lifting device Option

18753

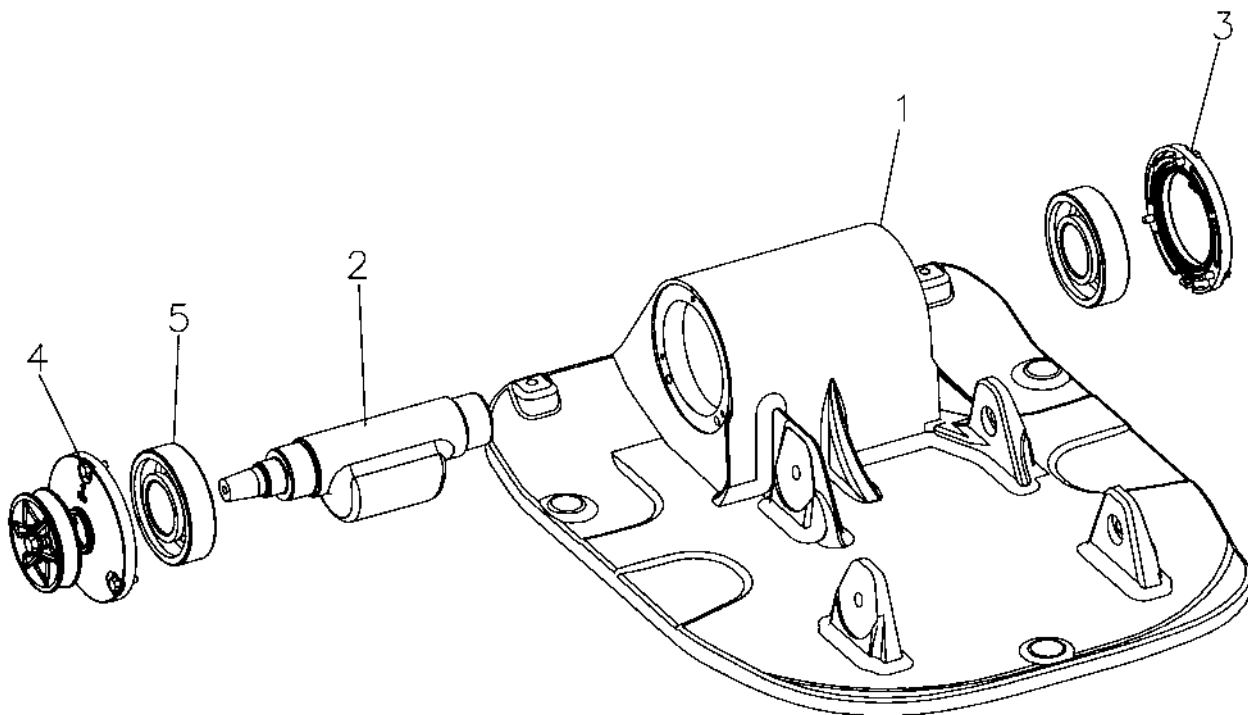


Fork lifting device Option

Item	Part No	Rem Qty	Description	Code
1	4700396194	2	Lifting eye	
2	4700902041	4	Screw	
3	4700615103	8	Screw	
4	4700902286	4	Lock nut	M8

Eccentric element

Item	Part No	Rem Qty	Description	Code
1		1	Eccentric element (Page 38)	
2		1	Cover, right side (Page 40)	
3		1	Cover, left side (Page 42)	

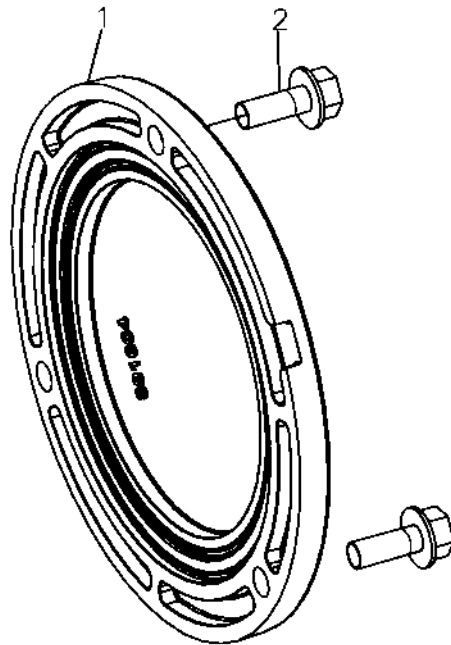


Eccentric element

Item	Part No	Rem Qty	Description	Code
1	D392214-03	1	Ground plate	
2	4700397510	1	Eccentric shaft	
3		1	Cover, right side (Page 40)	
4		1	Cover, left side (Page 42)	
5	4700792711	2	Ball bearing	

Cover, right side

18602-1

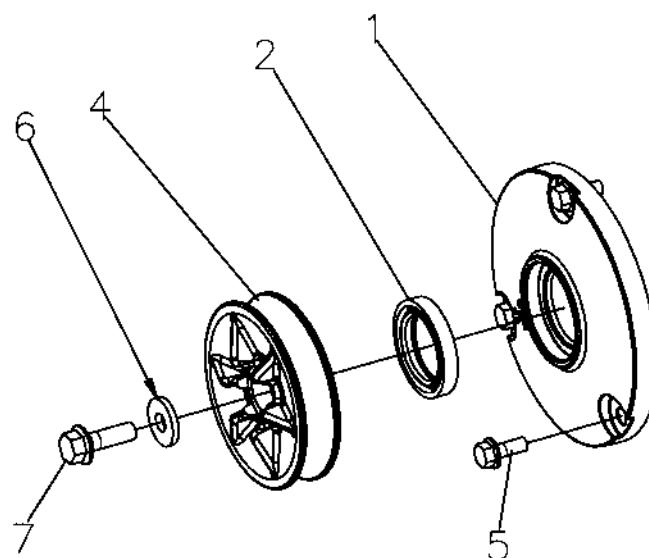


Cover, right side

Item	Part No	Rem Qty	Description	Code
1	4700396549	1	Cover	
2	4700792119	3	Screw	
		1		

Cover, left side

18601-2

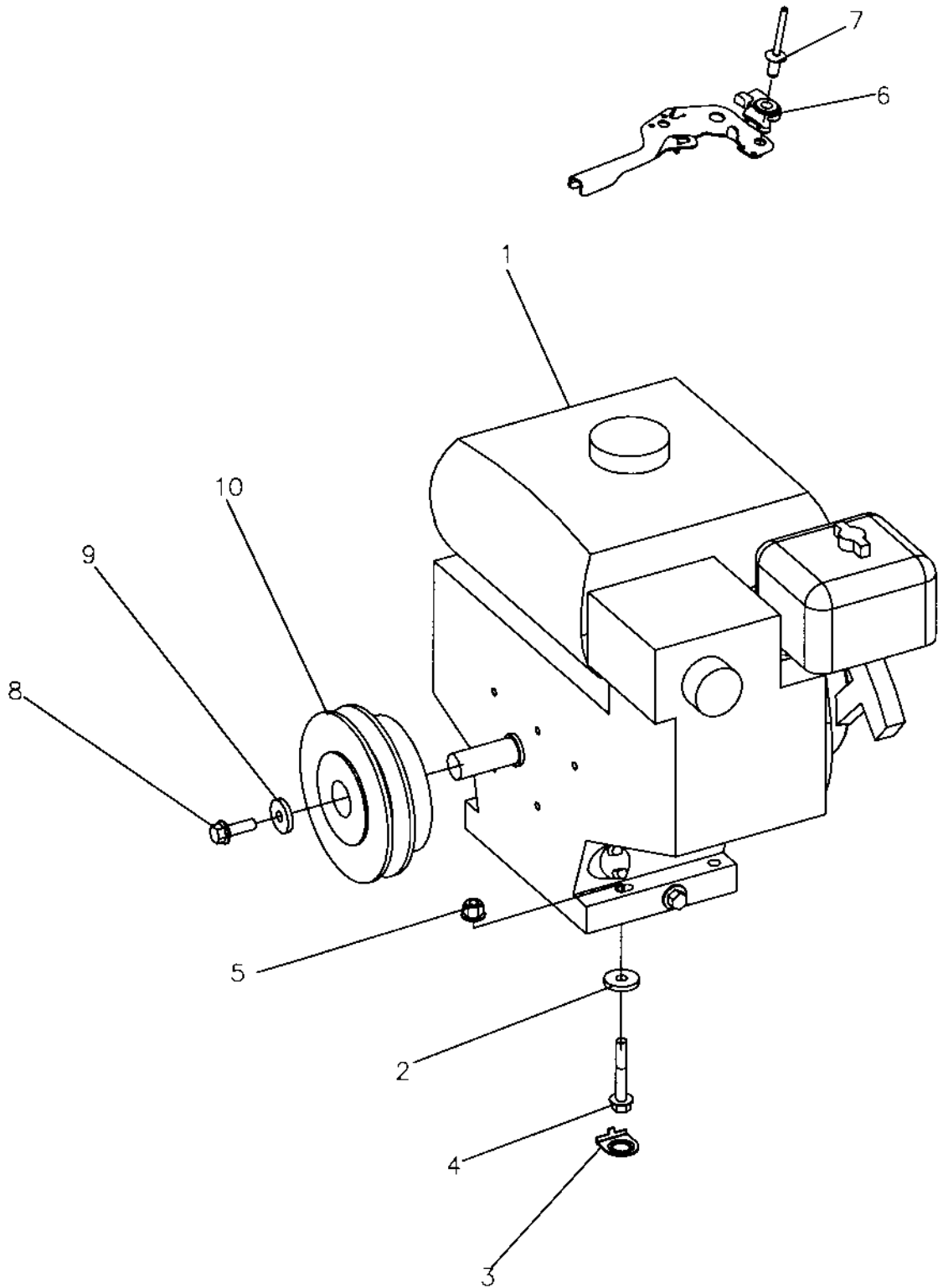


Cover, left side

Item	Part No	Rem Qty	Description	Code
1	4700396548	1	Cover	
2	4700163105	1	Lip-type oil seal	
4	4700395013	1	V-belt pulley	
5	4700792119	3	Screw	
6	4700904640	1	Washer	8,4x22x3
7	4700902041	1	Screw	

Engine and engine installation

Item	Part No	Rem Qty	Description	Code
10		1	Engine installation (Page 46)	
30		1	Engine (Page 48)	Honda GX160K1SX
50		1	Engine installation (Page 50)	Robin
60		1	Engine (Page 52)	Robin EX17
70		1	Engine installation (Page 54)	Hatz
80		1	Engine (Page 56)	Hatz 1B20

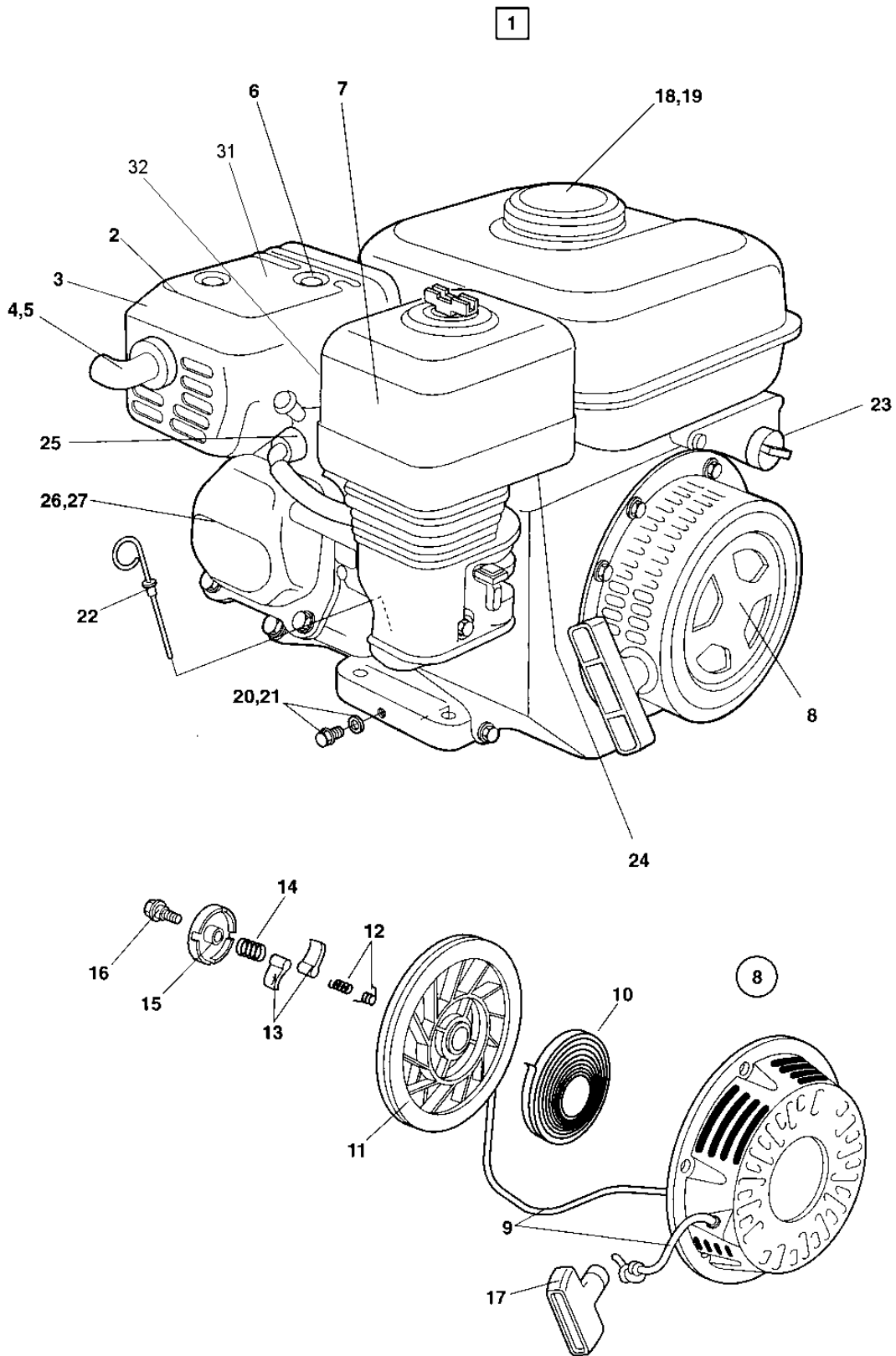


Engine installation

Item	Part No	Rem Qty	Description	Code
1		1	Engine (Page 48)	Honda GX160K1SX
2	4700904734	4	Washer	8,4x26x4
3	4700393903	4	Washer	
4	4700500508	4	Screw	
5	4700902286	4	Lock nut	M8
6	4700396126	1	Stiffener	
7	4700792774	1	Blind rivet	
8	4700902041	1	Screw	
9	4700904734	1	Washer	8,4x26x4
10	4700391706	1	Centrifugal clutch	

Engine Honda GX160K1SX

18619



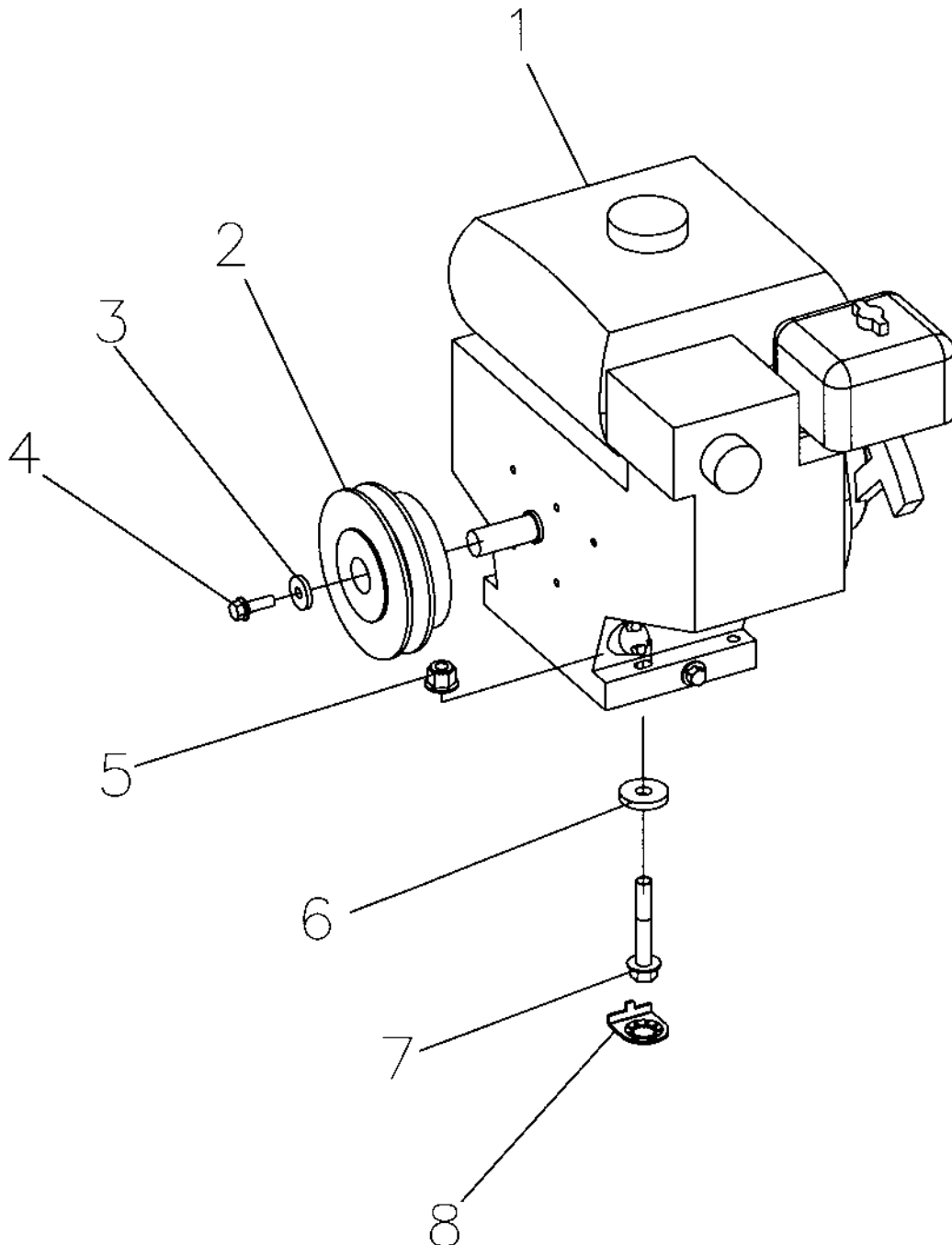
Engine Honda GX160K1SX

Item	Part No	Rem	Qty	Description	Code
1	4700281125		1	Petrol engine	
2	4700239059		1	.Muffler	
3	4700239060		1	.Muffler cover, upper	
4	4700239062		1	.Exhaust pipe	
5	4700238322		1	.Arrester, spark	
6	4700239063		1	.Gasket, muffler	
7	4700239323		1	.Air filter, cpl	A
8	4700239065		1	.Recoil starter, cpl	D
9	4700239374		1	..Starter rope	B
10	4700239375		1	..Spring	B
11	4700239376		1	..Reel	
12	4700239377		2	..Spring	
13	4700239378		2	..Ratchet	
14	4700239379		1	..Friction spring	
15	4700239380		1	..Guide	
16	4700239381		1	..Screw	
17	4700239391		1	..Handle	B
18	4700239321		1	.Fuel tank	
19	4700239324		1	.Fuel tank cap	D
20	4700238302		2	.Oil plug	D
21	4700238303		2	.Gasket	D
22	4700238306		1	.Oil plug	D
23	4700239067		1	.Oil alert	
24	4700239325		1	.Carburettor	
25	4700924842		1	.Spark plug	
26	4700238301		1	.Gasket	D
27	4700239664		1	.Gasket, cylinder head	D
32	4700573002	D	1	Nut	M5

D) Locking nut for revolution screw

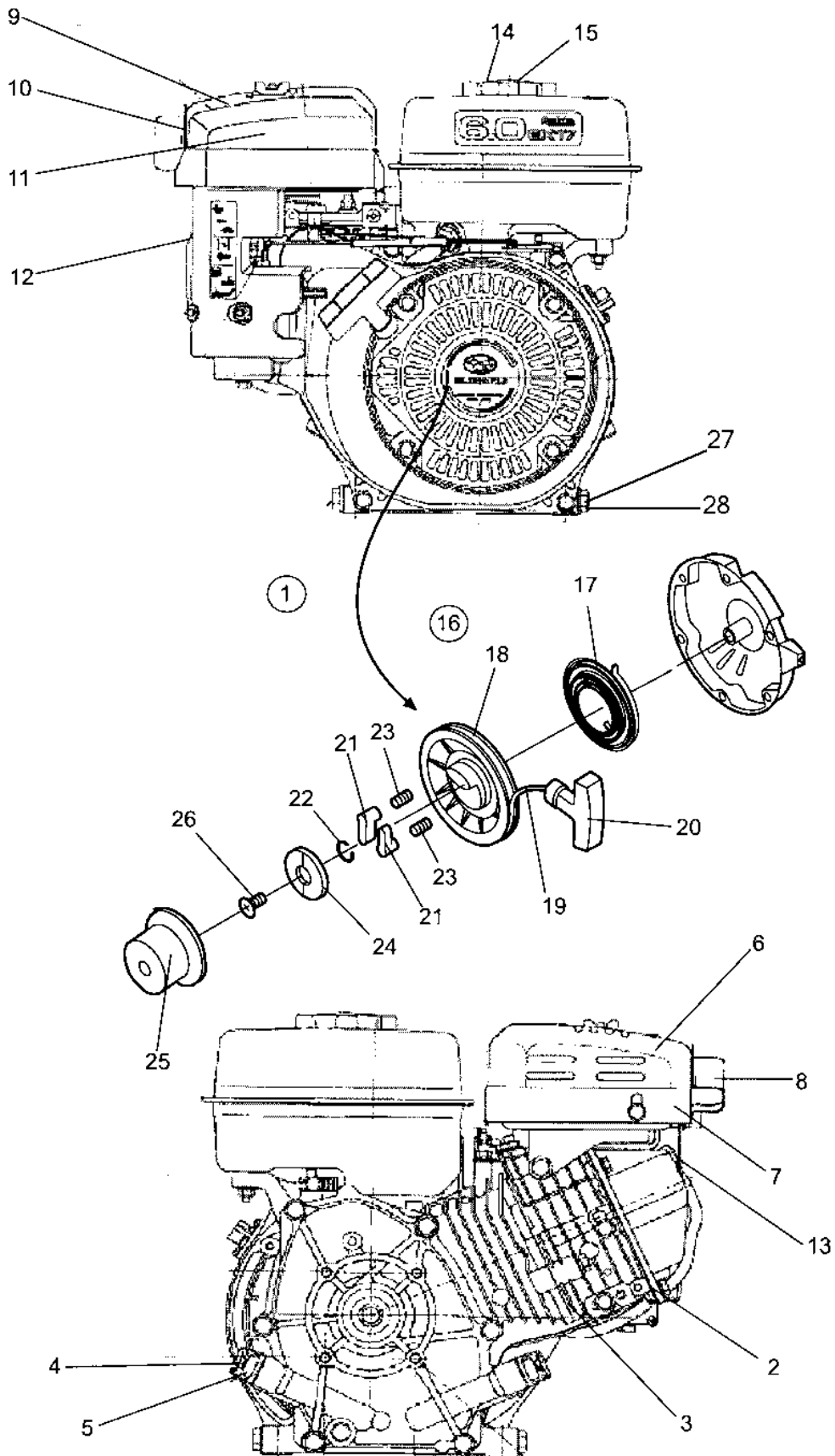
Engine installation Robin

18866



Engine installation Robin

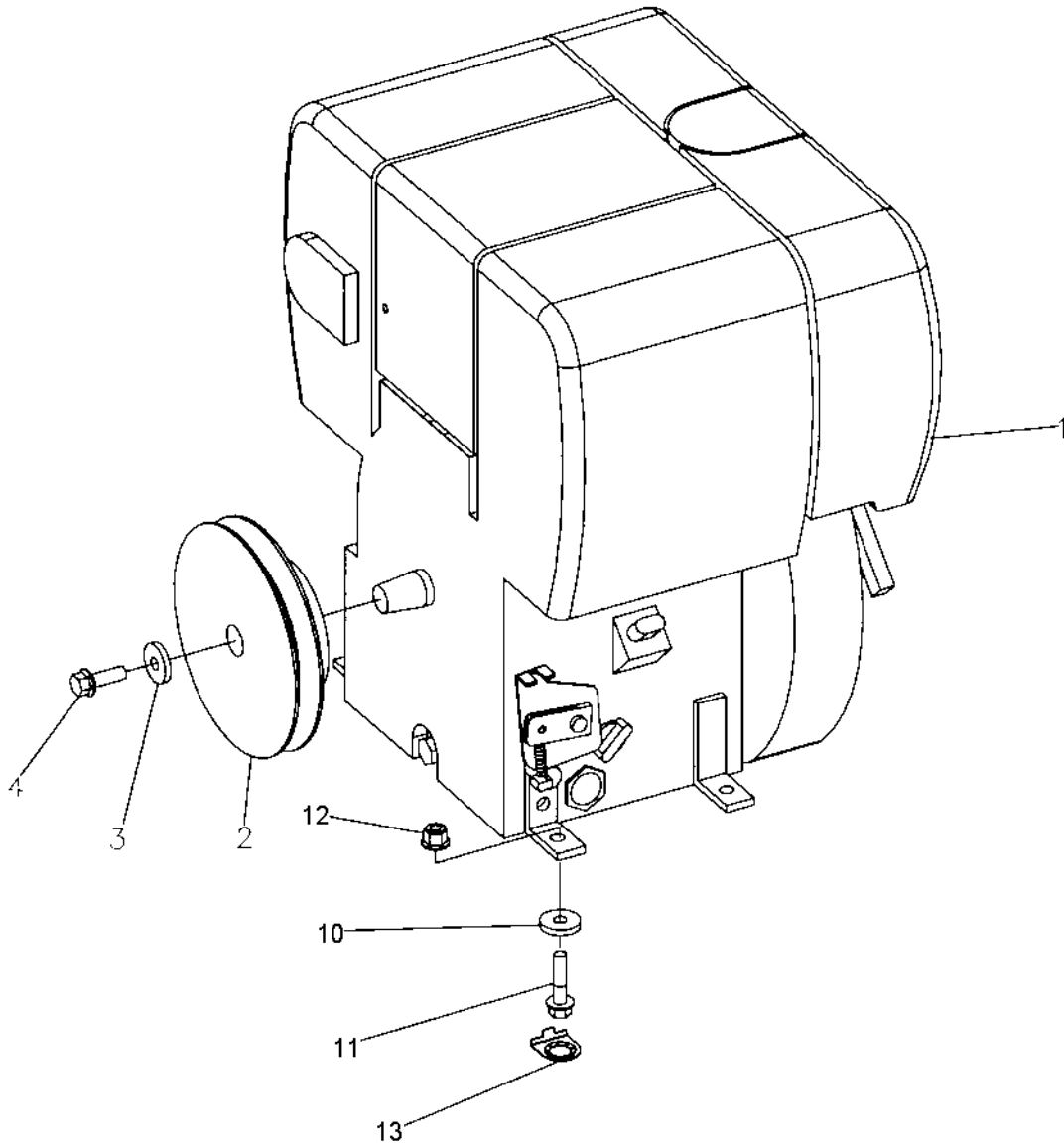
Item	Part No	Rem Qty	Description	Code
1		1	Engine (Page 52)	Robin EX17
2	4700391706		Centrifugal clutch	
3	4700904734	1	Washer	8,4x26x4
4	4700902041	1	Screw	
5	4700902286	4	Lock nut	M8
6	4700904734	4	Washer	8,4x26x4
7	4700500508	4	Screw	
8	4700393903	4	Washer	



Item	Part No	Rem Qty	Description	Code
1	4700396168	1	Engine, cpl	
2	4700950535	1	.Valve cover gasket	
3	4700950536	1	.Cylinder head gasket	
4	4700950537	1	.Oil dipstick	
5	4700910267	1	.O-ring	
6	4700950538	1	.Muffler	
7	4700950539	1	.Cover	
8	4700950540	1	.Deflector	
9	4700950541	1	.Air cleaner, cpl	
10	4700950542	1	.Air filter element	
11	4700950543	1	.Gasket	
12	4700950544	1	.Carburetor	
13	4700950545	1	.Spark plug	
14	4700950546	1	.Filler cap	
15	4700950547	1	.Strainer	
16	4700950548	1	.Recoil starter, cpl	
17	4700950549	1	..Spring	
18	4700950550	1	..Reel	
19	4700950551	1	..Starter rope	
20	4700950436	1	..Handle	
21	4700950437	2	..Ratchet	
22	4700239711	1	..Spring	
23	4700239712	2	..Spring	B
24	4700950439	1	..Guide	
25	4700950552	1	..Holder	
26	4700239715	1	..Screw	
27	4700910268	1	.Oil plug	
28	4700910266	1	.Gasket	

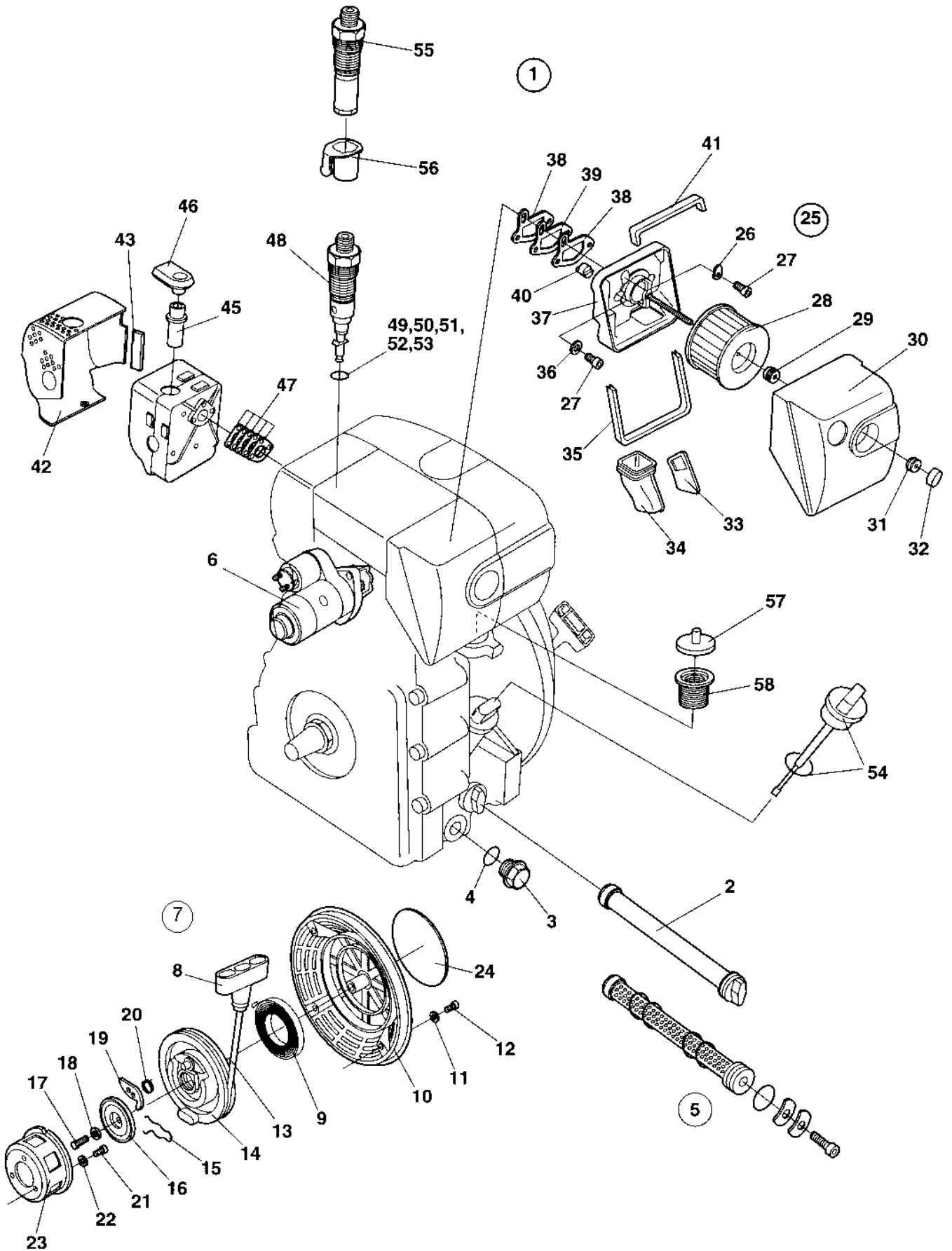
Engine installation Hatz

18632-1



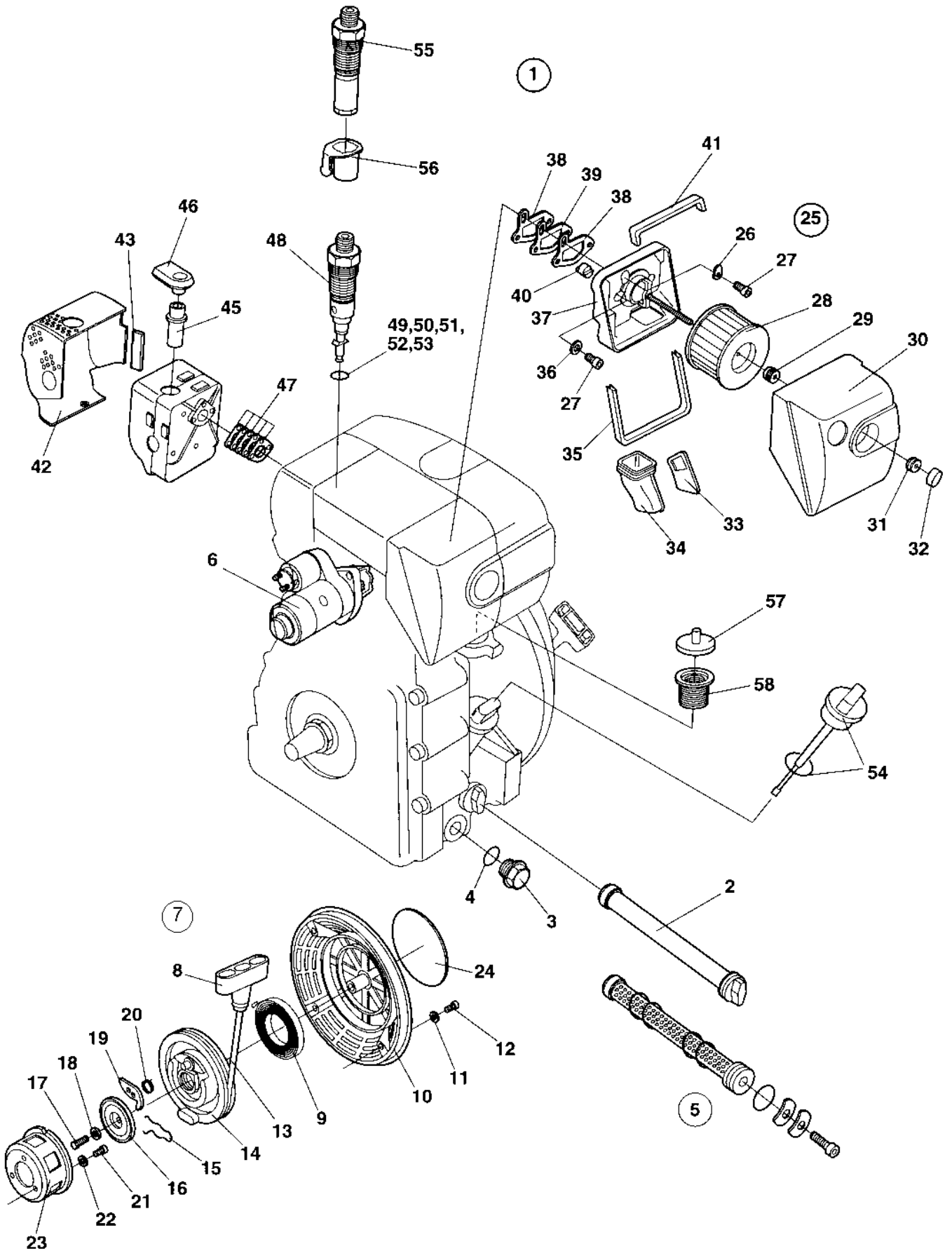
Engine installation Hatz

Item	Part No	Rem Qty	Description	Code
1		1	Engine (Page 56)	Hatz 1B20
2	4700391705	1	Clutch	
3	4700904640	1	Washer	8,4x22x3
4	4700902041	1	Screw	
10	4700904734	4	Washer	8,4x26x4
11	4700902147	4	Screw	
12	4700902286	4	Lock nut	M8
13	4700393903	4	Washer	



Item	Part No	Rem	Qty	Description	Code
1	4700379094		1	Engine, cpl	Hatz !B20
2		C	1	Oil strainer, cpl	
3	4700938124		1	.Oil drain valve	D
4	4700937003		1	.O-ring	B
5	4700937001		1	.Oil strainer, cpl	
6	4700936974		1	.Starter	
7	4700936982		1	.Recoil starter, cpl	D
8	4700936983		1	..Knob	B
9	4700936985		1	..Spiral spring	B
10	4700936986		1	..Housing	
11	4700936987		4	..Washer	
12	4700936988		4	..Screw	
13	4700936989		1	..Rope	B
14	4700936990		1	..Reel	
15	4700936991		1	..Spring	B
16	4700936992		1	..Friction plate	
17	4700936993		1	..Screw	
18	4700936994		1	..Washer	
19	4700936995		1	..Ratchet	
20	4700936996		1	..O-ring	
21	4700936997		3	.Screw	
22	4700936998		3	.Washer	
23	4700936999		1	.Starter pulley	
24	4700937000		1	.Decal	
25	4700938135		1	.Air cleaner, cpl	
26	4700937011		1	..Washer	
27	4700937012		3	..Screw	
28	4700937013		1	..Filter element	A
29	4700937014		1	..Nut	
30	4700937015		1	..Protecting cover	
31	4700937016		1	..Rubber sleeve	
32	4700937017		1	..Nut	
33	4700937018		1	..Plate	
34	4700937019		1	..Rubber hose	
35	4700937020		1	..Edge trim	
36	4700936910		2	..Washer	
37	4700937021		1	..Air filter house	
38	4700937022		2	..Gasket	
39	4700937023		1	..Gasket	
40	4700937024		1	..Vent nipple	
41	4700937010		1	..Edge trim	
42	4700937007		1	.Protecting cover	
43	4700937008		1	..Edge trim	
44	4700937009		1	.Muffler	
45	4700937005	A	1	..Exhaust tube	
		B	1	..Exhaust pipe	
46	4700937004		1	..Exhaust pipe	
47	4700937006		5	..Gasket	
48	4700936976		1	.Injection pump cpl	D
49	4700936977		1	..O-ring	0,2 mm
50	4700936978		1	..O-ring	0,3 mm
51	4700936979		1	..O-ring	0,4 mm
52	4700936980		1	..O-ring	0,5 mm
53	4700936981		1	..O-ring	0,6 mm
54	4700937608		1	.Oil dipstick	
55	4700937607		1	.Nozzle	
56	4700937606		1	.Sleeve	

- A) Old version
- B) New version
- C) Old version replaced by item 5



Engine Hatz 1B20

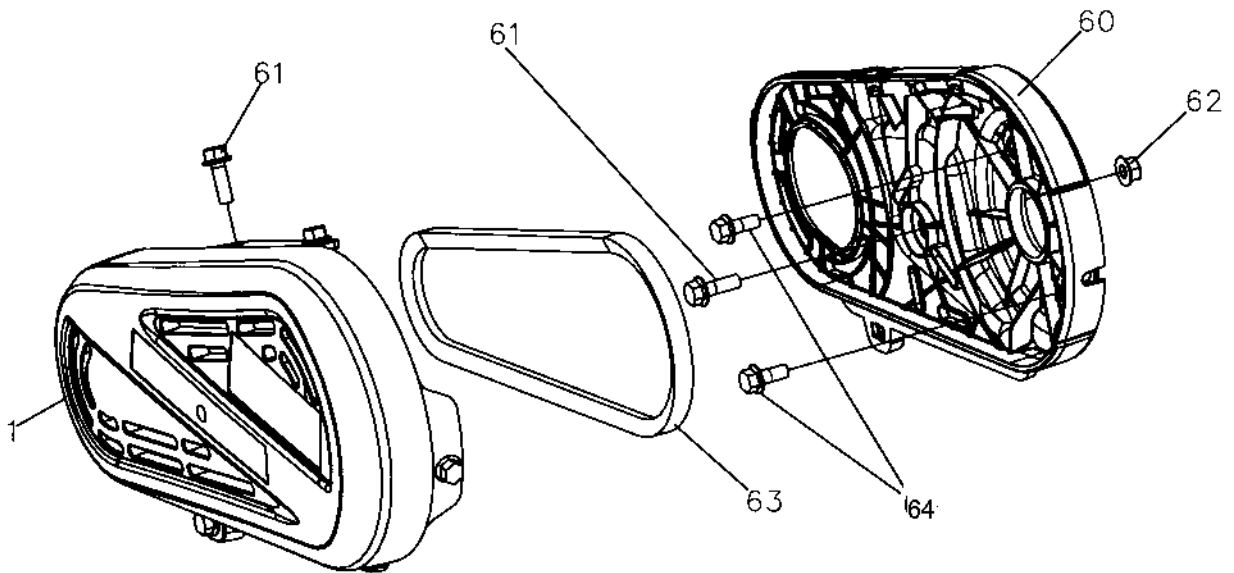
Item	Part No	Rem Qty	Description	Code
57	4700937604	1	.Lock	
58	4700937605	1	.Socket	
59	4700937904	1	.Speed control, cpl	

Power transmission

Item	Part No	Rem Qty	Description	Code
10		1	Transmission cover Honda, Robin (Page 62)	
20		1	Transmission cover (Page 64)	Hatz

Transmission cover Honda, Robin

18604-1

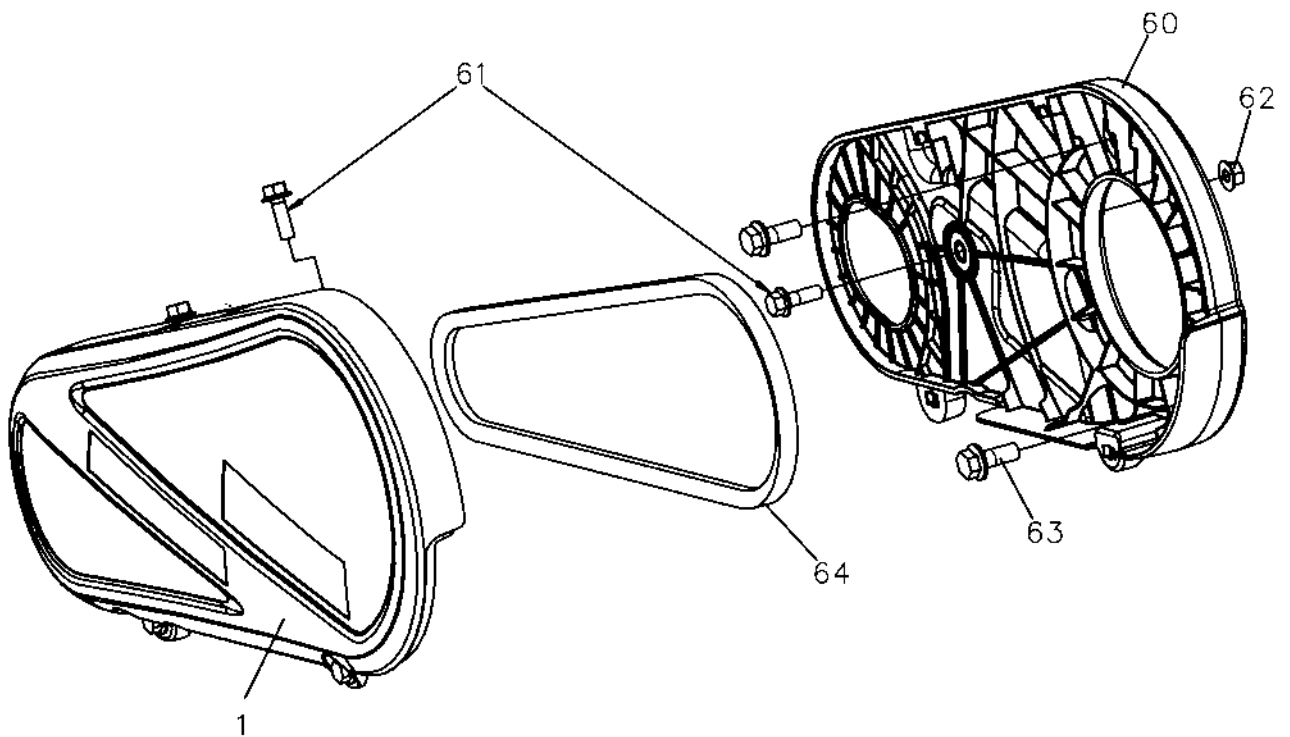


Transmission cover Honda, Robin

Item	Part No	Rem Qty	Description	Code
1	D392862-02	1	V-belt guard, outer	
60	4700393325	1	Belt guard, inner	
61	4700902041	7	Screw	
62	4700570102	1	Nut	M8
63	4700395658	1	V-belt	

Transmission cover Hatz

18630-1



Transmission cover Hatz

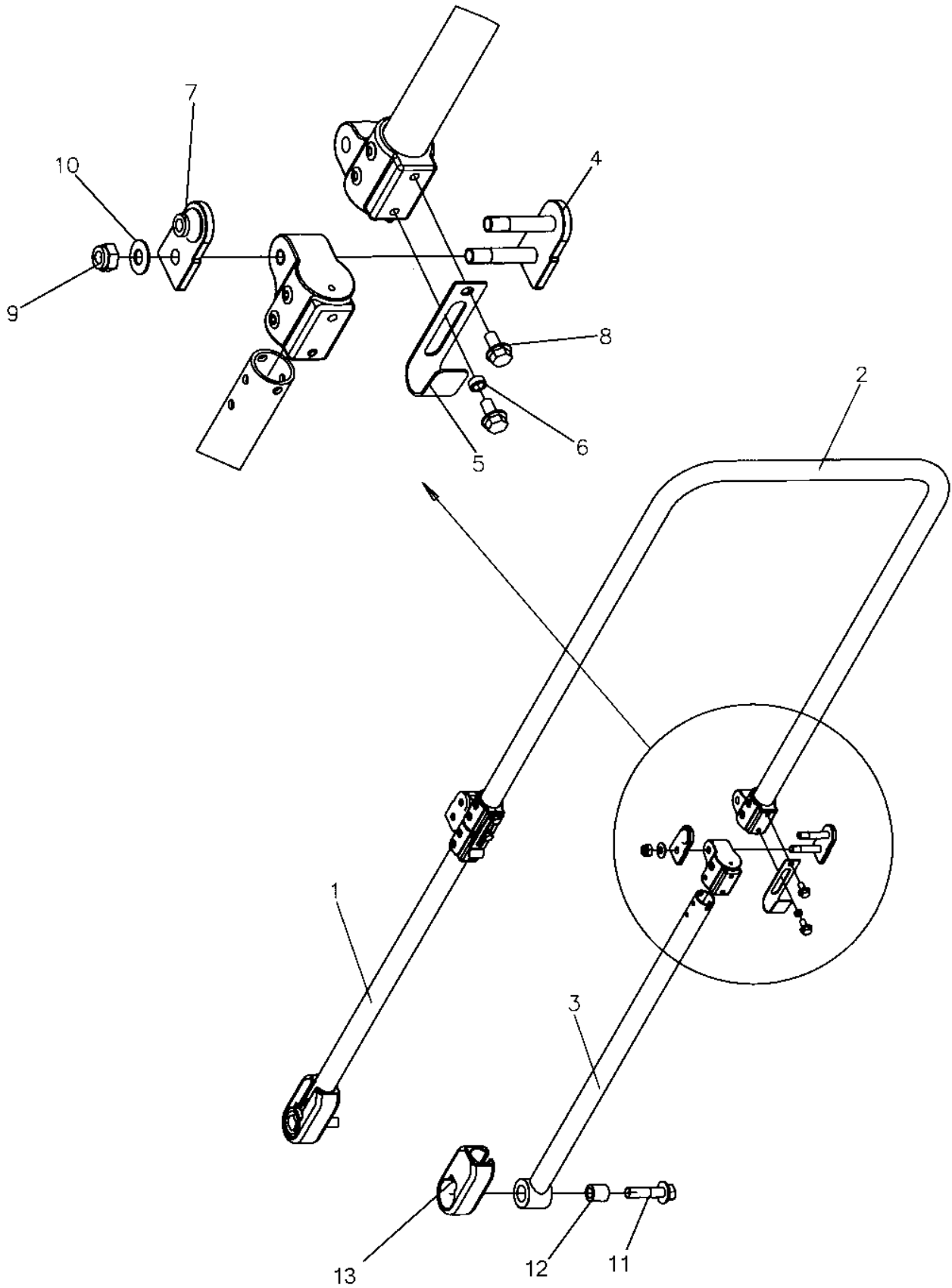
Item	Part No	Rem Qty	Description	Code
1	D393842-02	1	Belt guard, outer	
60	4700393841	1	Belt guard, inner	
61	4700902041	5	Screw	
62	4700570102	1	Nut	M8
63	4700500509	2	Screw	
64	4700395659	1	V-belt	

Handle

Item	Part No	Rem Qty	Description	Code
10		1	Handle (Page 68)	Standard
20		1	Vibration damped handle (Page 70)	Option

Handle Standard

18612-2

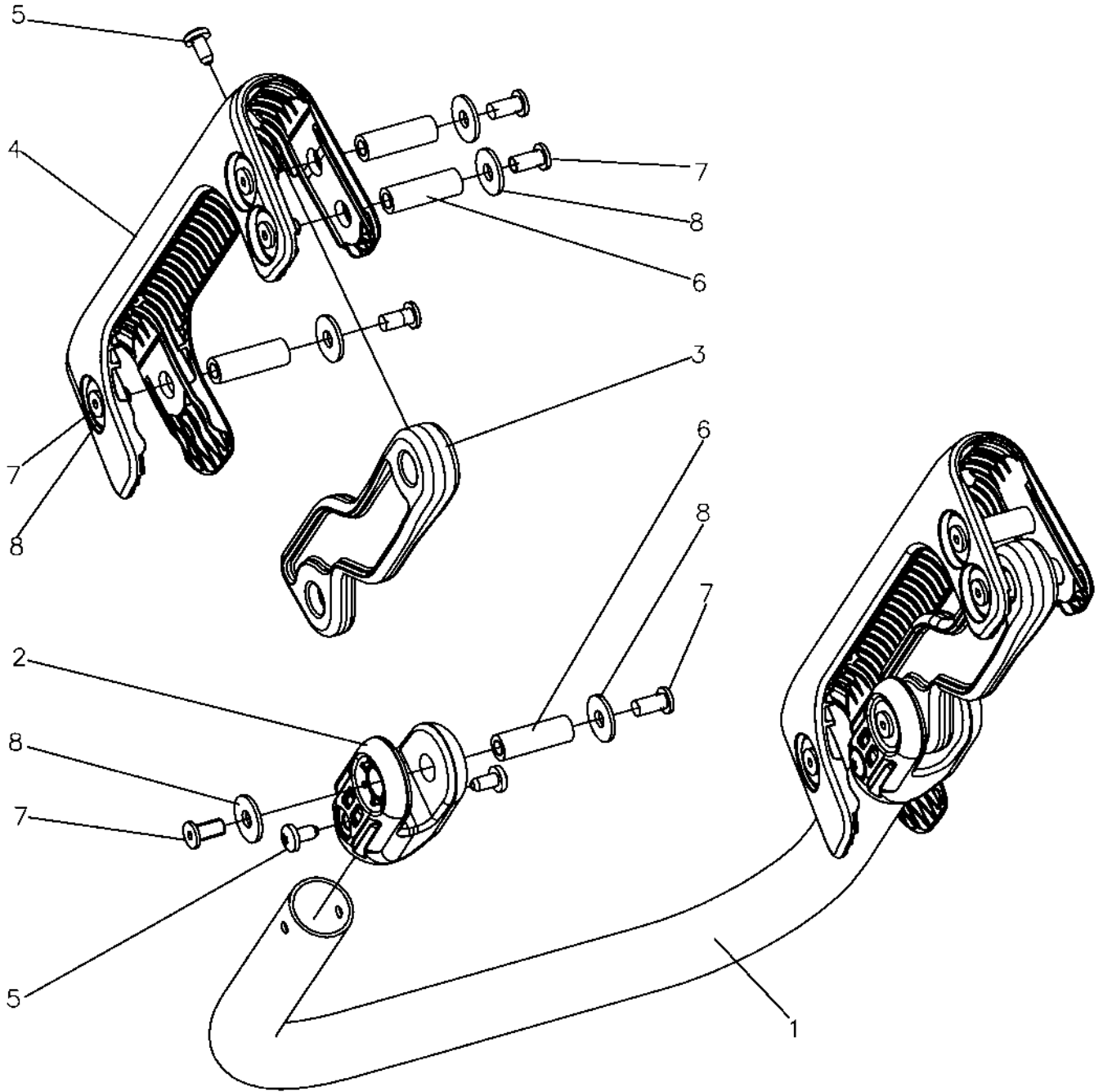


Handle Standard

Item	Part No	Rem Qty	Description	Code
1	D396311-03	1	Handle, lower part	
2	D396312-03	1	Handle, lower part	
3	D396313-03	1	Handle, upper part	
4	4700393220	2	Link	
5	4700394029	2	Cover	
6	4700394145	2	Spacer sleeve	
7	4700394228	2	Washer	
8	4700541702	4	Screw	M6x12
9	4700791182	4	Lock nut	M8
10	4700792497	4	Disc spring	
11	4700901928	2	Screw	
12	4700391821	2	Sleeve bearing	
13	4700391822	2	Shock absorber	

Vibration damped handle Option

18598-1



Vibration damped handle Option

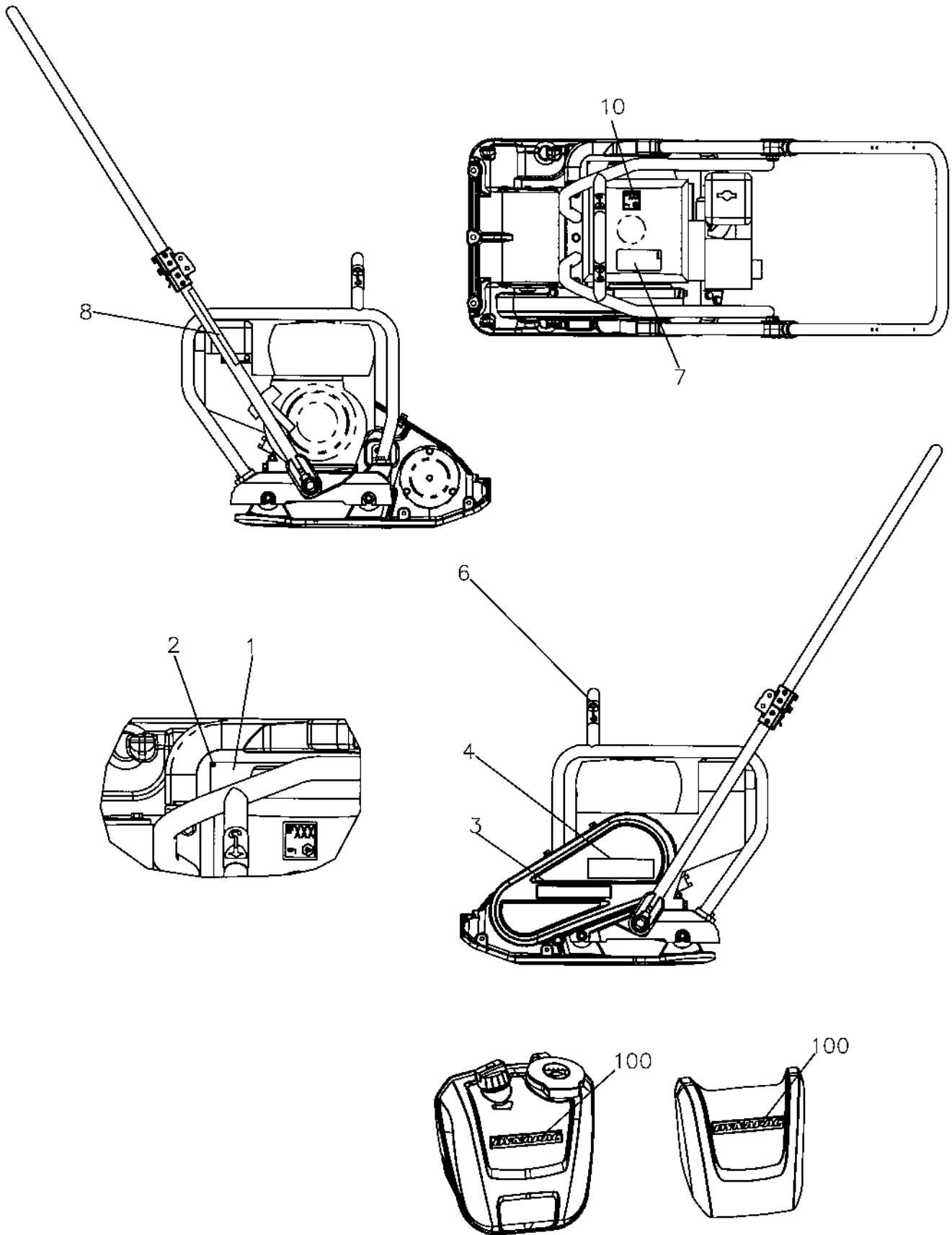
Item	Part No	Rem Qty	Description	Code
1	4700391826	1	Handle	
2	4700393079	2	Bracket	
3	4700391824	2	Shock absorber	
4	4700393078	2	Bracket	
5	4700792496	8	Screw	
6	4700792406	8	Screw	
7	4700792784	16	Screw	
8	4700792783	16	Washer	

Decals and documentation

Item	Part No	Rem Qty	Description	Code
10		1	Decals and documentation (Page 74)	

Decals and documentation

18755



Decals and documentation

Item	Part No	Rem Qty	Description	Code
1		1	Sign plate	
2	4700527001	4	Screw	
3	4700393622	1	Decal "DYNAPAC"	
4	4700397431	1	Decal "MODEL CODE"	
6	4700281269	2	Decal "LIFT"	
7	4700394708	1	Assembly decal	
8	4700394704	1	Decal	
10	4700791293	1	Decal "Sound power level"	105dB
12			Documentation	
		1	Instruction book, engine	
		1	Spare parts catalogue	
		1	Instruction manual	
100	4700393622	1	Decal "DYNAPAC"	

NUMERICAL INDEX

Part Number	Page	Part Number	Page	Part Number	Page
4700163105	43	4700395013	43	4700936910	57
4700238301	49	4700395018	19	4700936974	57
4700238302	49	4700395020	19	4700936976	57
4700238303	49	4700395658	63	4700936977	57
4700238306	49	4700395659	65	4700936978	57
4700238322	49	4700396126	47	4700936979	57
4700239059	49	4700396168	53	4700936980	57
4700239060	49	4700396177	31	4700936981	57
4700239062	49	4700396180	31	4700936982	57
4700239063	49	4700396194	35	4700936983	57
4700239065	49	4700396548	43	4700936985	57
4700239067	49	4700396549	41	4700936986	57
4700239321	49	4700397431	75	4700936987	57
4700239323	49	4700397510	39	4700936988	57
4700239324	49	4700500013	31	4700936989	57
4700239325	49	4700500018	27	4700936990	57
4700239374	49	4700500021	31	4700936991	57
4700239375	49	4700500024	31	4700936992	57
4700239376	49	4700500026	33	4700936993	57
4700239377	49	4700500067	31	4700936994	57
4700239378	49	4700500096	33	4700936995	57
4700239379	49	4700500503	27	4700936996	57
4700239380	49	4700500505	19,25	4700936997	57
4700239381	49	4700500506	25,27	4700936998	57
4700239391	49	4700500508	29,47,51	4700936999	57
4700239664	49	4700500509	65	4700937000	57
4700239711	53	4700527001	75	4700937001	57
4700239712	53	4700541702	69	4700937003	57
4700239715	53	4700570102	33,63,65	4700937004	57
4700281125	49	4700570103	13	4700937005	57
4700281269	15,17,75	4700573002	49	4700937006	57
4700282373	13	4700601003	27,31	4700937007	57
4700379094	57	4700615103	35	4700937008	57
4700383582	27	4700791182	31,69	4700937009	57
4700391705	55	4700791293	75	4700937010	57
4700391706	47,51	4700792119	41,43	4700937011	57
4700391821	69	4700792406	71	4700937012	57
4700391822	69	4700792496	71	4700937013	57
4700391824	71	4700792497	69	4700937014	57
4700391826	71	4700792711	39	4700937015	57
4700392073	31	4700792725	9	4700937016	57
4700392092	31	4700792774	47	4700937017	57
4700393020	31	4700792783	71	4700937018	57
4700393078	71	4700792784	71	4700937019	57
4700393079	71	4700792804	31	4700937020	57
4700393220	69	4700901928	69	4700937021	57
4700393325	63	4700902041	15,17,21,23,35	4700937022	57
4700393381	31		43,47,51,55,63	4700937023	57
4700393622	75		65	4700937024	57
4700393841	65	4700902147	55	4700937604	57
4700393903	47,51,55	4700902285	27	4700937605	59
4700393987	27	4700902286	27,31,35,47,51	4700937606	57
4700393989	27		55	4700937607	57
4700393990	27	4700904229	31	4700937608	57
4700394029	69	4700904556	33	4700937904	59
4700394046	33	4700904640	43,55	4700938124	57
4700394047	33	4700904734	47,51,55	4700938135	57
4700394103	27	4700910266	53	4700950436	53
4700394145	69	4700910267	53	4700950437	53
4700394228	69	4700910268	53	4700950439	53
4700394704	75	4700924842	49	4700950535	53
4700394708	75	4700928381	31	4700950536	53

NUMERICAL INDEX

Part Number	Page	Part Number	Page	Part Number	Page
4700950537	53				
4700950538	53				
4700950539	53				
4700950540	53				
4700950541	53				
4700950542	53				
4700950543	53				
4700950544	53				
4700950545	53				
4700950546	53				
4700950547	53				
4700950548	53				
4700950549	53				
4700950550	53				
4700950551	53				
4700950552	53				
4812070085	29				
D392214-03	39				
D392815-02	31				
D392862-02	63				
D392920-03	15				
D393040-02	7				
D393041-02	7				
D393458-01	11				
D393483-03	17				
D393823-01	9				
D393842-02	65				
D396311-03	69				
D396312-03	69				
D396313-03	69				
D396963-03	21				
D396964-03	23				